



# GEF's Approach towards Sustainable Aquaculture in Africa and beyond

**Dr. Peter Umunay**

**Food System Programs Lead**

Email: [pumunay@thegef.org](mailto:pumunay@thegef.org)

# A GLOBAL PARTNERSHIP

Largest environmental multi-donor trust fund in the world

Financial mechanism of five international environmental conventions



## 18 IMPLEMENTING AGENCIES



# GEF-8: HEALTHY PLANET, HEALTHY PEOPLE

*Unified action towards 2030 Goals and Commitments*

## FOCAL AREAS

Biodiversity

Climate change mitigation

Land degradation

International waters

Chemicals and waste

## INTEGRATED PROGRAMS

Food Systems

Ecosystem Restoration

Sustainable Cities

Amazon, Congo, and Critical Forest Biomes

Circular Solutions to Plastic Pollution

Blue and Green Islands

Clean and Healthy Ocean

Greening Transportation Infrastructure Development

Net-Zero Nature-Positive Accelerator

Wildlife Conservation for Development

Elimination of Harmful Chemicals from Supply Chains

## GLOBAL PROGRAMS

Mobilizing the Financial Sector for Environmental Goals through Blended Finance

Community Action for Global Transformation - Small Grants Program and Beyond

## CROSS-CUTTING

Circular economy • Nature-based solutions • Gender responsiveness • Resilience • Private sector engagement

## Unsustainable aquaculture expansion has resulted in

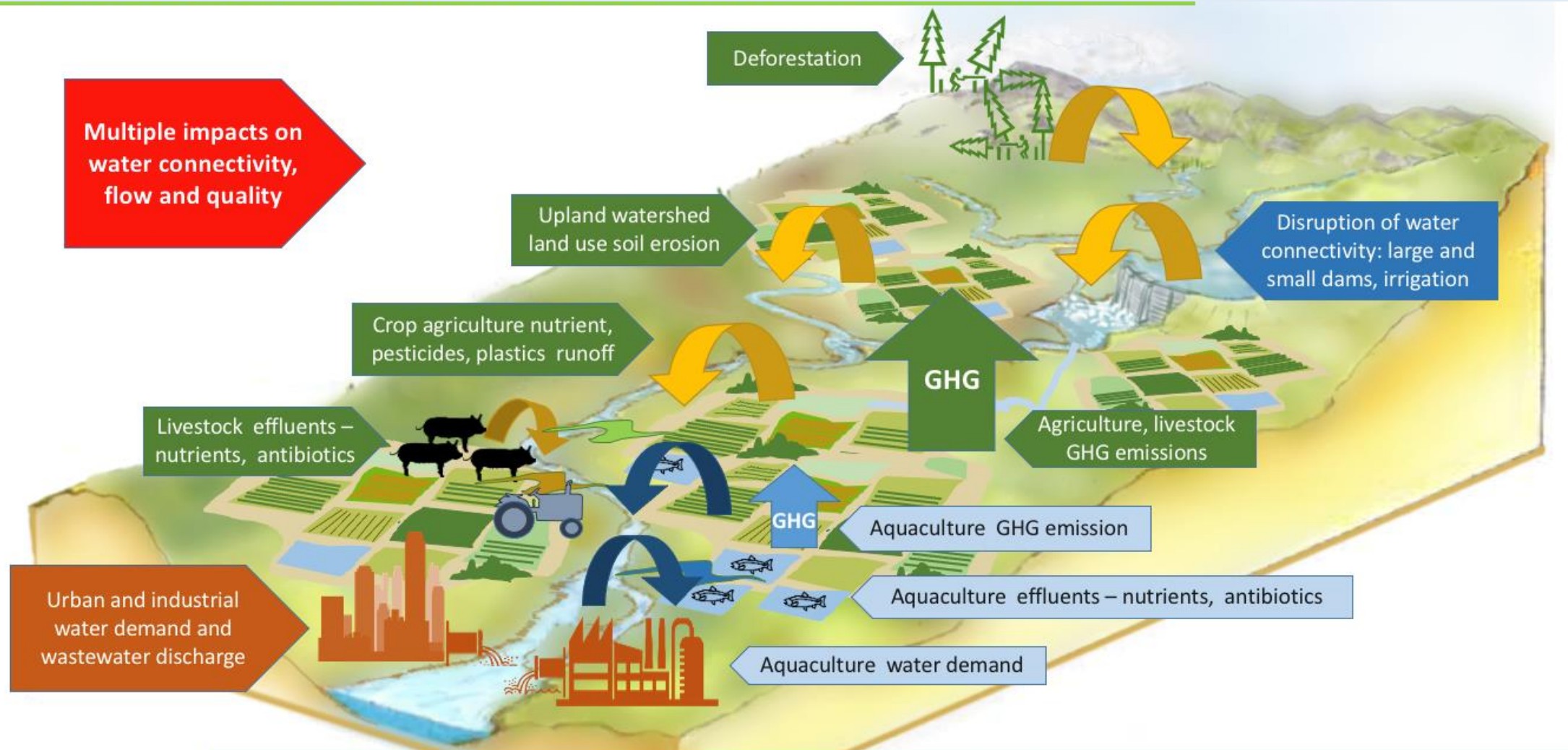
- Disease risks
- Biodiversity (Invasive species etc.)
- Conversion of ecologically sensitive land
- Water pollution which runs off into aquatic ecosystems and coastal areas,
- Continued dependencies on wild-caught fish

## Increased negative impacts in food systems

- Post-harvest losses and low product quality; lack of efficient value chains and access to lucrative markets; High levels of food loss and waste
- A rising global population and changes in consumption patterns towards higher protein diets
- Limited access of small-scale producers and aqua-enterprises to finance and viable markets
- Lack of economically viable fishmeal alternatives and diversified marketing strategies



# Aquaculture should be viewed as one element of complex land/waterscapes



Flow modification, multiple sources of unmitigated pollution, eutrophication & sediments impact water quantity and quality for aquaculture and fisheries and impact aquatic biodiversity

# The evolution of GEF's Aquaculture Investments

## ✓ The GEF Biodiversity Focal Area:

- To date only limited investments across mostly policy focused activities and with no dedicated aquaculture entry-points in the GEF-8 Biodiversity Strategy

## ✓ The International Waters Focal Area:

- Up until GEF-7, the IW Focal Area did not have a designated aquaculture entry-point and investments focused mainly on support for sector standard setting, along with limited support for sustainable livelihoods
- In GEF-7, the IW Focal Area created a strategic entry point targeting marine aquaculture and innovative production of marine algae, while also investing in sustainably fishmeal value chains.

# GEF-8: a more focused approach to Aquaculture Investments

In GEF-8, spanning the period 2022-2026, GEF has created a series of targeted aquaculture entry-points:

- ❖ **The Food Systems Integrated Program:** focused on catalyzing a transformation to sustainable food systems that are nature-positive, resilient, and pollution-reduced
- ❖ **The International Waters Focal Area** and its objective. 1: “Accelerate joint action to support a sustainable blue economy”.





**FOOD SYSTEMS**  
Integrated Program



*To catalyze the transformation to sustainable food systems that are **nature positive, resilient, and pollution-reduced***

*Reduce environmental degradation and negative externalities in food production systems and on the demand side across supply chains*

---

Priorities and Focus for Transformative Change

LIVESTOCK  
SYSTEMS

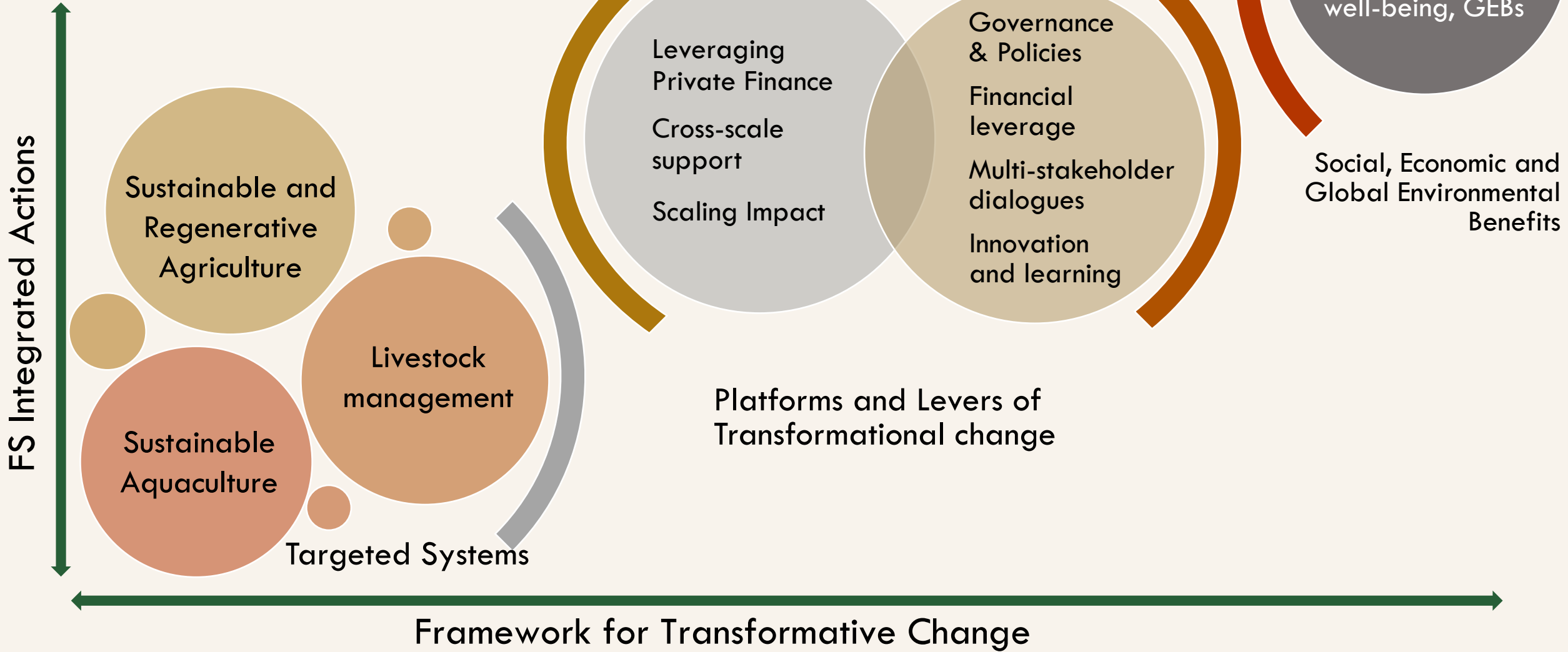
SUSTAINABLE &  
REGENERATIVE AGRICULTURE

AQUACULTURE

CONTRIBUTIONS TO MEAS

major contributions to all 3 Rio Conventions and the IW FA GEBs





# LEVERS TO INFLUENCE SYSTEMS TRANSFORMATION

## Governance and Policies

(strategic pathways  
at national level)



## Financial Leverage

(including important  
engagement of the  
private sector,  
de-risking strategies)



## Multistakeholder Dialogues

(including  
commodities/crops  
platforms at global  
and regional levels)

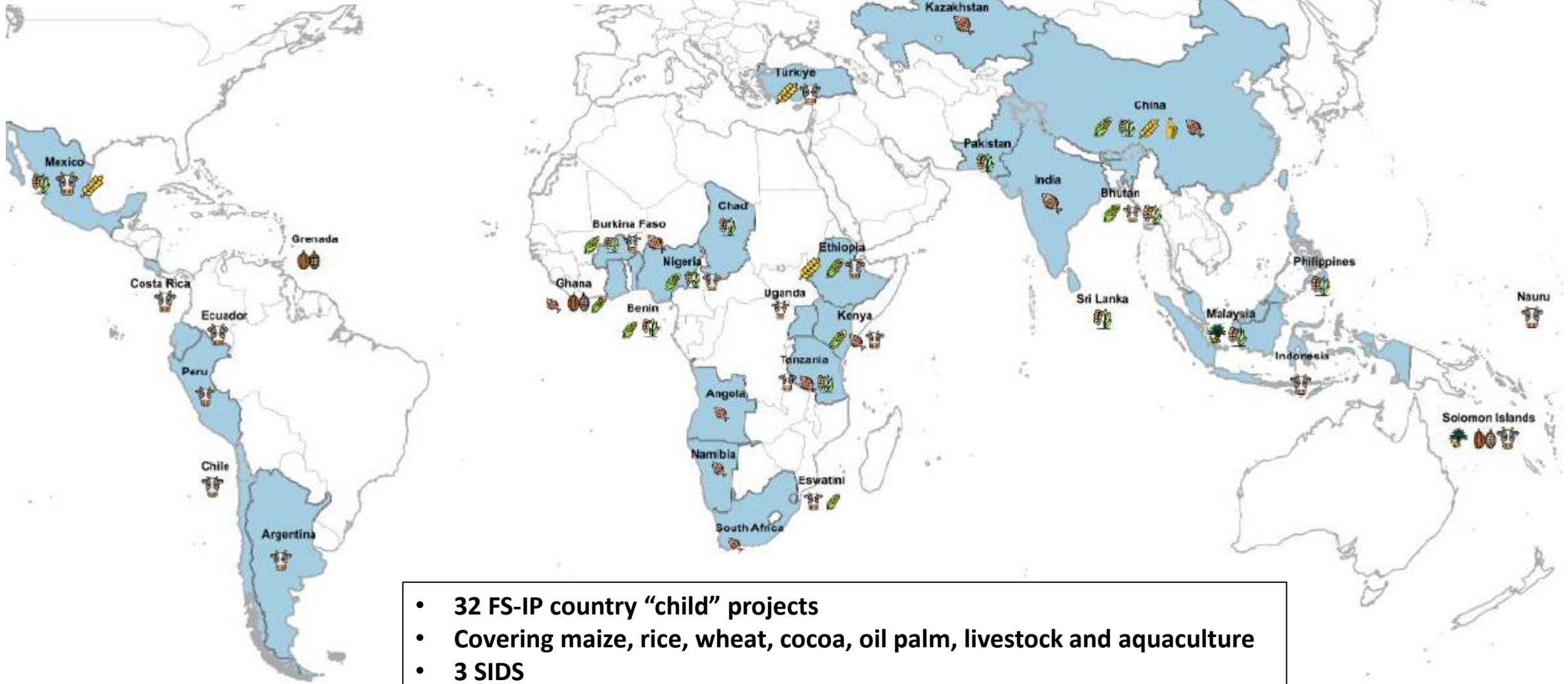


## Innovation

(agri/aquaculture  
practices,  
sustainable value  
chains, markets)



# The FS-IP countries



Description: GEF 8 Food Systems Integrated Program (FS-IP)  
Projection: EPSG:4326 - WGS 84 - Geographic. Sources: GAUL, Flatiron.  
Author: Carmen Morales, Land Monitoring and Climate Specialist, FAO.  
The boundaries and names shown and the designations used on this map do not imply the expression of any opinion whatsoever on the part of FAO concerning the legal status of any country, territory, city or area or of its authorities, or concerning the delimitation of its frontiers and boundaries.

#### IP's Legend

GEF 8 FS-IP

#### Target Sectors Legend

Coffee Cocoa Corn Rice Soy Wheat Palm Livestock Aquaculture

