

Length 15 5/8 inches



Depth 7 1/2 inches

**16' x 16' COVERAGE**

Independently tested to provide effective fire suppression in at least a 16'x16' area.

**ONE YEAR WARRANTY**

\$5 Million Certificate of Liability

**135°F HEAT ACTIVATED**

The heat activated trigger means the Guardian Fire Shield™ will not discharge in the presence of smoke. It must be extremely hot (i.e. a real fire) in order for the unit to automatically discharge.

**10 YEAR PROTECTION**

Left alone, the Guardian Fire Shield™ can protect your loved ones and your valuables for 10 years (not including battery replacement for testing purposes).

**-45°C OPERATES UNDER EXTREME COLD**

Since cold temperatures don't affect performance, the Guardian Fire Shield™ is perfect for use in outbuildings of all kinds (no power is required either).

**APPROVED COMPONENTS**

Manufactured with certified components.

**EASY 5MIN INSTALLATION**

Installation couldn't be simpler. A 5/8 inch hole can be cut with a regular hand-held keyhole saw, and the Guardian Fire Shield™ slides easily into this hole between joists.

**EASY CLEAN UP**

The super-fine ABC dry-chem agent inside the Guardian Fire Shield™ cleans up easily with a vacuum in the event of a discharge.

**NO WATER DAMAGE**

Unlike water suppression, the dry-chem agent in the Guardian Fire Shield™ does no damage whatsoever when discharged.

**NON-TOXIC ENVIRONMENTALLY SAFE POWDER**

The dry-chem agent used in the Guardian Fire Shield™ is safe when discharged, as it is essentially a form of baking soda.

**\*UL & ULC Pending**

Underway with QAI

**PENDING:**

\*Audible Alarm  
\*\*Interconnected

**Lease-Financing for the Guardian Fire Shield™ commercial / industrial / recreational customers**

**Unit Weight:**  
7.4 lbs including 5 lbs Dry-chem.

**Unit Dimensions:**  
4 3/8" diameter tank,  
15 5/8" tall,  
7 1/2" deep at faceplate.

**Packaged Weight:**  
8.4 lbs

**Packaged Dimensions:**  
8 1/16" wide x 9 1/2" deep x 17 1/2" tall.

**Tank Pressure:**  
175 psi.

**Activation Temperature Rating:**  
135°F = 57°C.

**Effective Temperature Range:**  
-45°C (-49°F) to 57°C (135°F).

**Battery:**  
(for LED low-pressure indication)  
9V, included.

**Single Unit Tested Suppression Coverage:**  
(at 8' ceiling height)  
16' x 16' room = 256 sq.ft.

**Product Life Span:**  
10 years.

# Help Firefighters Help You!

## Install the Guardian Fire Shield™ automatic fire suppression safety device today!

*Your 24/7 Onsite Firefighter*

**PROBLEM:**

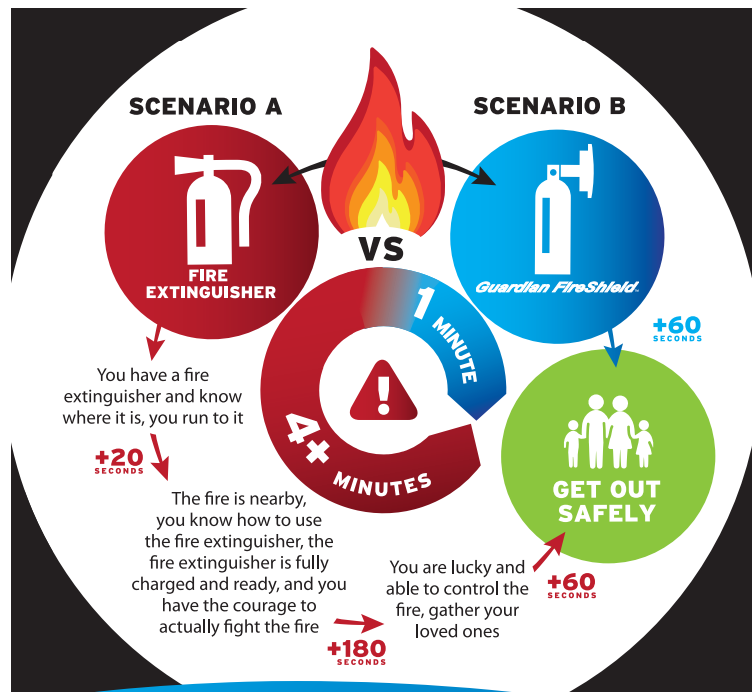
There isn't time. Modern materials and furnishings mean homes burn 8x faster and produce 200x more poisonous smoke than 30 years ago. Firefighters simply cannot respond in time.

**SOLUTION:**

The Guardian Fire Shield™. Fire safety hasn't changed much in 30 years, until now. The Guardian Fire Shield™ allows you and your family to get out safely, and gives firefighters the time they need to do their job.

## Guardian Fire Shield™

Automatic Fire Suppression Safety Device



**DESIGNED BY A  
FIRE FIGHTER  
TO SAVE LIVES.**



**“The Guardian Fire Shield™ frankly, is a brilliant product.”**

“The sheer genius of the **Guardian FireShield™** is its’ simplicity, this coupled with the fact that it is a truly effective and readily acquirable product for anyone in need of automated fire protection leaves no reason for it not to be included in an overall Fire Protection Plan. This is an extremely cost effective supplement to any other method of fire protection or as primary defense where none exists. I am proud to be involved in the development and distribution of the **Guardian FireShield™** devices.”

**Mel N. Mercier**

President, CloudHawk Security Corp.

- 30 Year Fire Services Veteran
- Recipient Fire Services Exemplary Service Medal
- Recipient Queen Elizabeth II Diamond Jubilee Medal
- British Columbia Director CVFSA, Past (Canadian Volunteer Fire Services Assoc.)



**Guardian Fire Shield™**  
Your In-Ceiling Fire Extinguisher

**1-888-909-6774**

info@cloudhawksecurity.com

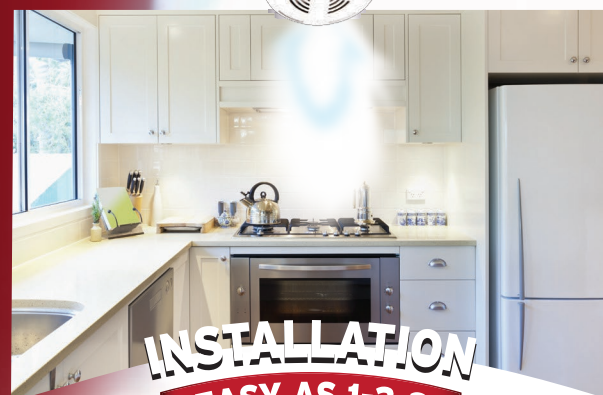
www.guardianfireshield.com

Cloud Hawk Security Corp.

999 Colonia Drive

Ladysmith, B.C. V9G 1N9

- ✓ **KITCHENS**
- ✓ **BEDROOMS**
- ✓ **HALLWAYS**
- ✓ **GARAGE**
- ✓ **COTTAGE**



**INSTALLATION  
EASY AS 1-2-3**

**1**

Find location in ceiling between joists

**2**

Trace 5 3/4" hole (template provided) and cut with drywall saw

**3**

Slide HAVEN into hole, turn 2 locking screws



**IT ONLY LOOKS LIKE A SMOKE DETECTOR  
- NOT SMOKE ACTIVATED!**

**AUTOMATIC  
FIRE  
SAFETY**

**WHEN EVERY SECOND COUNTS.**

**HEAT  
ACTIVATED**