



# Securing a living Amazon through Landscape Connectivity in Central Guyana

**Project objectives** To strengthen landscape connectivity through improved management of the Kanuku Mountains Protected Area and North Rupununi Wetlands in southern Guyana.

## Project sites

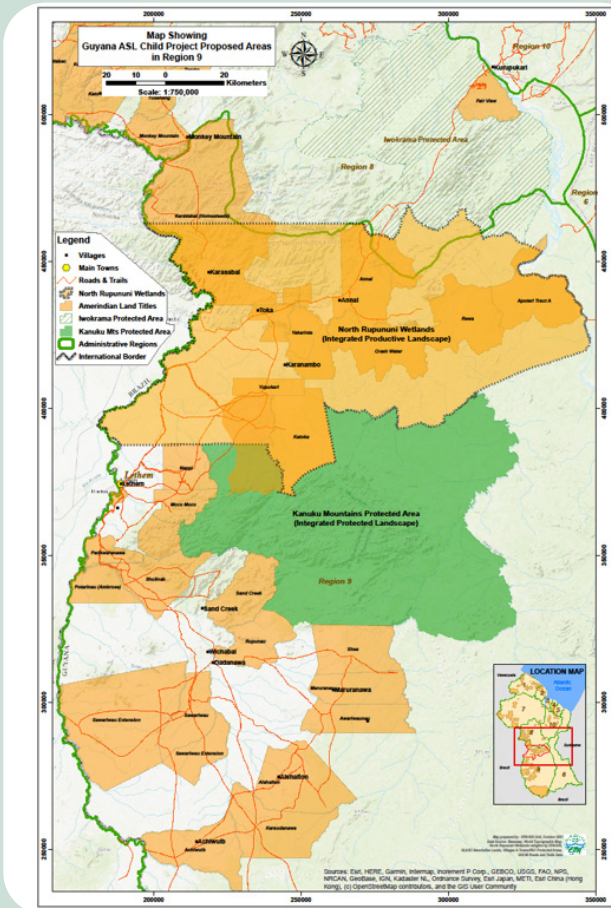
North Rupununi Wetlands (NRW) and the adjacent Kanuku Mountains Protected Area (KMPA).

## Expected outcomes

- Strengthened PAs management effectiveness.
- Increased areas of forests and watersheds brought under sustainable land and water management practices.
- Strengthened regulatory frameworks for natural resource conservation/sustainable use.
- Strengthened monitoring and evaluation system.

## GEF Indicators

- Terrestrial protected areas created or under improved management for conservation and sustainable use: 611,000 ha
- Area of landscapes under improved practices: 901,800 ha
- Greenhouse Gas Emissions Mitigated: 847,406 mtCO2e
- Direct Beneficiaries: 700 people (40% women)



## GEF grant for the project (US\$)

ASL2: \$5.30M

## Executing agency

Environmental Protection Agency (EPA)

## GEF agency

WWF

## Other partners

Protected Areas Commission and Guyana Forestry Commission

## Project coordinator

To be hired

