



# Moving from CDD basic service delivery to livelihoods/LED

Ashutosh Raina, Co-lead, Local Economic  
Development (LED) Knowledge Silo Breaker  
(KSB), World Bank

Email: [araina@worldbank.org](mailto:araina@worldbank.org)



# Presentation Overview

1. CDD LED Background
2. Evolution of CDD LED programs
3. Key lessons
4. Implication for Philippines CDD project

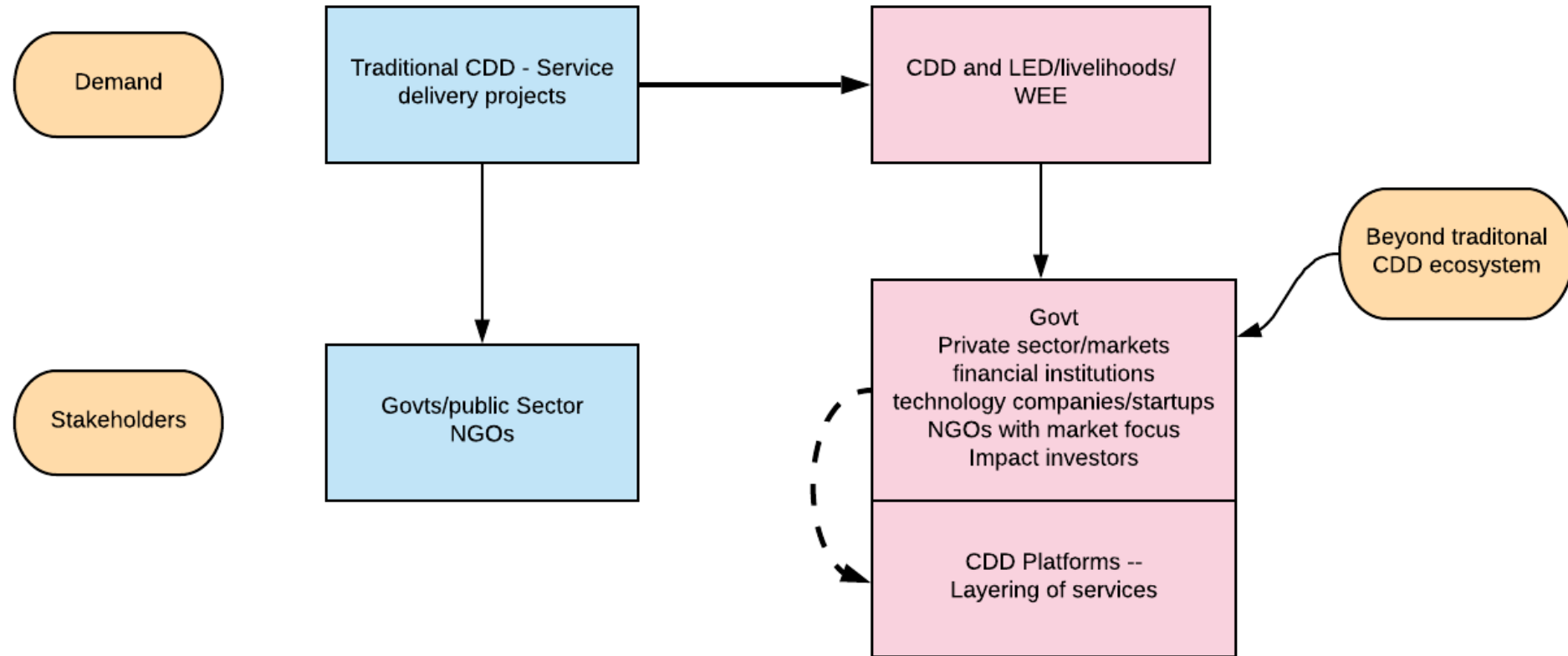




## 1. CDD LED Background

Governments are requesting assistance for job creation and livelihoods support

Trend: Move from CDD service delivery to livelihoods/LED



Need to look outwards beyond communities/governments/WB



## Defining LED

*“It is a process by which public, business and non-governmental sector partners work collectively to create better conditions for economic growth and employment generation”*

World Bank (2006)



# LED vs. Community Development Approaches

## LED

- Main focus is income generation & job creation
- Requires market based economic analysis of sectors and value chains with potential for the locality
- Requires dialogue with private sector to identify 1) constraints experienced, and 2) actions that could promote local value chains

## Community Development

- Often includes focus on social sectors e.g. education, health or small-scale infrastructure alone.
- Relies on community prioritization and needs based analyses
- Seeks to primarily involve excluded groups and the poor to identify needs





## 2. Evolution of CDD LED Projects?



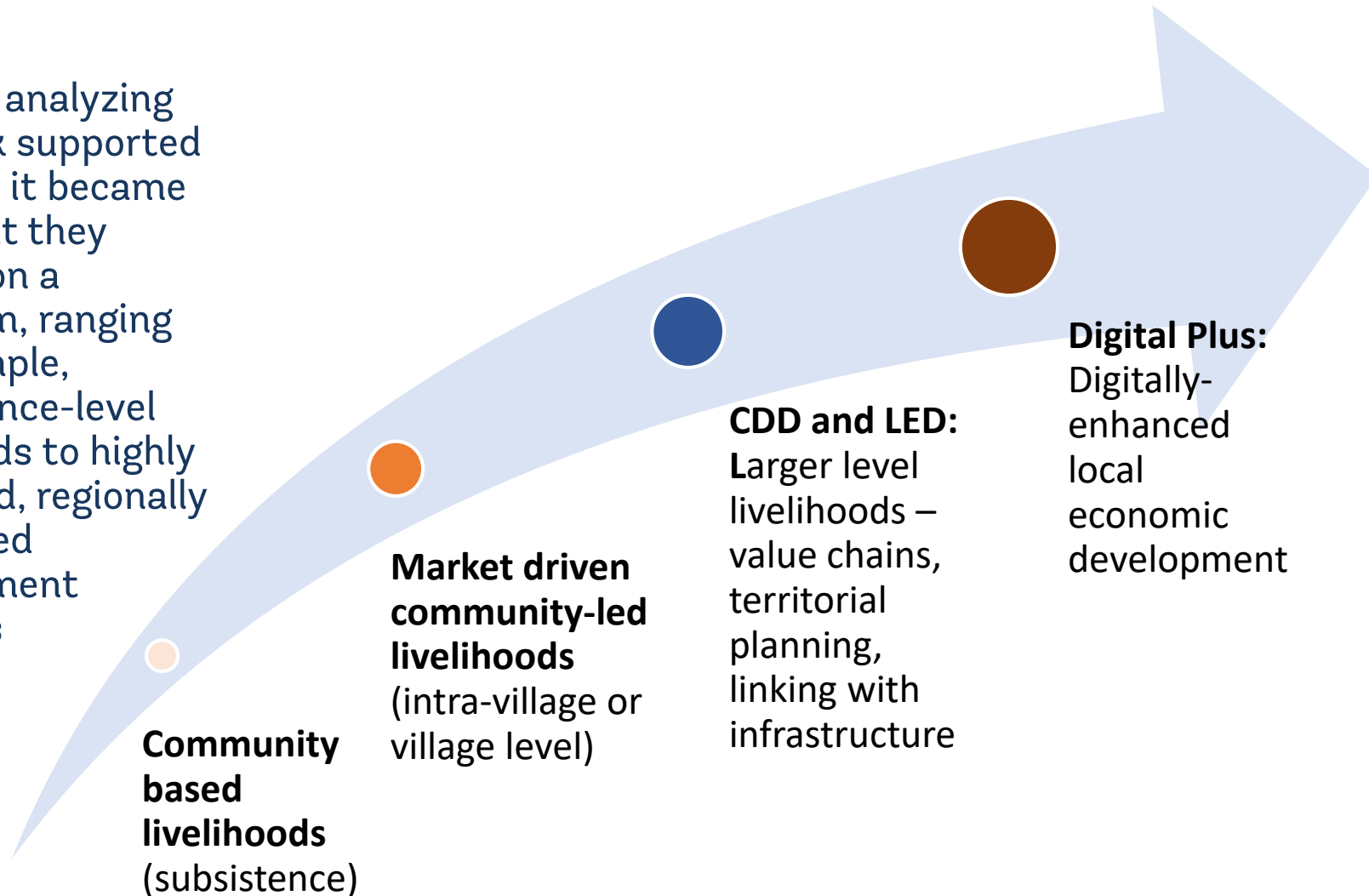
# World Bank CDD and livelihoods/LED Portfolio (as of June 2020)

- **135 active CDD-livelihoods/LED projects**
    - 43 full livelihood projects
    - 92 with livelihood components
  - **65 countries**
  - **CDD-livelihood/LED lending portfolio is concentrated in Africa and South Asia**
- 



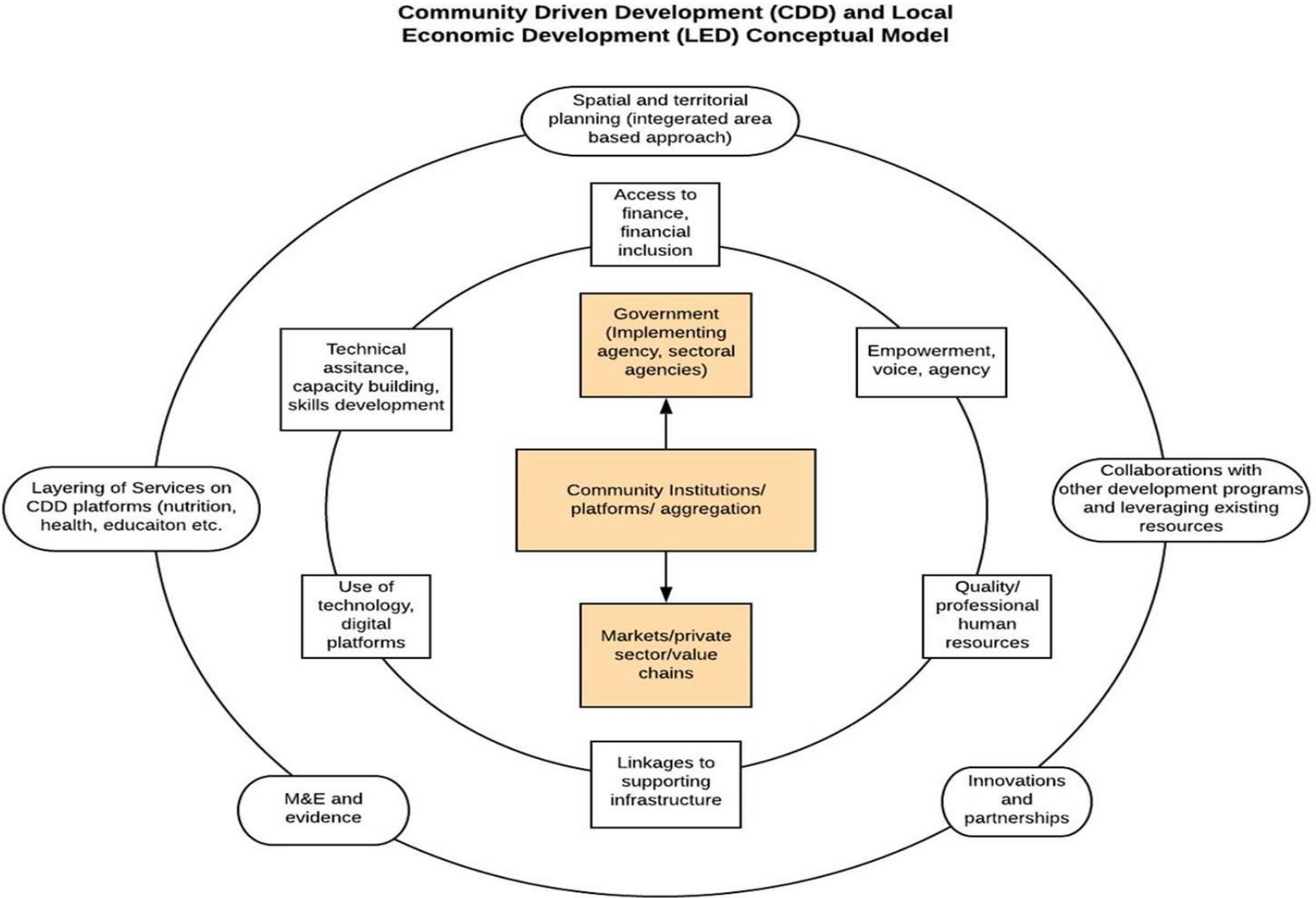
## Evolution of CDD LED Projects

- Through analyzing the Bank supported projects, it became clear that they existed on a spectrum, ranging from simple, subsistence-level livelihoods to highly advanced, regionally integrated development schemes



Source: Analysis of the World Bank supported CDD-LED Projects by LED KSB

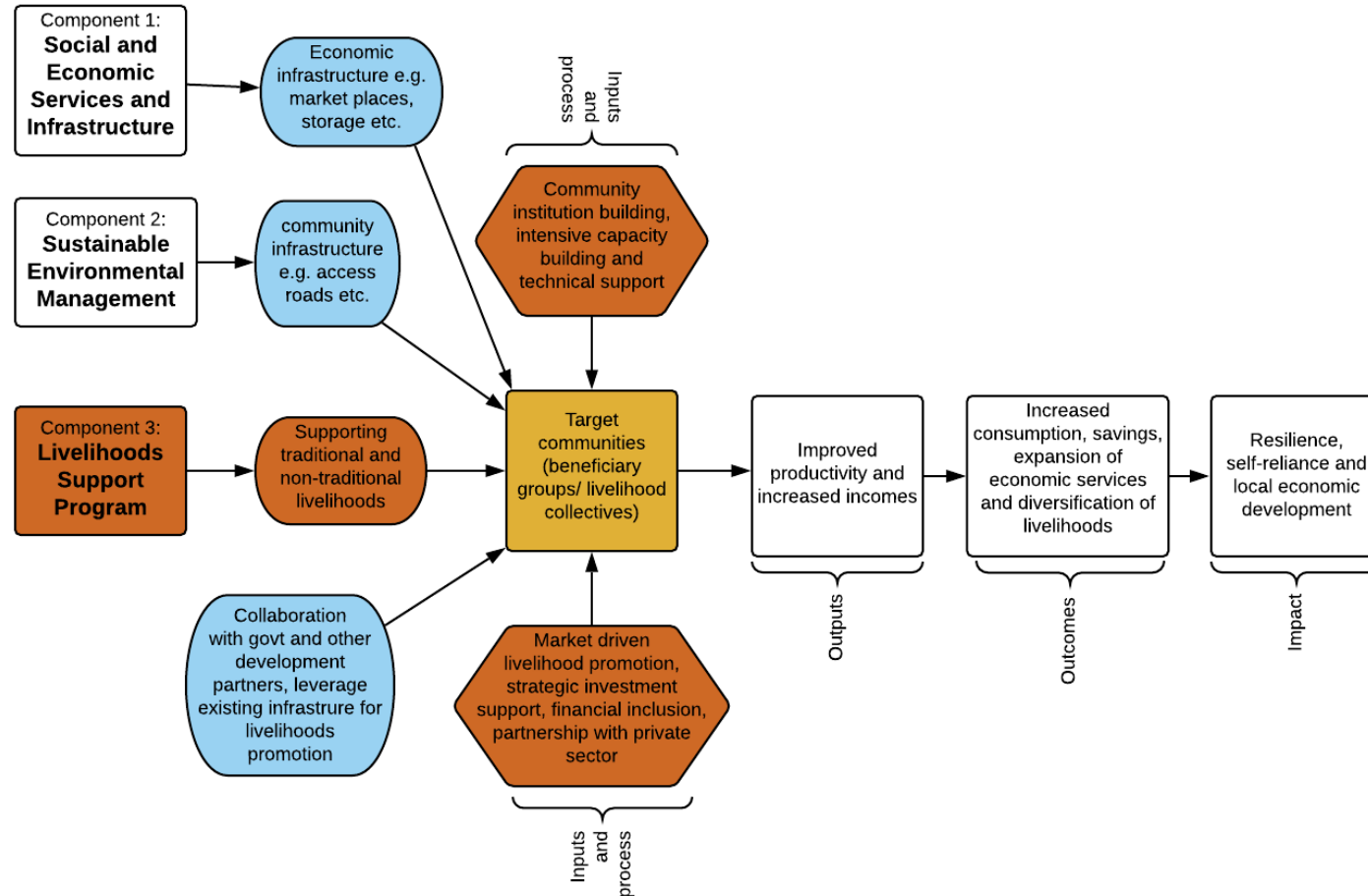
# CDD and LED Conceptual Model







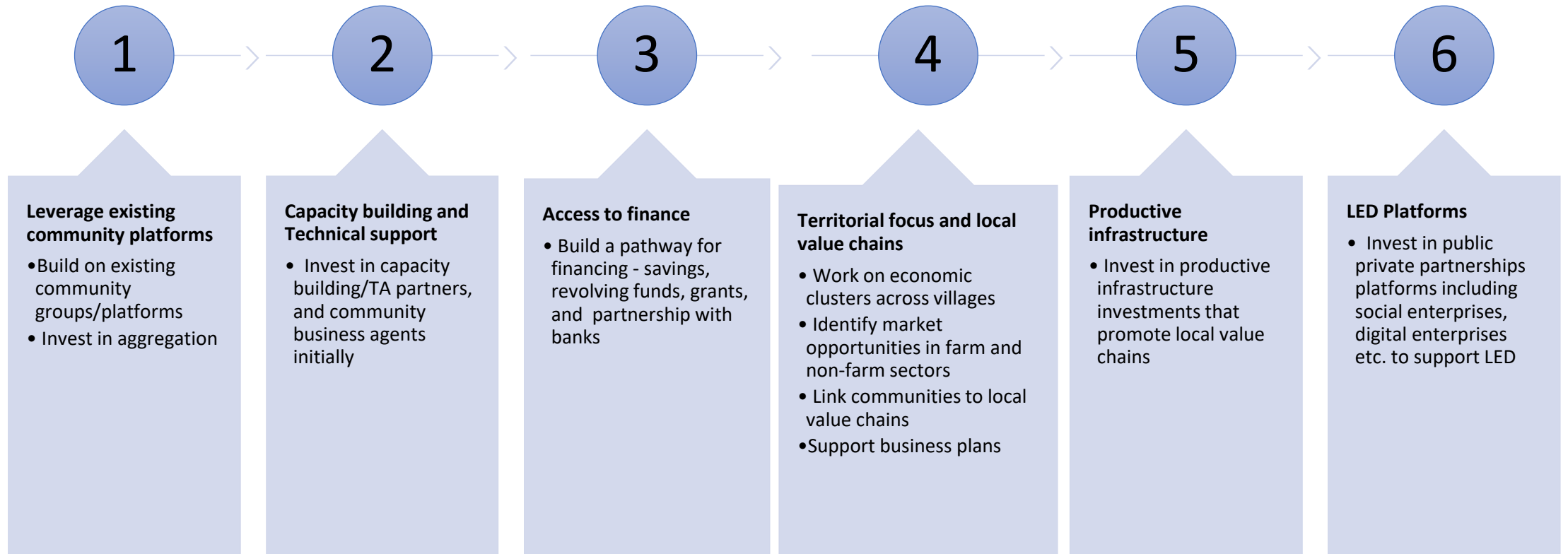
### 3. Key lessons



Example of  
Interlinkages  
in a CDD  
service  
delivery and  
livelihood  
project



# Key lessons





## 4. Implication for Philippines Project



Start simple, then gradually move to a comprehensive approach

***Level 1***

**Building Strong Institutions**

- Saving & credit,
- Influencing group norms
- Regular financial intermediation
- Building livelihood profiles, subsistence enterprises

***Level 2***

**Micro-Enterprises**

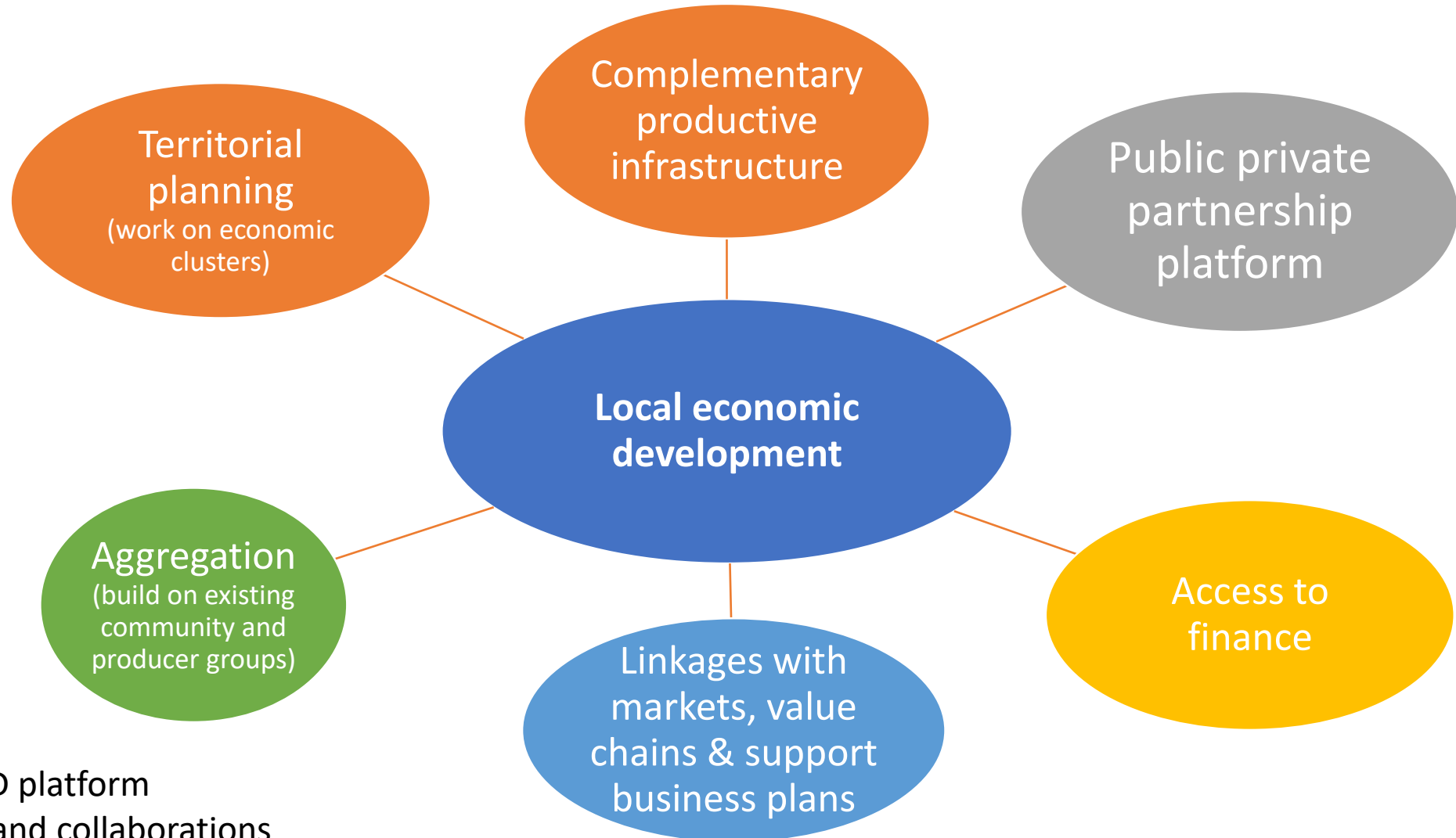
- First Generation entrepreneurs
- Simplest form of enterprises; employing mostly family labour
- Serves local village or nearby market

***Level 3***

**Larger Enterprises**

- Collective enterprises, aggregation, or larger enterprises
- Complex and more institutional, industrial characteristics
- Specialized skills and division of labour
- **New Jobs** beyond family labour
- Use of technology-processing/manufacturing

# Move from a Project to an Ecosystem Approach



- Develop a LED platform
- Partnerships and collaborations
- Digitalization

## Develop a strong institutional and technical support arrangements

### Invest in core team and LED platform initially

Building a core group to lead the LED initiative

- *Create a core group of trained people from Govt, NGO and other sectors*
- *These can receive training and exposure to global LED models'*
- *Mapping of LED ecosystem and develop a LED stakeholders' platform*

### Piloting

Piloting and developing proof of concept

- *Once the core group is trained, pilots could be planned*
- *Develop operations manual*
- *Make arrangements for rigorous capacity building and technical assistance*
- *Use learning by doing approach, make iterative improvements in the pilots*

### Scaling up

Scaling up and mainstreaming

- *Look at opportunities based on the impact and lessons from these pilots, and take them to scale*



# Discussion

