



Development Response to Displacement Impacts Project (DRDIP)

CDD and LED Experiences from Uganda



Presentation overview

- Project introduction
- Territorial approach
- Linking poor to economic activities /value chains
- Capacity building/technical assistance
- Fund flow to beneficiaries
- Key takeaways

DRDIP Uganda Overview

Objective

- To improve access to basic social services, *expand economic opportunities*, and enhance environmental management

Countries and funding

- **Uganda** \$ 50 M IDA credit + \$ 150 M (AF)
- **Livelihoods/LED component** \$ 27.75

Project area

- **Uganda** **11 refugee hosting districts**

Project beneficiaries

- **Host communities and refugees**

Project duration

- **2016 – 2021**

Builds on NUSAF

- learnings, capacities, social capital
- Same IA, leadership, PIU

LED tops the government agenda

**RECOVER
REHABILITATION**
•Affirmative action
•Institution building
•Infrastructure

PRODUCTIVE GROWTH
•Local economic development

**GEO-ECONOMIC
COMPETITIVENESS**

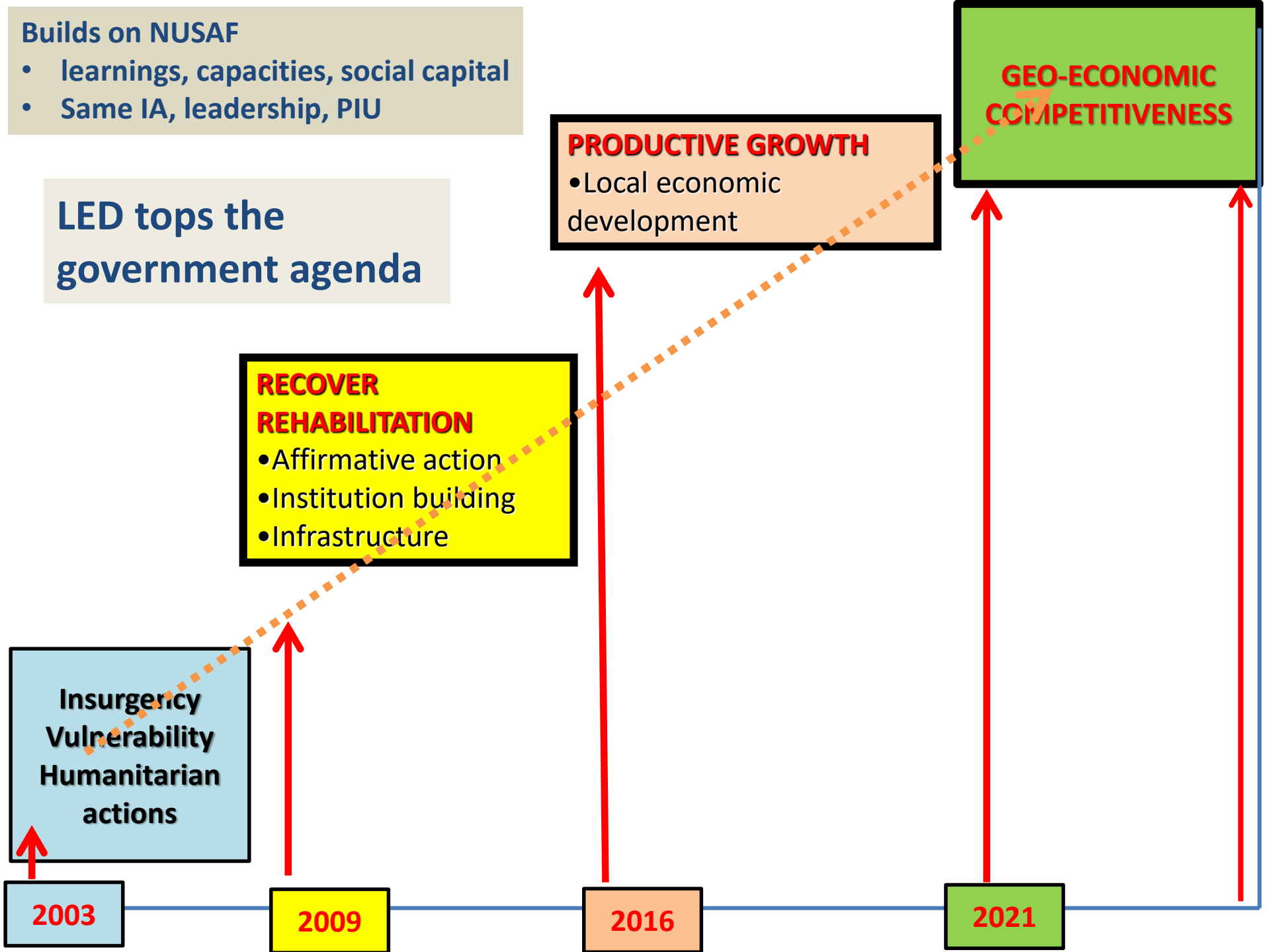
**Insurgency
Vulnerability
Humanitarian
actions**

2003

2009

2016

2021



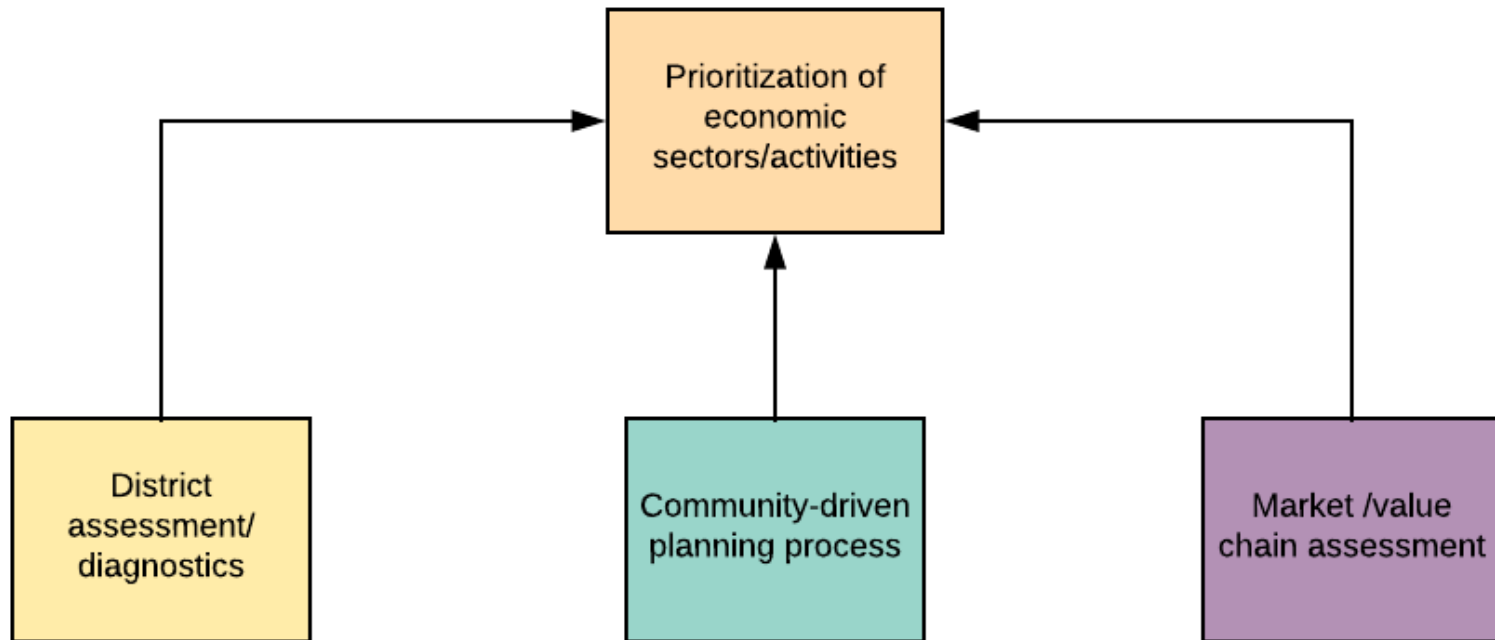
DRDIP: Territorial approach

- ✓ Focuses on maximizing the economic potentials of 11 refugee hosting districts

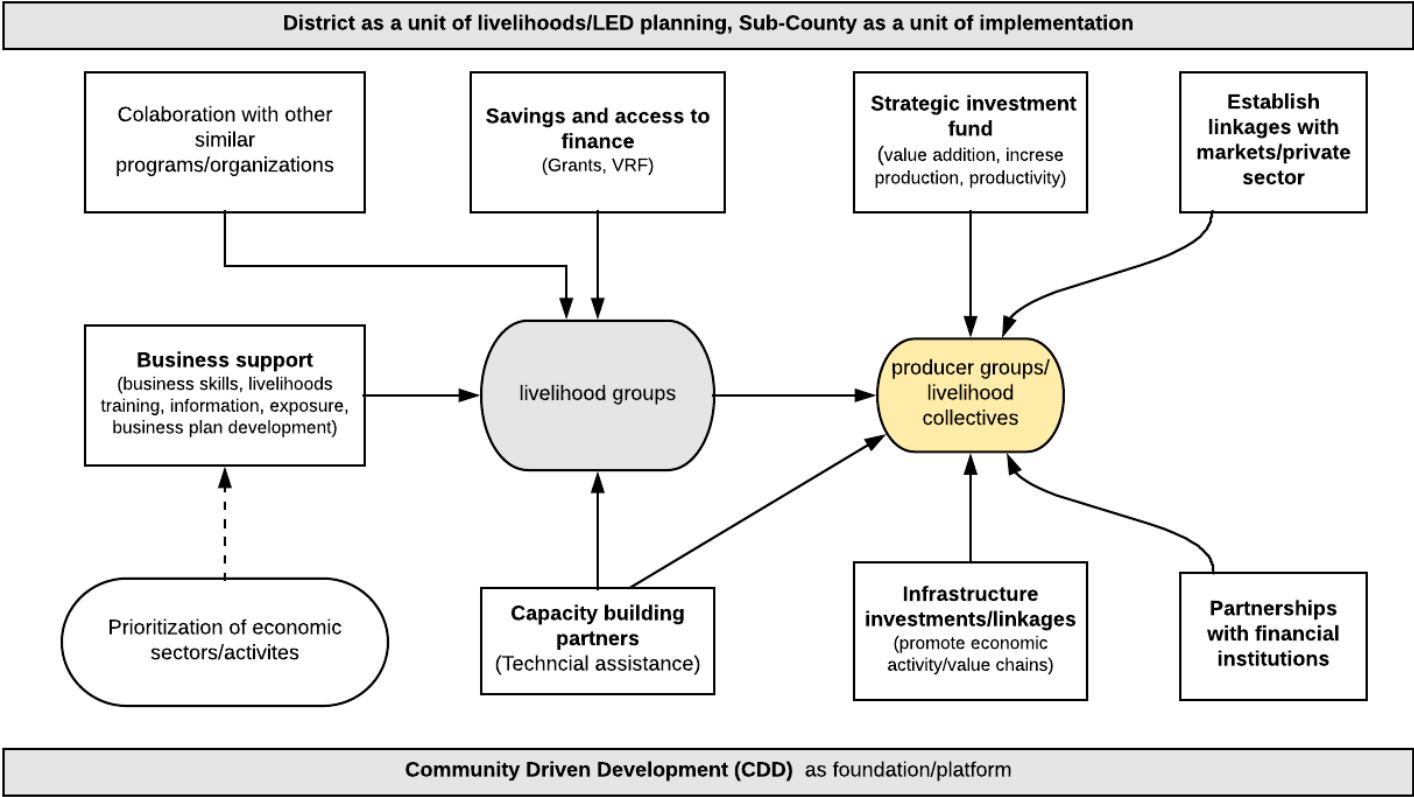
- Most refugee hosting communities in lagging areas
- Development deficit
- Multi-sectoral approach, but LED top priority
- Support farm and non-farm based livelihoods
- District level livelihoods/LED planning



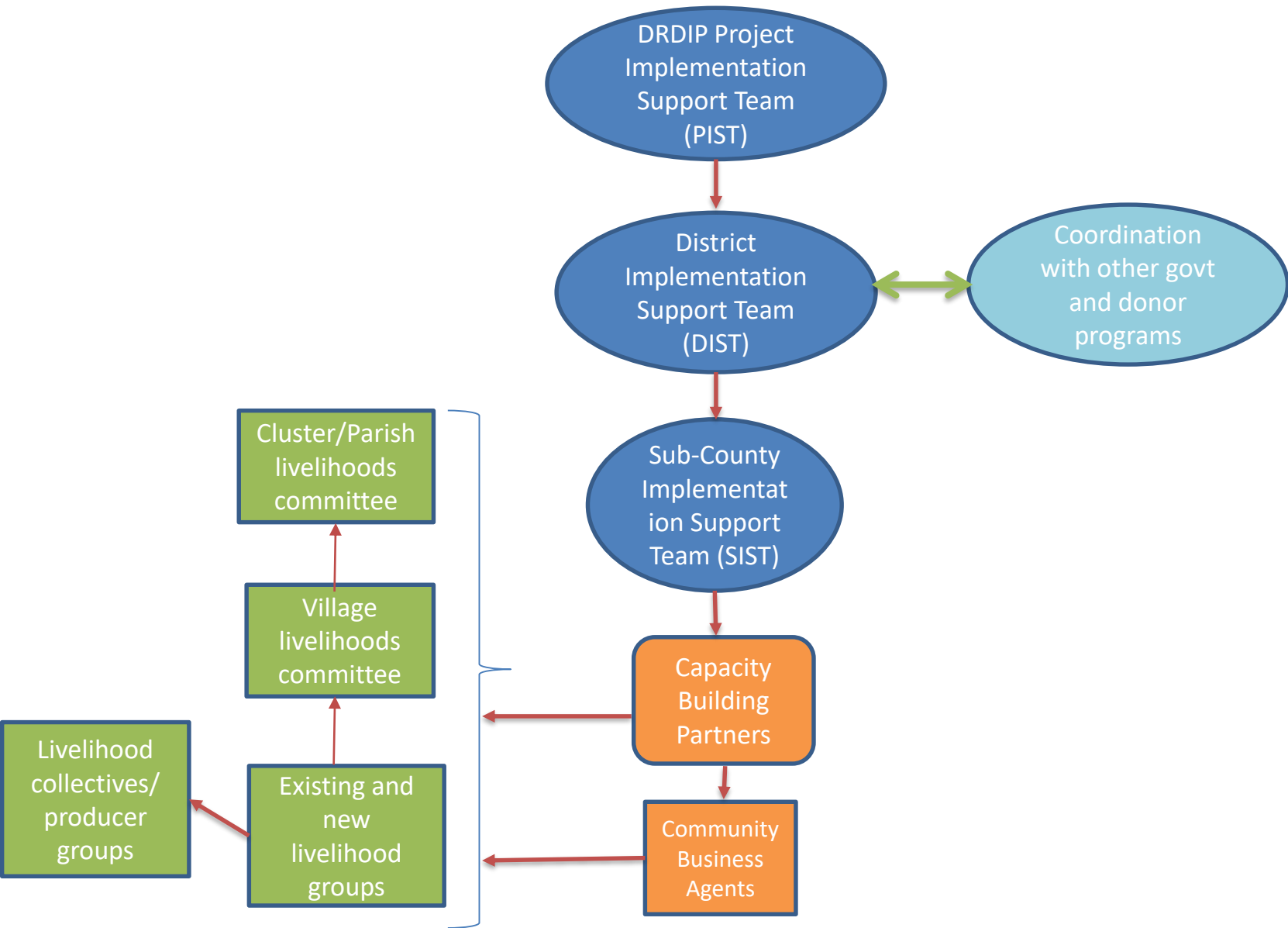
Prioritization of economic sectors/activities at the district level



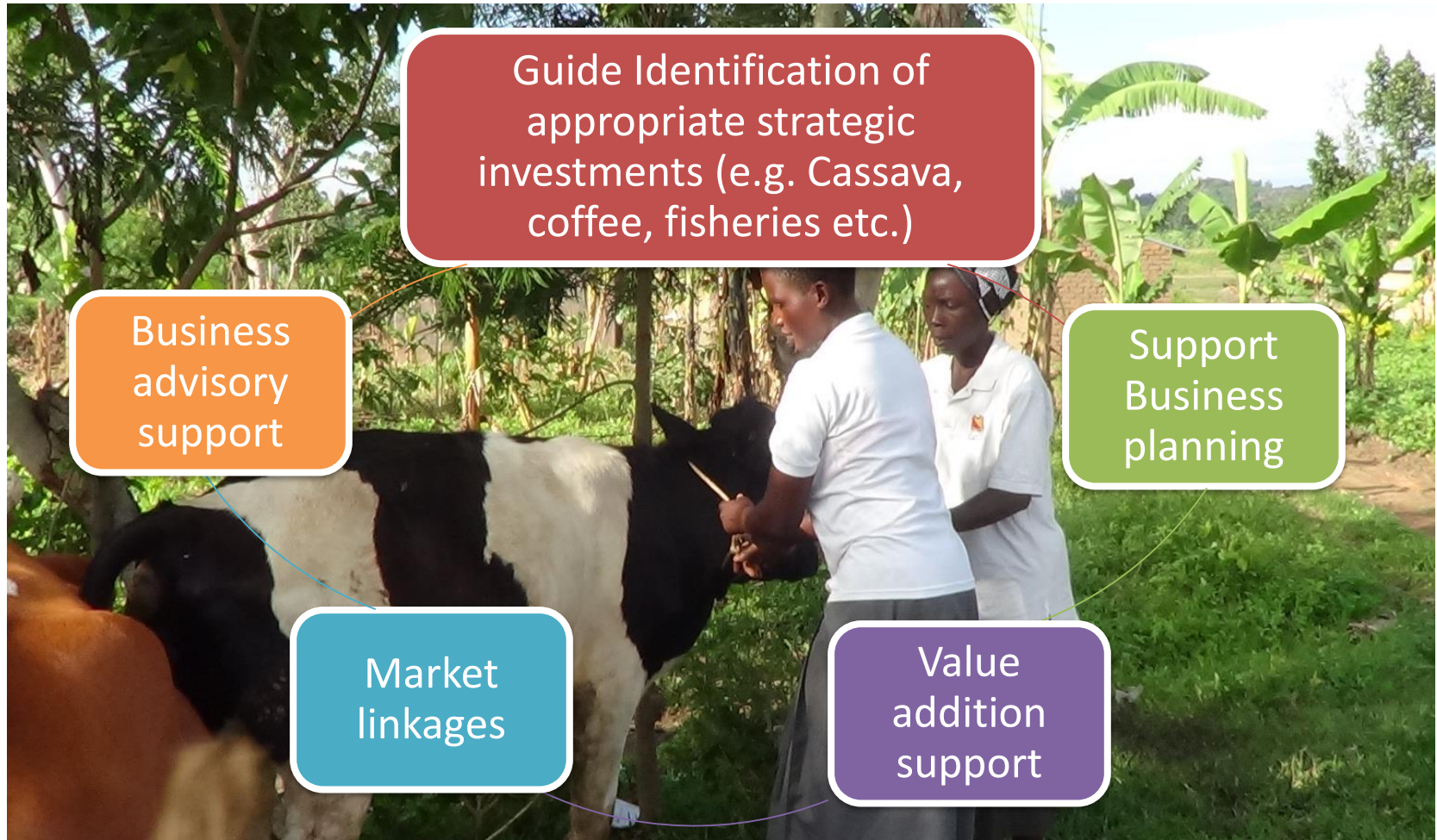
Linking poor to economic activities/value chains



Implementation/capacity building Support architecture



District Commercial and Production Officers (Govt. team)





Capacity Building Partners (from NUSAF)

Agro Max (U) Limited

Commercial nurseries/agriculture, post-harvest technology transfer, integrated apiculture with Bee Natural Uganda

Inspire Africa Limited

Coffee value chain; support rural and urban youth

Gulu University

Fisheries value chain

Enterprise Uganda

Business training, counselling and mentoring, promoting bank linkages, training of community business agents

Victoria Seeds Limited

Inputs, commercialization/marketing services, mentoring

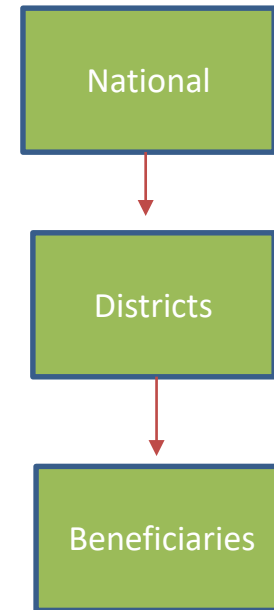
Teso PEDO

Technical support and market linkages for Cassava, groundnuts, citrus and rice

Flow of Funds to Beneficiaries

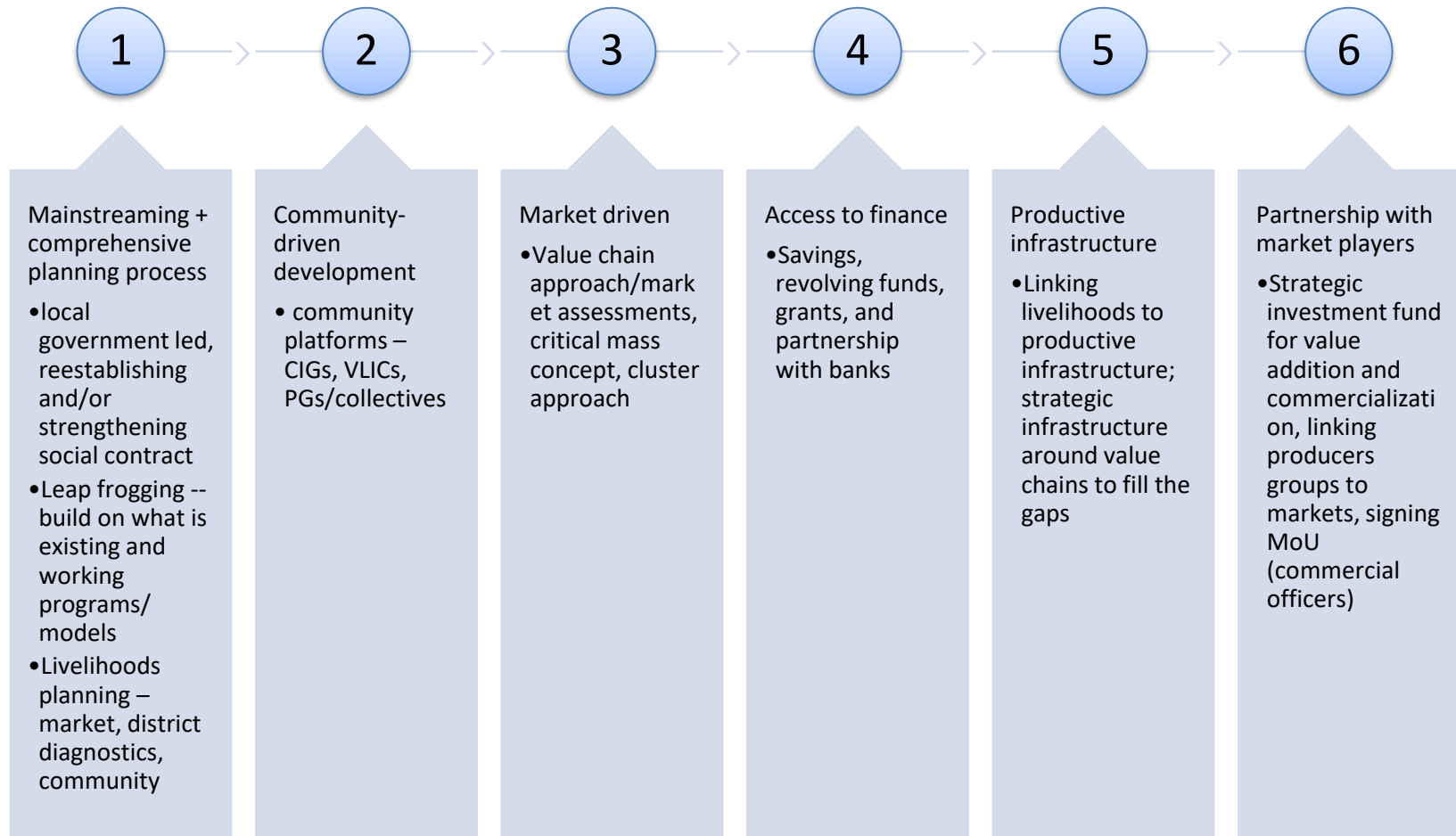
Support to traditional and non-traditional livelihoods

- Grants
- Village Revolving Fund
- Strategic investment fund





Key takeaways



DRDIP LED approach – key takeaways

Pre-conditions

Implementation support

Technical assistance

Phased implementation

What we want more of

Scaling up, strengthening the basic model

Tools for adaptive management

Strategic implementation support

Coordination mechanism

Knowledge management

Knowledge generation



Questions