

# Support to Host Communities in Jordan

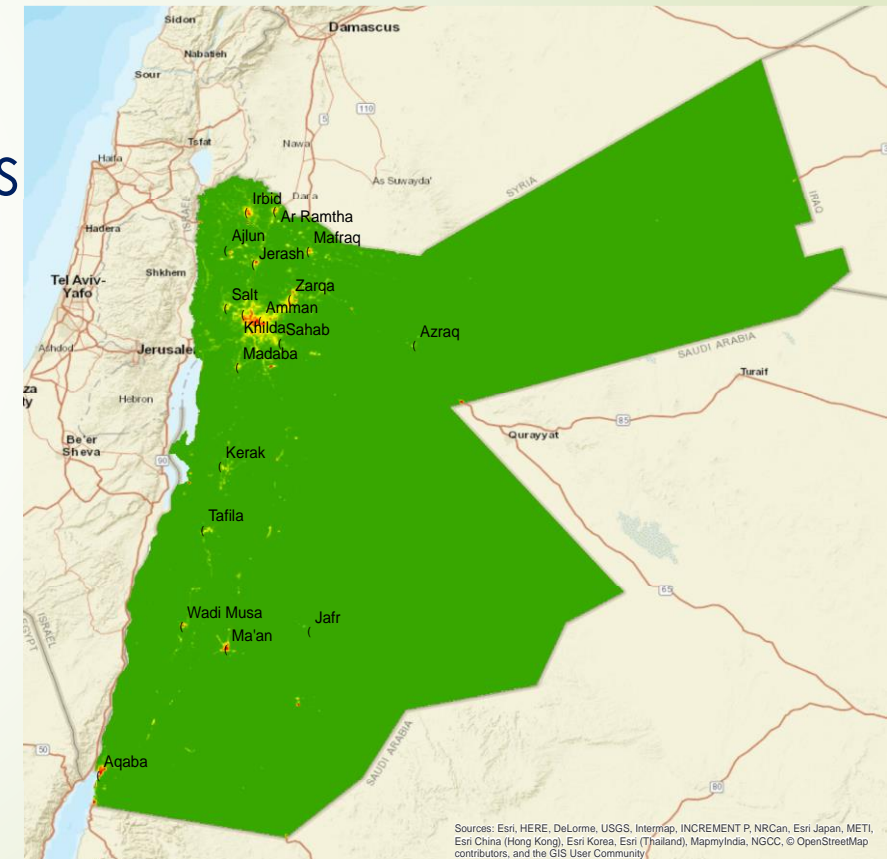


# JORDAN COUNTRY CONTEXT

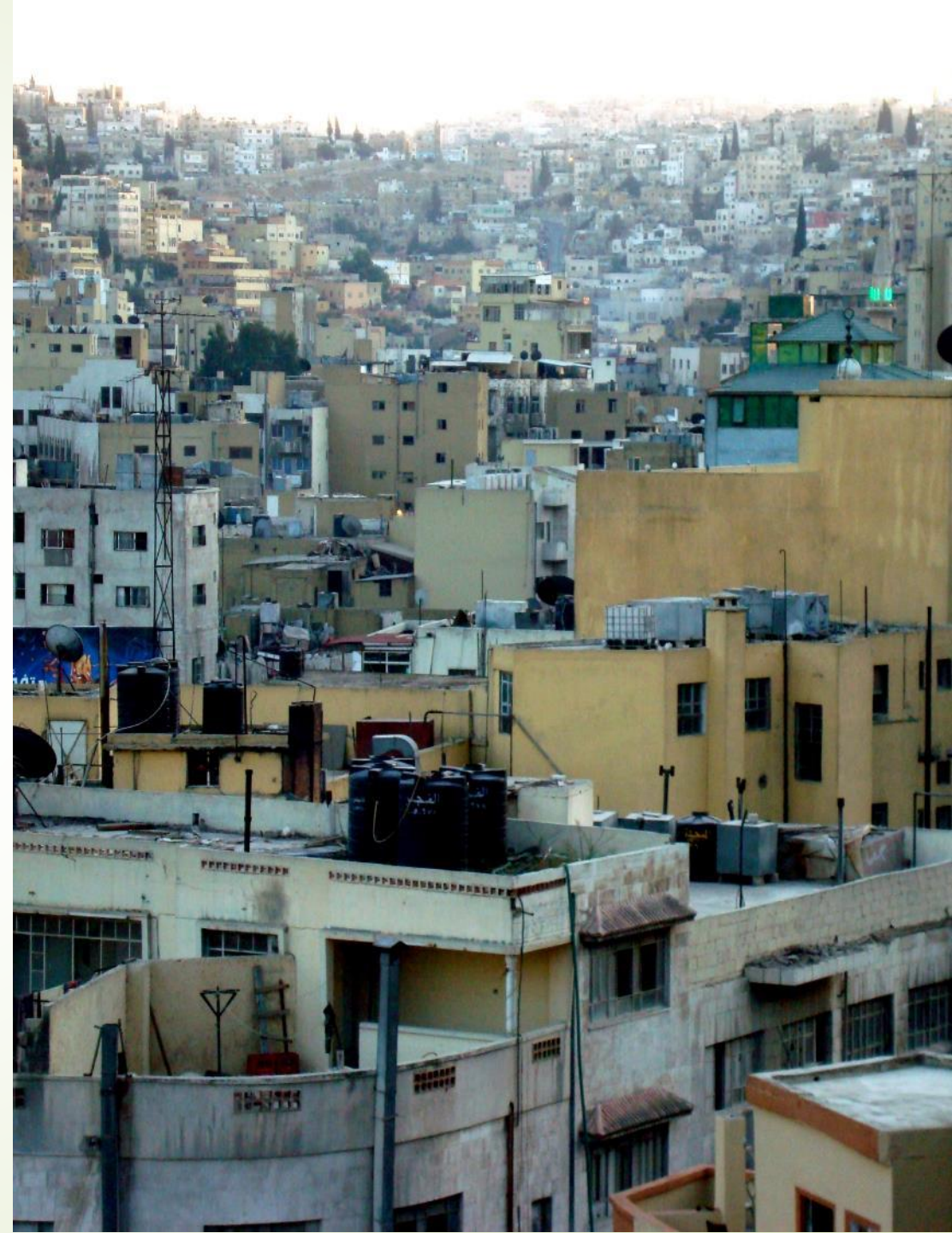
## Challenges on several fronts...

- Large fiscal and Balance of Payments deficits
- Regional turmoil limiting growth
- Low rate of job creation
- Imbalanced economic and demographic growth
  - Refugee crisis straining public resources
- Lack of convergence in access to basic services

## Spatially concentrated economic activity



# COUNTRY CONTEXT - Continued

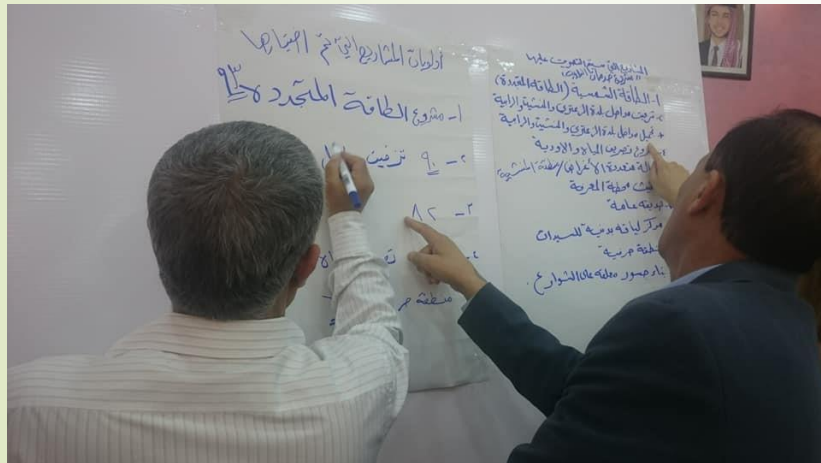


# ESSRP

- help Jordanian municipalities and host communities address the immediate service delivery impacts of Syrian refugee inflows and strengthen municipal capacity to support local economic development

# MSSRP

- support Jordanian municipalities affected by the influx of Syrian refugees in delivering services and employment opportunities for Jordanians and Syrians



# IMPROVED MUNICIPAL SERVICE DELIVERY

## *From an Emergency Response.....*

Helping municipalities respond to the increased demand for services due to the large influx of Syrian refugees

## *.....to a Development Response*

Strengthening municipal resilience:

- Local economic development through partnership with CBOs/NGOs, and private sector
- Jobs creation
- Municipal financial systems reviews
- Urban growth scenarios modeling
- Mitigating risks to social cohesion by addressing drivers of social tension

## **Impact in 26 Municipalities to date:**

- 2.3 thousand km<sup>2</sup> of new and rehabilitated roads, retaining walls, sidewalks, and drainage systems
- Vast investments in public and community and green spaces to promote social cohesion
- Structured community consultations

