

GUATEMALA Earthquakes and Hurricanes RISK PROFILE

What is a country disaster risk profile?

An estimation of the potential economic losses to property caused by adverse natural hazards.

Country Disaster Risk Profile

Applications

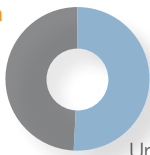
- ▷ **Develop** key baseline data
- ▷ **Evaluate** impact of disasters
- ▷ **Promote and inform** risk reduction
- ▷ **Inform** disaster risk financing

Country At-A-Glance

GDP US\$ **58.7 billion** | Population **15.8 million** | Total Building Exposure US\$ (Replacement Value) **70.3 billion**

Population

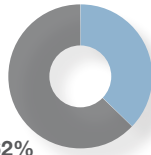
Rural **49%**



Urban **51%**

Gross Capital Stock

Public **38%**



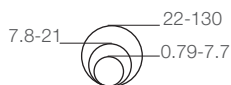
Private **62%**

Two representations of earthquake risk

Provinces by ratio (AAL/Province Exposure)

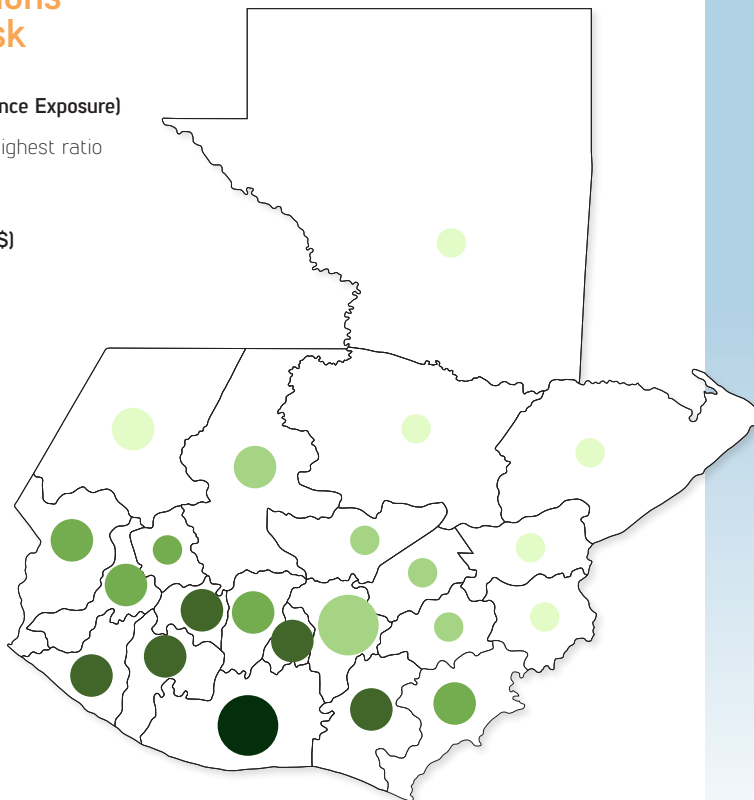
lowest ratio highest ratio

AAL (in millions US\$)



Relative Risk: The darker the color, the higher the ratio of AAL/Province Exposure. The darkest color represents the province of Escuintla which has a higher proportion of vulnerable structures due to construction types and/or potentially higher earthquake intensity.

Absolute Risk: The larger the circle, the higher the Annual Average Losses that the province could potentially incur over the long term.



Snapshot

▷ The earthquake risk in Guatemala is more significant than the hurricane risk.

▷ Annual Average Loss (AAL) from earthquakes is **US\$ 325.3M (0.46% of GDP)** and from hurricanes is **US\$ 21.6M (0.04% of GDP)**.

▷ The Probable Maximum Loss for earthquakes (250 year return period) is **US\$ 7.9B (11.2% of GDP)** and for hurricanes (250 year return period) is **US\$ 622M (1% of GDP)**.

▷ Single-family, residential houses constructed with unreinforced concrete brick masonry are the buildings most vulnerable to earthquakes, **accounting for over 40% of AAL**.

COUNTRYDISASTER RISK PROFILES

GUATEMALA

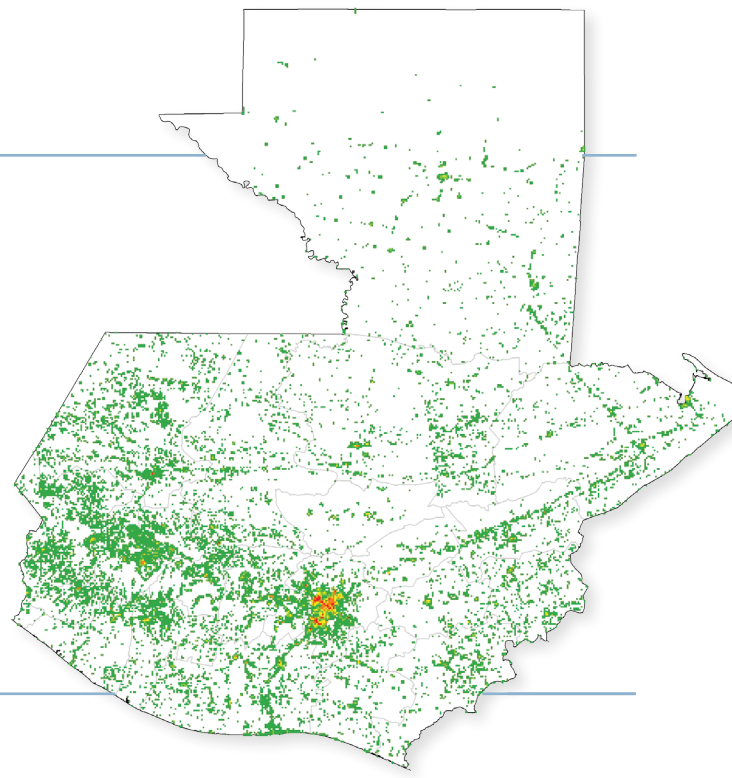
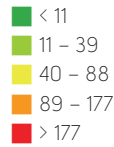
What is at risk in Guatemala?

Economic assets such as residential and non-residential buildings are at risk. These assets that are exposed to natural disasters are referred to as a country's **Building Exposure**.

The map illustrates the value and distribution of residential and non-residential buildings in Guatemala at risk from earthquakes and hurricanes.

Legend

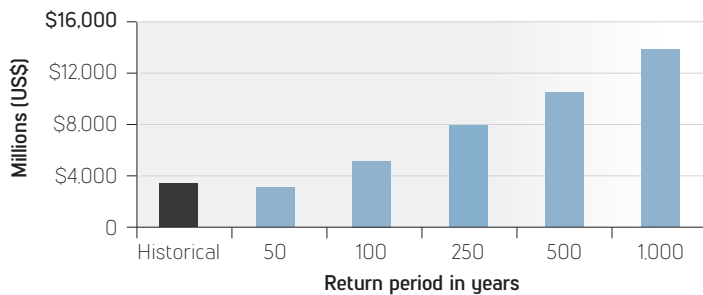
Exposure
(in millions US\$)



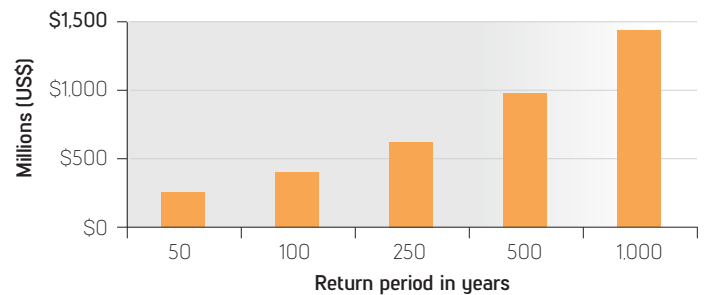
What are the potential losses in Guatemala?

These charts show the estimated potential future losses to Guatemala that could be caused by earthquakes and hurricanes that could occur within a given return period. In 1902, a magnitude 7.5 earthquake struck Guatemala. If this historical event were to happen in 2015, it would cause losses of US\$ 3,200M amounting to 4.6% of GDP.

Estimated Losses Due to **EARTHQUAKES**

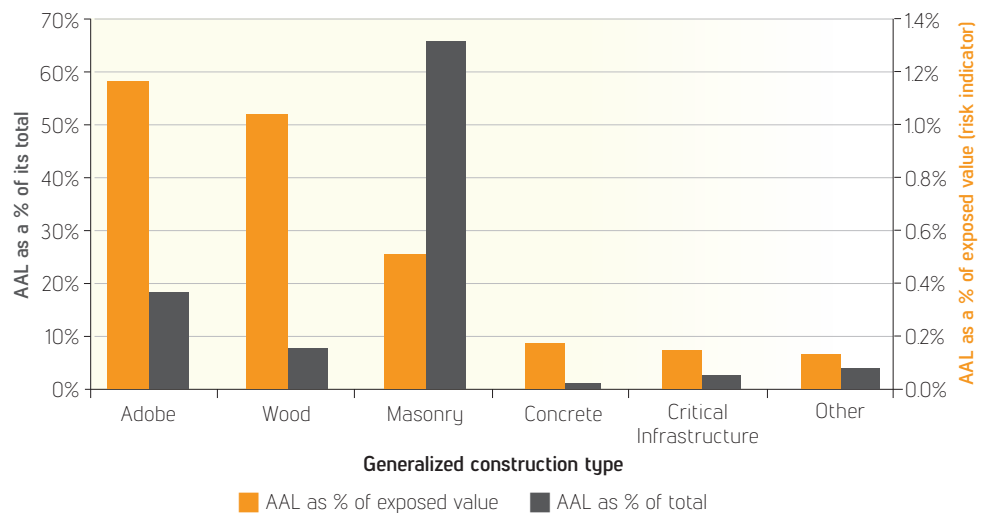


Estimated Losses Due to **HURRICANES**



How can earthquake risk be reduced?

Risk reduction interventions could be prioritized in the highest risk ranked department of Escuintla in Guatemala (see map on previous page). At an estimated additional cost of US\$ 96M, most single family adobe buildings in Escuintla could be retrofitted up to the standards of good quality, wood frame buildings which would reduce the risk of adobe buildings by over 85%. This would also reduce the country's AAL by 3%.



To learn more, visit: collaboration.worldbank.org/groups/cdrp or email cdrp@worldbank.org

© 2016 International Bank for Reconstruction and Development / The World Bank
1818 H Street NW
Washington DC 20433
Telephone: 202-473-1000
Internet: www.worldbank.org

This work is a product of the staff of The World Bank with external contributions. The findings, interpretations, and conclusions expressed in this work do not necessarily reflect the views of The World Bank, its Board of Executive Directors, or the governments they represent.

The World Bank does not guarantee the accuracy of the data included in this work. The boundaries, colors, denominations, and other information shown on any map in this work do not imply any judgment on the part of The World Bank concerning the legal status of any territory or the endorsement or acceptance of such boundaries.

Rights and Permissions

The material in this work is subject to copyright. Because The World Bank encourages dissemination of its knowledge, this work may be reproduced, in whole or in part, for noncommercial purposes as long as full attribution to this work is given.

Any queries on rights and licenses, including subsidiary rights, should be addressed to World Bank Publications, The World Bank Group, 1818 H Street NW, Washington, DC 20433, USA; fax: 202-522-2625; e-mail: pubrights@worldbank.org.