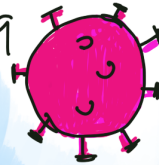


# ENSURING CONTINUITY OF ESSENTIAL FRONTLINE SERVICES in the face of COVID-19



shifting from hospital to primary care

updated guidelines

create EFFICIENCY



increasing testing

create EQUITY



ensure TRANSPARENCY of spending



wide network at the community & district level & mobile services



PPE measures

holistic healthcare

