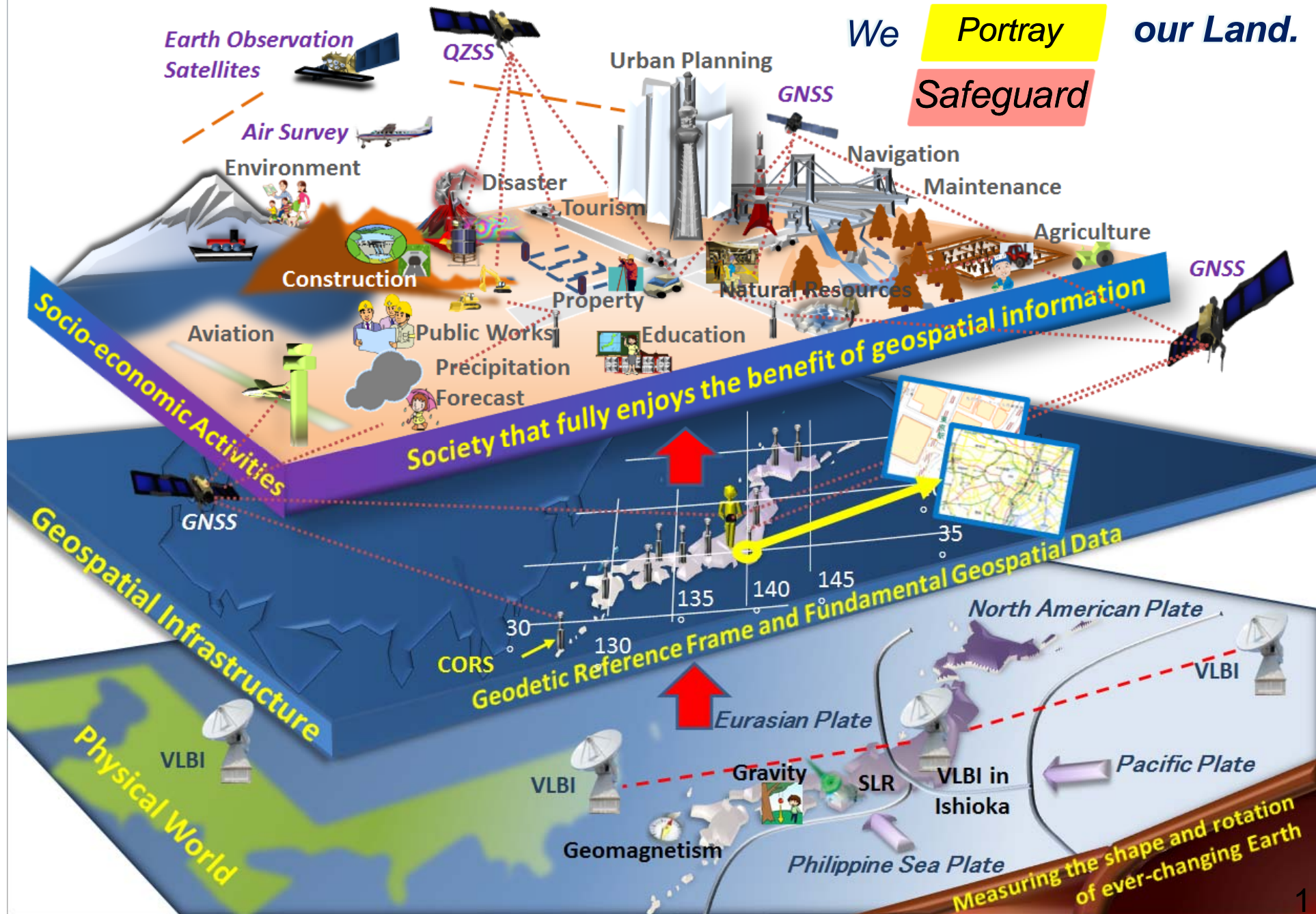


Mission of GSI



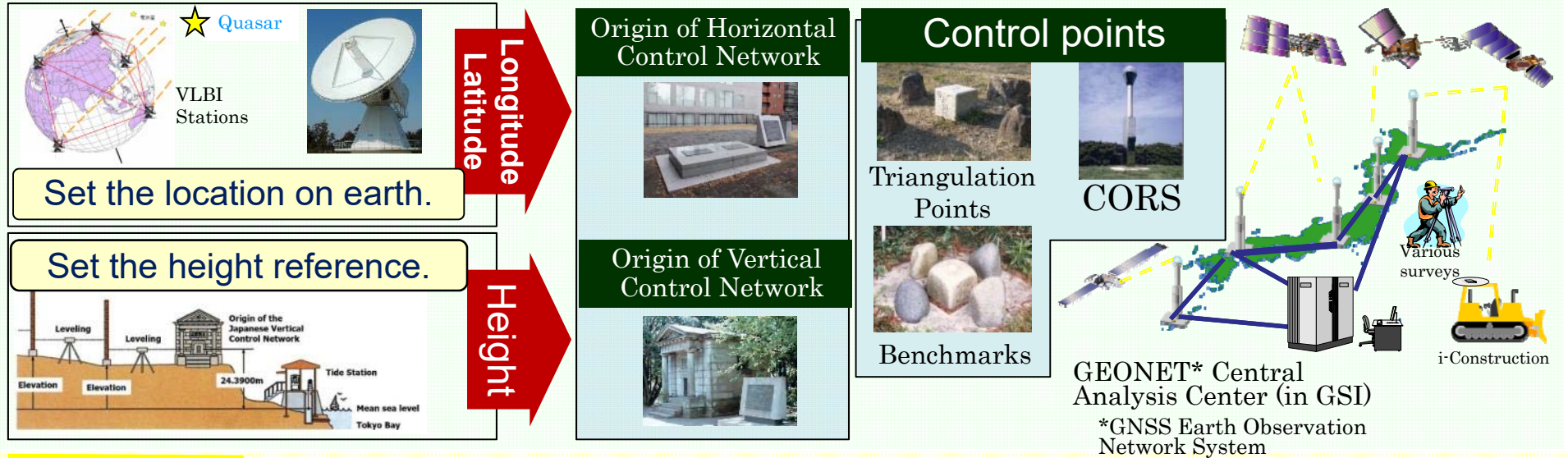
We **Survey**
Portray our Land.
Safeguard



Role of GSI

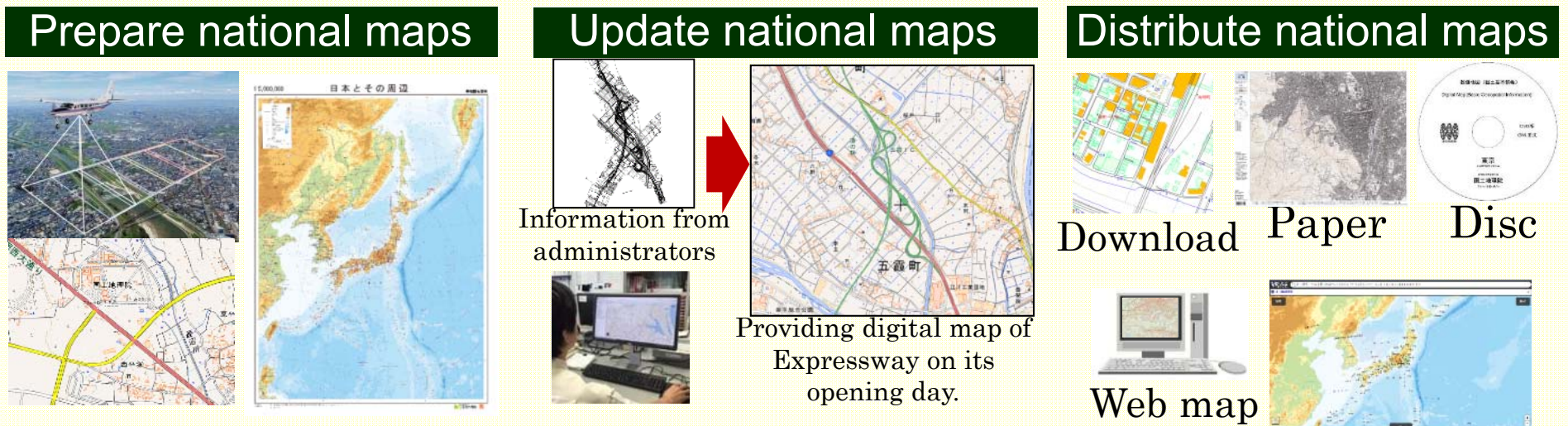
Survey

Develop and maintain the country's geodetic reference frame



Portray

Prepare, update and widely distribute national maps



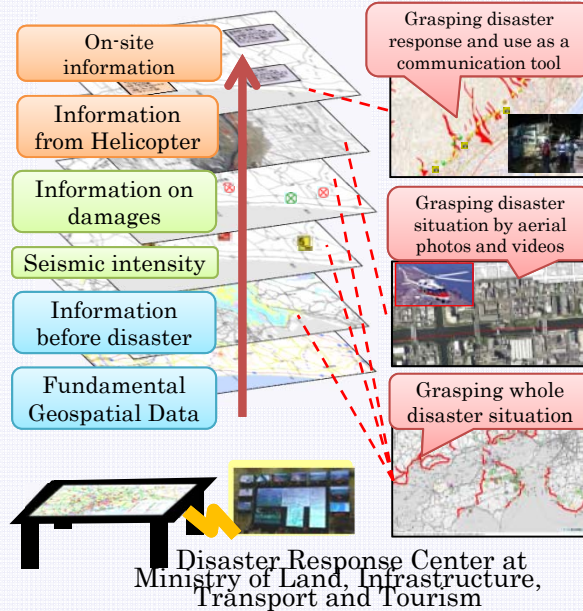
Role of GSI

Safeguard

Provide maps in a timely manner at each phase of disaster cycle

Information integration and sharing

Disaster information system for rapid grasping and sharing information by collecting a variety of disaster information and for overlaying on one digital map



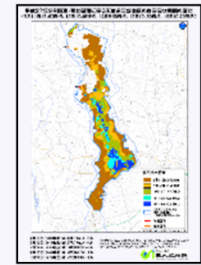
Promptly provide maps and images of damaged areas



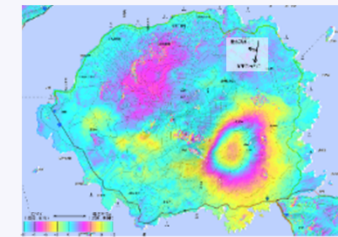
Flood of Kinu River (Movie)



Aerial photos before and after the flood



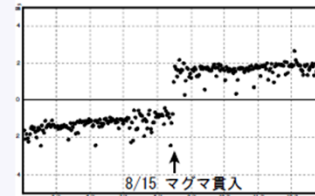
Estimated flooded area



Volcanos

Interferometric SAR (InSAR) image by ALOS-2 Satellite (Aug.10 to 24, 2015)
(Original data are owned by JAXA)

Baseline from Kagoshima No.2 to Sakurajima



Ground movement detected by CORS

Daily position data (Apr. 1 to Dec. 31, 2015)

Remote and in situ survey

Using latest technologies such as airborne/UAV survey, temporal Remote GNSS Monitoring System etc.



Taking photos by airborne survey



Setting temporal Remote GNSS Monitoring System



Taking videos by UAV



GSI's Disaster Response



【Mission】 Prompt development and provision of geospatial information as a designated government organization in accordance with the Basic Act on Disaster Control Measures.

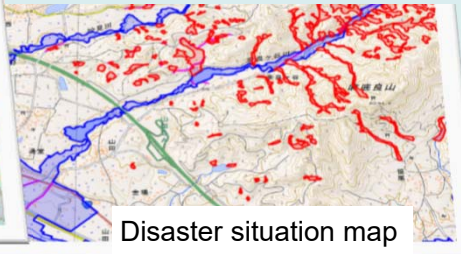
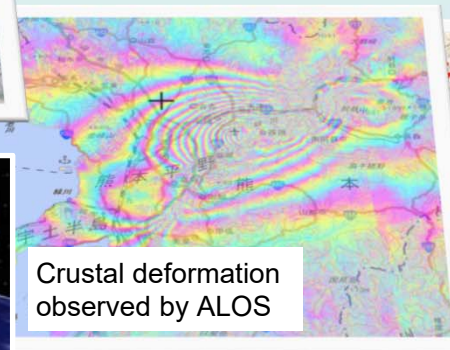
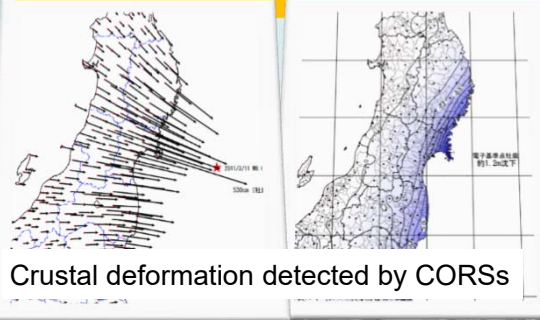
During disasters

① **CORS** monitors crustal deformation in real time, continuously for 24 hours.

② **Aerial photo** grasps damage by emergency photographing.

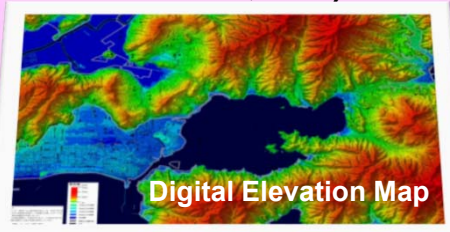
③ **InSAR** ALOS observation grasps area-wide crustal deformation.

④ **Disaster situation map** visualizes disaster situation.

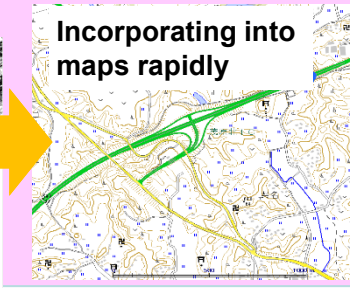
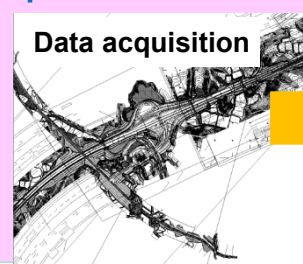


Normal times

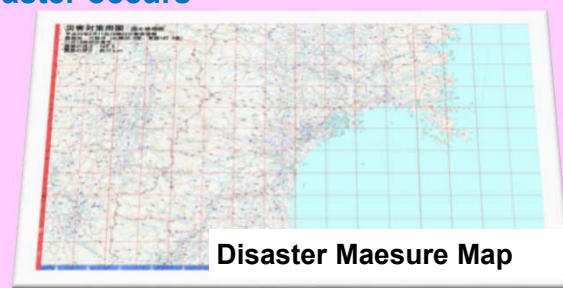
Developing thematic maps (elevation data, etc.)



Developing and updating Digital Japan Basic Map to provide up-to-date geospatial information



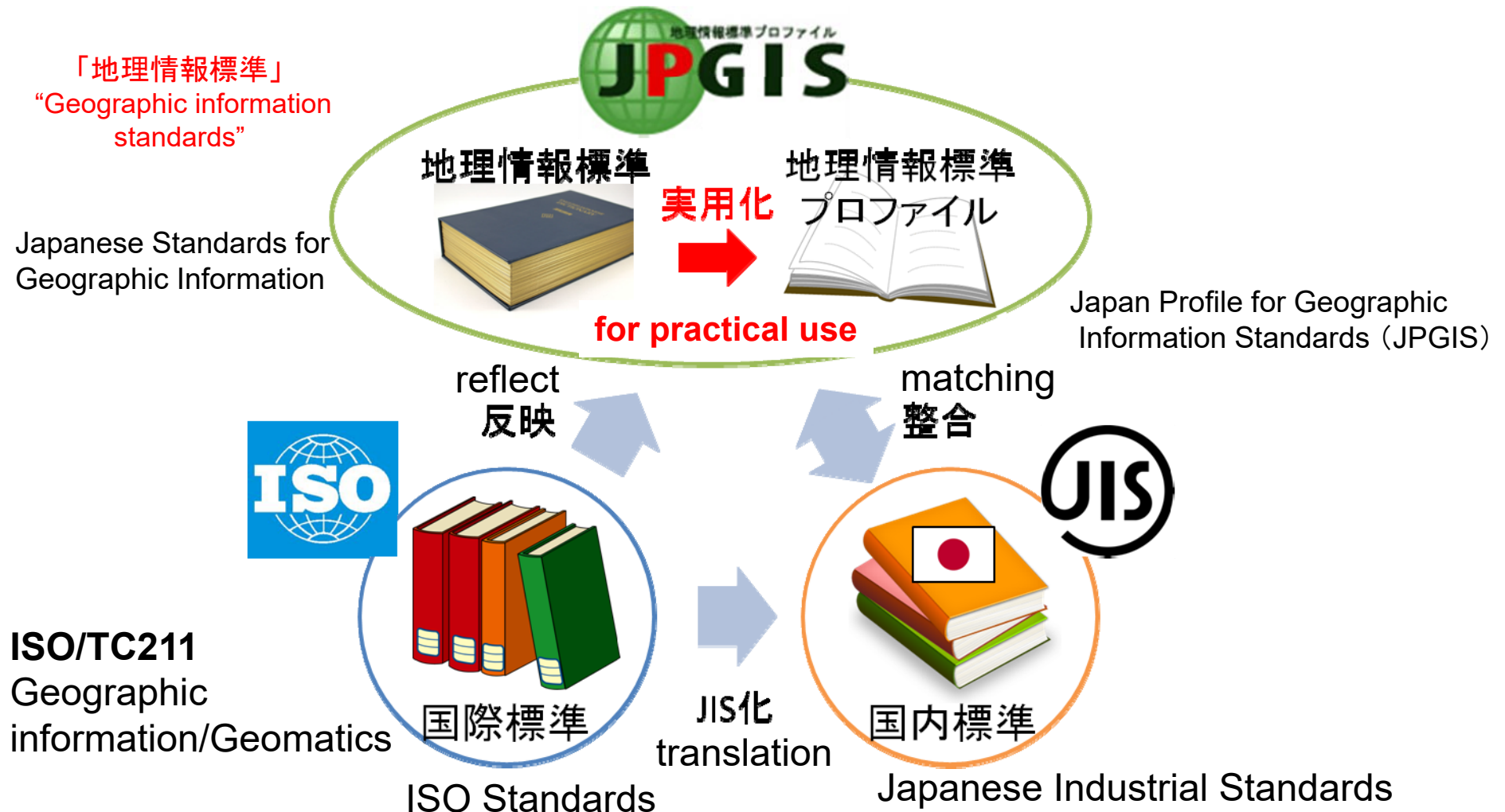
Preparing Disaster Measure Maps to rapidly provide maps of affected areas when a disaster occurs



Japanese standards for geographic information



ensures consistency with the international standards



GSI set its data policy based on the open data policy of the Government of Japan

Geospatial Information Authority of Japan Website Terms of Use (Version 2.0)

[GSI Home](#)

GSI Activities

- [About GSI](#)
- [Policy Planning](#)
- [Public Survey](#)

1. Using the content on this website

Information made available on this website (hereinafter referred to as “Content”) may be freely used, copied, publicly transmitted, translated or otherwise modified on condition that the user complies with provisions 1) to 7) below. Commercial use of Content is also permitted.

Everyone has freedom to use, copy, transmit, translate, modify the content from GSI, including commercial use. The attribution must be kept, and regulations independent from the copyright issue stays the same. (e.g. regulations by Survey Act)

- The Terms of Use are compatible with the Creative Commons Attribution License 4.0 (hereinafter referred to as the CC License). This means that Content based on the Terms of Use may be used under the CC License in lieu of the Terms of Use.