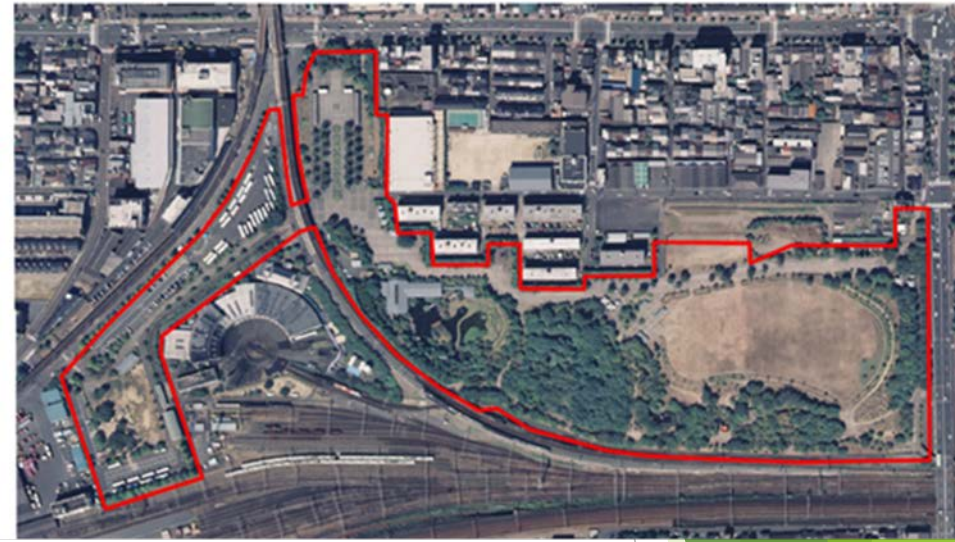


# **Urban Regeneration**

**Western Area of Kyoto Station**



- 1991-1993: When the Japanese National Railways was divided and privatized, Kyoto City acquired the vacant lot of the former Umekoji marshalling yard.
- 1992: The development of the area began as a project in commemoration of the 1200th anniversary of the transfer of the capital to Kyoto.

● Theme: “Creation of Urban Green Infrastructure” “Inheritance of History and Jumping to the Future”

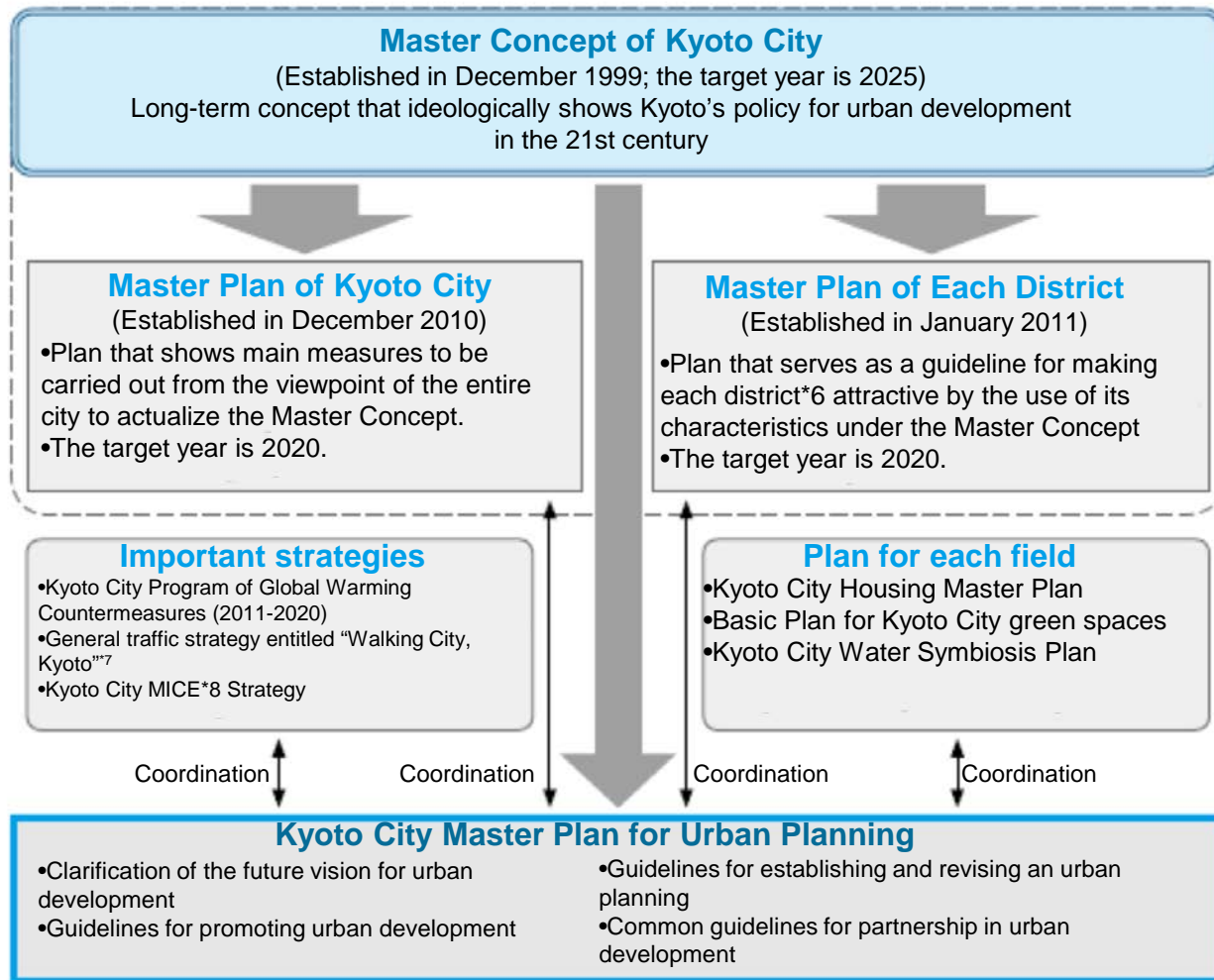
● Area: 137,129 m<sup>2</sup> (as of March 2014)

● Date of opening: April 29, 1995



# Master Plan for Urban Planning and Future Plan for Revitalization of the Western Area of Kyoto Station

## Positioning of the Master Plan for Urban Planning



### Kyoto Urban Plan (Kyoto International, Cultural, and Tourist City Construction) Guidelines for construction, development, and maintenance of urban planning zones

(Determined by Kyoto Prefectural Governor in November 2007; the target year was 2015)  
•Plan that shows not only the objectives of urban planning zones but also the division of zones,<sup>9</sup> land use, urban facilities,<sup>10</sup> urban development projects,<sup>11</sup> or the development or conservation of natural environments

# Main Projects That Were Carried Out or Are in Progress in the Western Area of Kyoto Station

Project	Implementing body	Financial sources
Umekoji Park	Kyoto City	Kyoto City purchased a vacant lot that was used for freight storage and has been developing the lot by the use of central government subsidies (for about a half of the cost).
Kyoto Central Wholesale Market (Redevelopment of facilities)	Kyoto City	Municipal bonds, central government subsidies, charges for use
Kyoto Aquarium	ORIX Real Estate Corporation	100% from the private sector
Kyoto Railway Museum	West Japan Railway Company	100% from the private sector
New railway station	West Japan Railway Company	40% from the private sector, 30% from the city, 30% from the central government
Bustling zone	Starts Corporation Inc.	100% from the private sector
Museum of Food Culture of Kyoto: Ajiwaikan	Kyoto Prefecture, Kyoto City	City and prefecture
Kyoto Research Park	Kyoto Research Park Corp.	100% from the private sector



Future vision

Future vision

By the use of various local resources

## A town that will create new bustle in Kyoto

Image of revitalization

Image 1

All residents can live in peace and enjoy culture.

- The urban environment will develop so that residents can come in contact with greenery and historic and cultural resources.
- Use of vacant houses will vitalize local activities for urban development, which in turn will revitalize communities.

Image 2

New business and liveliness can be created.

- Bustle will be created by the use of food directly sent from Kyoto City Central Market.
- Shopping districts closely connected with communities will be revitalized.
- The creation of new business will progress around the center of KRP.
- Commercial and service functions will be further concentrated around Kyoto Station (accumulation of urban functions).

Image 3

A town where a wide range of generations can gather and enjoy.

- Kyoto Railway Museum opened (in the spring of 2016) and people of various generations, including railway fans, visit from various places.
- Further bustle will be created through use of the “bustling zone” accompanying the development of Kyoto City Central Market and an increase in the number of visitors for historic and cultural resources.
- Umekoji Park will become the major base for bustle.

## Two Plans

### Plan 1 Traffic strategy for realizing “Walking City, Kyoto,” where people and public transport facilities have priority

- Initiative (1) Improvement of access to the area by, for example, the establishment of a new JR station near Shichijo Street (large excursion)
- Initiative (2) Make excursions easier within the area (small excursions)

A “new JR station” is scheduled to open in the spring of 2019.

### Plan 2 Construction of “a system for urban planning” by the use of communities and residents’ power unique to Kyoto

- Initiative (3) Urban planning through cooperation among various local entities

## Eight measures

Measure

1

Promotion of urban environments that enable the residents to enjoy green spaces and affluence

Measure

2

Strengthening of the function of Umekoji Park as a base

Measure

3

Kyoto’s leadership in promoting the food culture of Japan

Measure

4

Revitalization of shopping zones closely connected with communities

Measure

5

Creation of new business and social business around the center of KRP

Measure

6

Great progress as a railway “Mecca”

Measure

7

Creation of new local resources and inheritance of historic and cultural resources

Measure

8

Promotion of strategic utilization of under-used or unused sites (whether public or private)

# Members of the Committee on the Establishment of a Future Plan to Revitalize the Western Area of Shimogyo Ward and the Committee's Process of Establishment

## 1. Legal position of the Committee on the Establishment

The Committee was created as an affiliated agency of Kyoto City's executive organ under Article 138-4 (3) of the Local Autonomy Act to respond to the Mayor of Kyoto's request and discuss matters related to the future plan to revitalize the western area of Shimogyo Ward.

## 2. Committee members (14 members in total)

Not only scholars but also various relevant persons from organizations for Kyoto Central Market, a shopping district, companies, neighborhood associations, etc. participated in the establishment of a future plan to revitalize the western area of Kyoto Station.

	Profession etc.		Profession etc.
1	Scholar (specialized in urban planning)	8	Company located in the western area of Kyoto Station
2	Scholar (specialized in townscape design)	9	Architecture design office
3	Scholar (specialized in agricultural economics)	10	Mass media (radio station)
4	Organization for Kyoto Center Market (fishery section)	11	Cooking expert
5	Organization for Kyoto Center Market (fruit and vegetable section)	12	Neighborhood association in the western area of Kyoto Station
6	Shopping district	13	Neighborhood association in the western area of Kyoto Station
7	Economic association	14	Civil committee member



### 3. Progress of discussions in the Committee (June 2014 to March 2015)

June 2014	<p>1st committee meeting</p> <p>Exchange of opinions about the current condition of the area, issues, and future images</p>
August	<p>2nd committee meeting</p> <p>Report about results of analysis of the current condition, potentials, and issues; exchange of opinions about future direction; field trip</p>
September	<p>3rd committee meeting</p> <p>Discussion about “a rough draft Future Plan to Revitalize the Western Area of Kyoto Station”</p>
December	<p>4th committee meeting</p> <p>Discussion about “The Future Plan to Revitalize the Western Area of Kyoto Station (draft)”</p>
February 2015	<p>Opinion-gathering from residents about Future Plan to Revitalize the Western Area of Kyoto Station (draft) (until Mar. 11)</p>
March	<p>5th committee meeting</p> <p>Report on results of opinion-gathering from residents; discussion about “a report concerning the future plan to revitalize the western area of Kyoto Station”</p> <p>Future plan to revitalize the western area of Kyoto Station: report</p> <p>Future plan to revitalize the western area of Kyoto Station: establishment</p>

\*Copies of a pamphlet about the future plan to revitalize the western area of Kyoto Station were distributed to cultural facilities (such as Umekoji Park, Kyoto Aquarium, Ajiwaikan, and Higashi-Honganji Temple), universities, libraries, shopping districts, companies (such as Kyoto Research Park and Kyoto Station Building) and groups that carry out community development activities, etc. (2,500 copies in total)