



Tokyo
Development
Learning
Center

Palestine Action Plan

IT for Improving Land Administration Services TDD
Tokyo & Kobe, Japan
November 2017



Government
of Japan



WORLD BANK GROUP
Social, Urban, Rural & Resilience

Palestine Key Takeaways from TDD

1. Sharing of information (e.g. central, local government, citizens) → Integrated Information System.
2. Protecting sensitive information, particularly within an integrated system.
3. Sustainability and maintenance of a system.
4. Qualified staff particularly sufficient IT knowledge.
5. Learn from others but cannot “copy + paste” solutions.
6. Public Awareness importance.
7. Do not be discouraged by your challenges.

فئحة معاملة - انتقال الاراضي

صفحة رئيسية بحث فئحة معاملات مراحل المعاملة ادارة تغيير كلمة المرور

جور رقم منشئ: 208 | تاريخ التسجيل: 24/04/2011 | رقم المعاملة/التسجيل: 2011 | على احد مناطق: | اسم الطالب: | اسم الشخص الذي كتمت المعاملة له: | فرع المعاملة: |

إضافة اراضي

القضاء: | المنطقة: | الحوض: | الحي: | رقم القطعة: | رقم المربع: |

عدد الحصص الكلي: | عدد الحصص: |

مساحة اراضي من مساحة اخرى

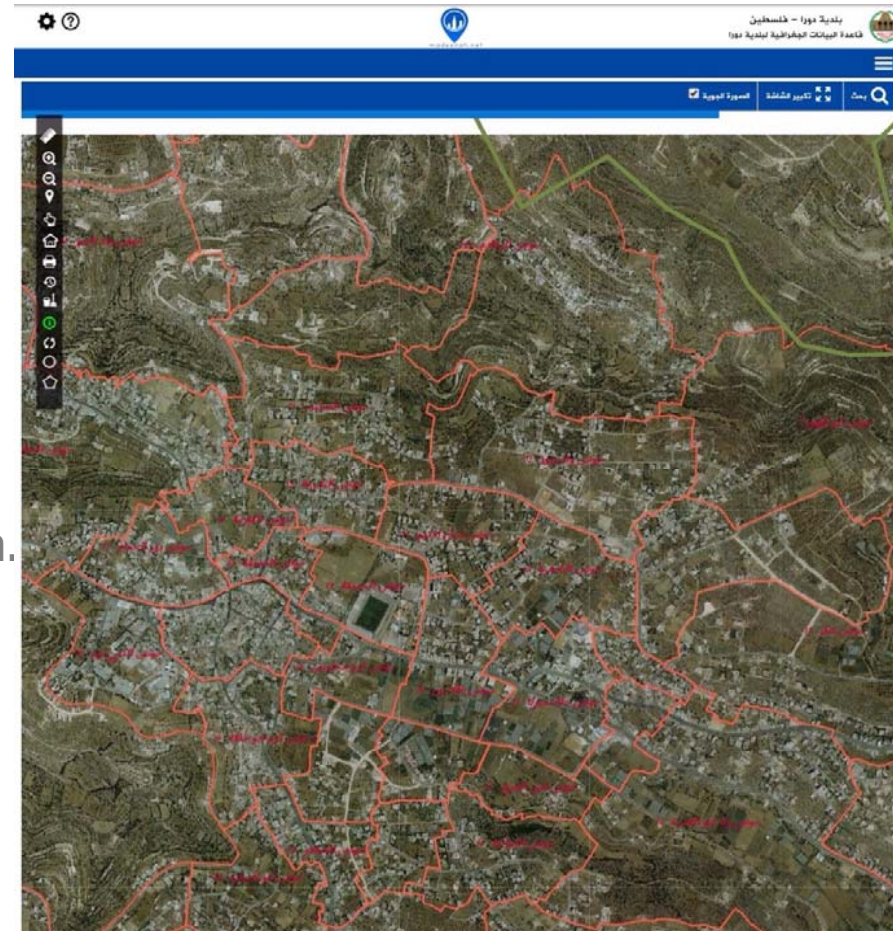
رقم التسجيل	المحافظة	القرية	الحوض	الحي	القطعة	متر	دوم	عدد الحصص الكلي	عدد الحصص المنجزات	تحميل وثائق الارض
1	رام الله والبردة	رام الله	المدينة	الضرة	1	1	1	1	1	3 14/3/2011

معلومات الانتقال

إضافة علاقة

Palestine Accomplishments Needed

1. Full land registration.
2. Full Cadaster.
3. Update legal framework.
4. Effective Land Administration System.
5. Integrated Geospatial Platform
6. Disaster Risk Management Plan.



Palestine Actions to be Taken

- Short-term:
 - National Action Plan → each PMO, PLA, LWSC, MoLG, and MoF (Ptax)
 - Add M&E unit, surveying engineers, & more qualified legal experts by LWSC
 - Establish geodetic reference framework (CORS) with permanent GPS stations by PLA
 - Digitizing existing maps and data conversion of land certificates by PLA
 - Computerized Land Registration System (CLRS) → mechanism to link spatial and non-spatial data from LWSC to PLA
 - Encourage Agencies to sign MoUs for sharing data by PMO, PLA, LWSC, MoF, and LGUs
- Medium-term:
 - Training on legal land framework → add more Land Settlement judges by LWSC.
 - Qualified IT Unit in LWSC by LWSC.
 - CLRS → link data to GeoMolg, GDPT (Ptax), and LGUs.
- Long-term:
 - Map rights in Area C by LWSC.
 - Public key infrastructure (Electronic signature) to shift from paper to electronic transaction by Ministry of Telecom and IT
 - CLRS → link data to citizens, private sector, etc. by GeoMoLG.
 - Law to share information by legislature.

Palestine Barriers to Implementation of AP

1. Outdated legal framework → seeking WB to support update of draft laws.
2. Fragmentation of data, lack of meta-data, uneven data format → platform established
3. Quality Assurance standards for IT Framework for sector agencies.
4. Lack of financial resources → cost-sharing with LGUs (not sufficient to expand services).
5. “Independent” thinking by departments within agencies.
6. External: Access restrictions (Area C), lack of 3G network.



Palestine - Support Needed

- World Bank Land Team:
 - Update of the legal framework.
 - Training for legal experts on land dispute resolutions.
 - Quality Assurance standards for cooperation with the Private sector for land registration and digitizing of existing maps and data.

- TDLC Program (Japanese support from Institutions, Private Sector, etc.)
 - Quality assurance standards, TORs for CORS network, integrated systems, and standard data guidelines.
 - Utilization of cloud technology for the land sector.
 - Business continuity plan.

- Knowledge Products (Case Studies, Policy Notes, etc.)
 - Policy note on sharing of information.
 - Case studies on establishing a national DRM framework.

