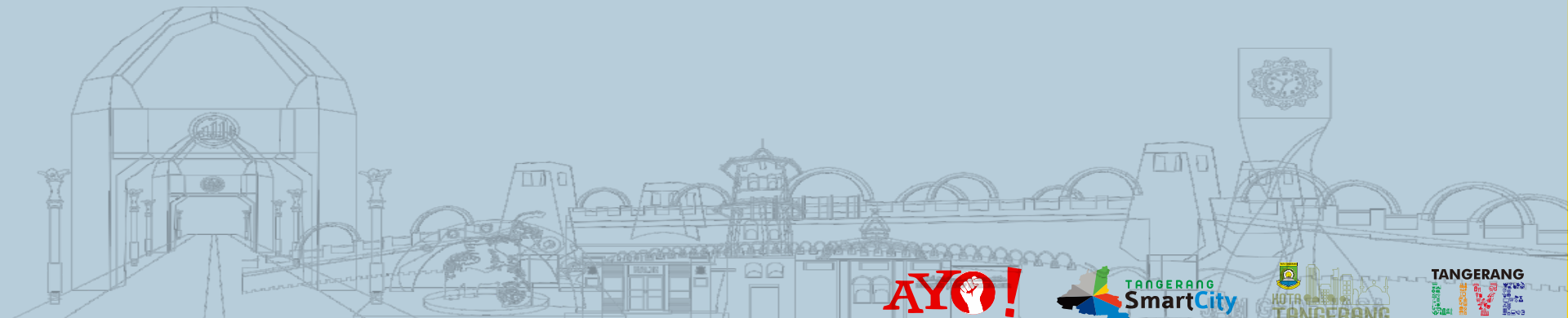




# Urban Water Related Issues and Their Potential Supporting Programs

Study Case : **TANGERANG**



# SEKILAS TANGERANG

Tangerang in A Glance



## Keunggulan Kota City Overage

Letak yang strategis dan aksesibilitas transportasi  
*Strategic location and transportation accessibility*

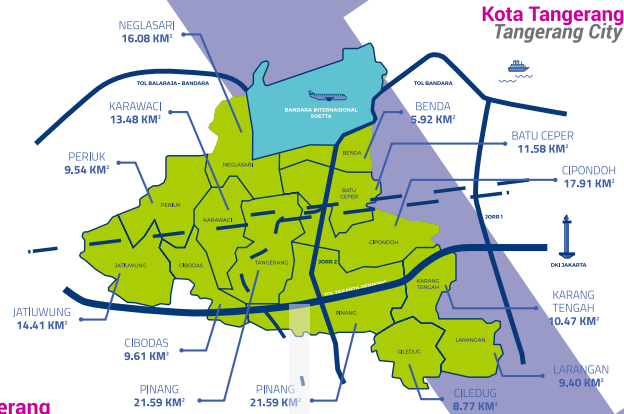
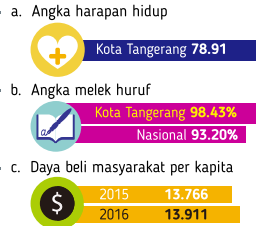


## Profil Umum Kota Tangerang Tangerang City Profile

Indeks Pertumbuhan manusia Kota Tangerang



Rincian indikator IPM



Jumlah Penduduk / population  
1,667,661

Penambahan / increase  
0,24%

Penduduk usia produktif  
1.269.976 jiwa atau sekitar 76,15%  
*working age population*  
1.269.976 people or about 76,15%.

Laju pertumbuhan ekonomi  
Kota Tangerang 5.50%  
Nasional 5.02%

sumber : LKPI 2017 (Bappeda)





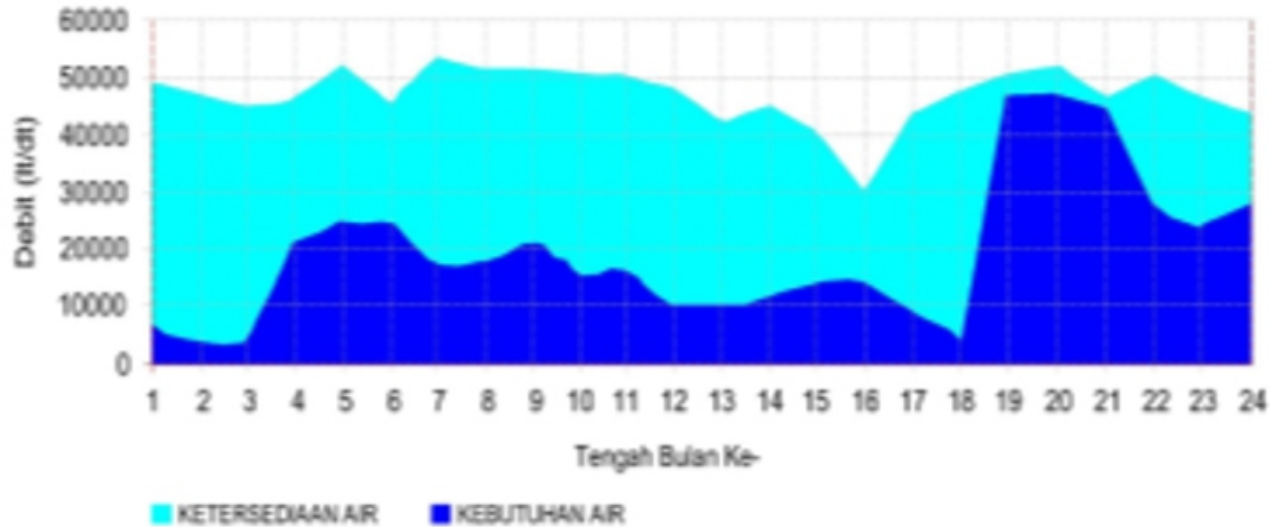
## Sungai Cisadane *Cisadane River*



- Tangerang City area crossed by Cisadane River as a water sources for water supply
- Cisadane River water quality is not improved within the last 7 years
- Cisadane River (within Ciliwung River, Citarum River, dan Progo River) are included for priority river to be addressed by the Ministry of Environment
- Study result of Strengthening Environmental Management Capacity of Local Governments in Indonesia (SEMAC) JICA JAPAN, found that 84% pollution load come from domestic activities, industry 14%, and other activities 2%



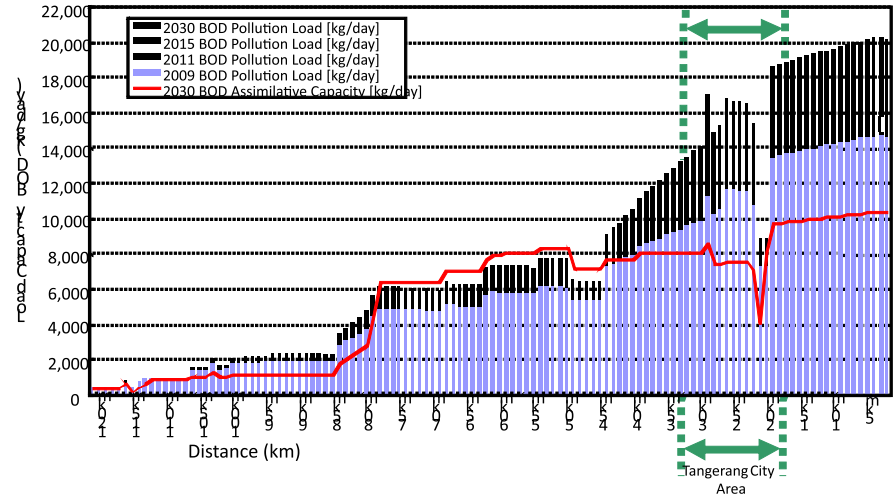
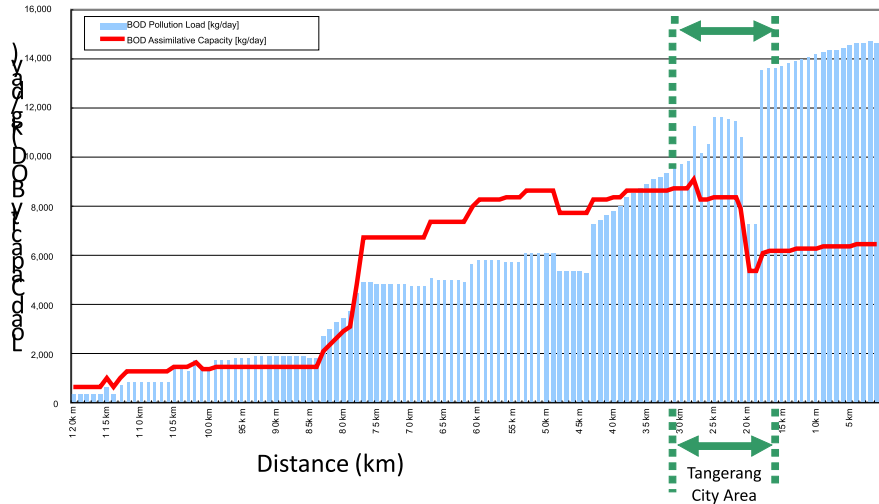
### PEMANFAATAN AIR SUNGAI CISADANE ( Eksisting)



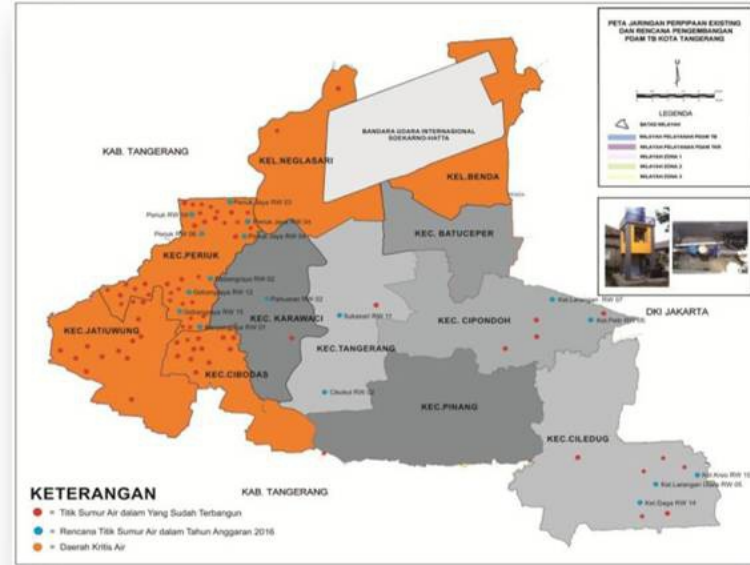
Minimum discharge 1,74 m<sup>3</sup>/s

Cisadane river is used for irrigation 25.893 Ha covering DKI Jakarta, Kota Tangerang dan Kabupaten Tangerang. This are decline because of land use change, 40.663 Ha in 1930, 30.926 Ha in 1993, 23.847 Ha in 2004 and 23.498 Ha in 2006

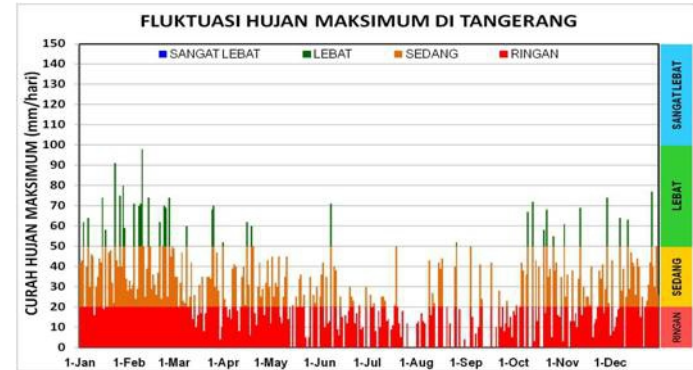
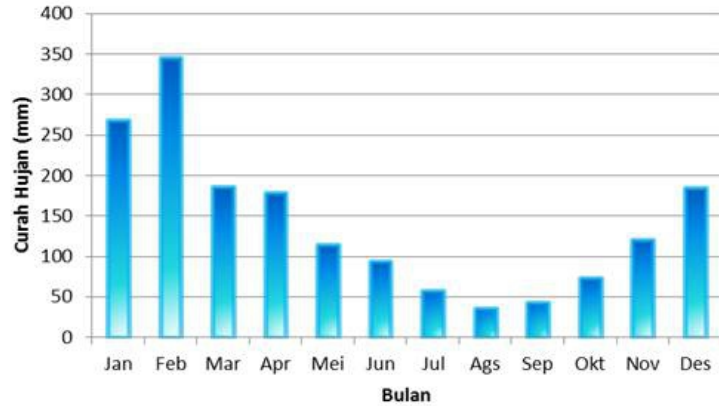
# River Water Quality: POLLUTION LOAD AND CAPACITY OF CISADANE RIVER



# Ground Water Condition



# Hidrology Conditions



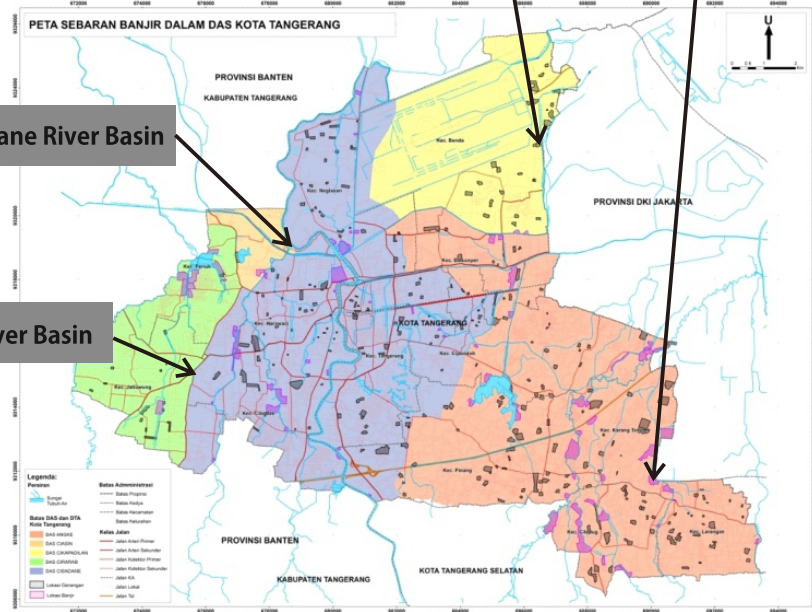
The Lowest average rainfall is 35,8 mm mainly in August and The Highest average rainfall is in February (345,7 mm)

Cikapadilan River Basin

Angke River Basin

Cisadane River Basin

Cirarab – Ciasin River Basin

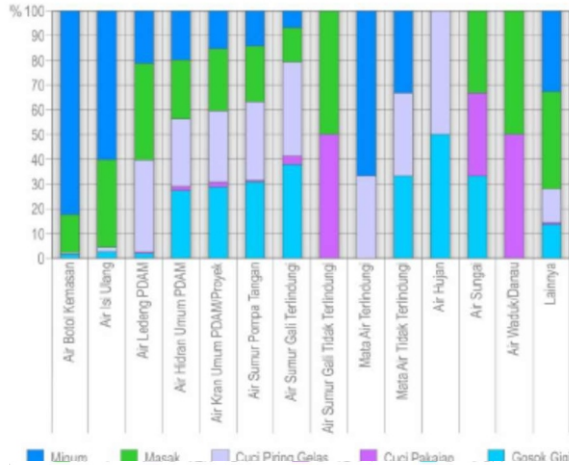


# Hidrology Conditions

Watershed In Tangerang City Divided into 4 Main Areas:

- Cisadane River Basin
- Angke River Basin
- Cirarab – Ciasin River Basin
- Cikapadilan River Basin



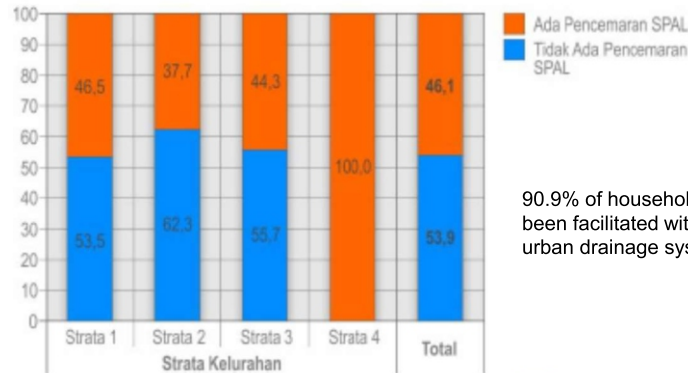


Based on the results of the EHRA study, it can be seen that in the city of Tangerang there are still around 7% of the people whose drinking water management has the potential to be contaminated when handling water or drinking water storage containers. While 93% of the community is safe in managing drinking water.

# Sanitation Profile



Solid Waste has been managed (85,30%)



90.9% of households has been facilitated with sewer urban drainage system.

# Sanitation Profile



**Total Drinking Water Connection 47.560 SL,  
Piping System Coverage 28,1%, Non-Piping  
System Coverage 19%**



**90.9% of households has been facilitated  
with sewer urban drainage system.**

## COMMUNITIES-BASED FOR INUDATION REDUCTION



[www.tangerangkota.go.id](http://www.tangerangkota.go.id)

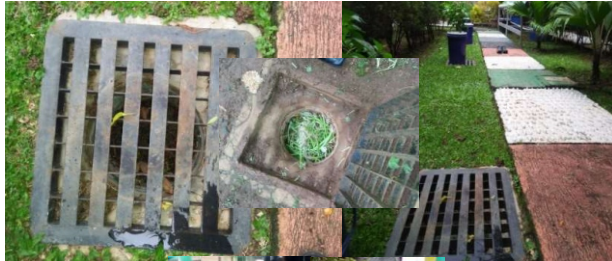


## COMMUNITIES-BASED FOR INUDATION REDUCTION



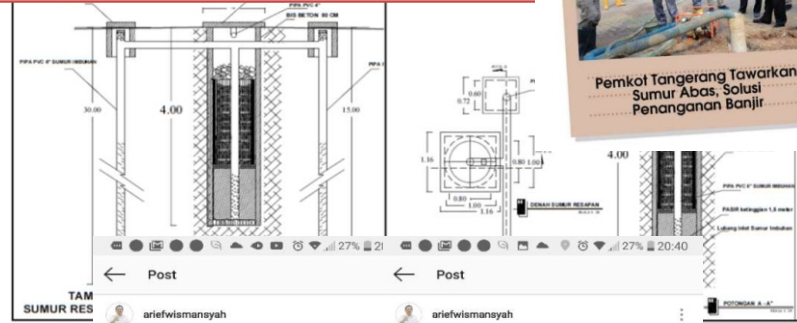
Construction of  
Infiltration wells called  
biopore “Jumbo” impact

Tech.	2017	2018
Biopore “Jumbo”	698	875



**Before**  
Kampung Markisa, Kel.. Pasar Baru  
Kec. Karawaci

Construction of Infiltration wells called “Sumur Abas”  
480 Sumur Abas Will be constructed in 2019



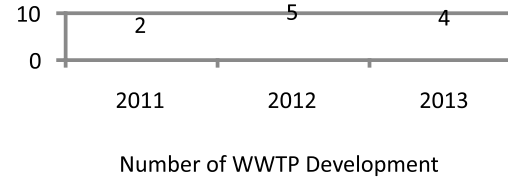
361 likes  
ariefwismanisyah Saat ini Kita sedang berinovasi membuat sumur resapan di daerah2 yg tergenang air ketika hujan , untuk menghilangkan genangan, kami berusaha memproses airnya agar menjadi air yg jernih dan produktif!  
Kita berusaha membuat yg tadinya masalah, menjadi berkah  
Doain ya  
#Kotatangerang #jjs #jalanjalansore #AW  
View all 10 comments  
3 HOURS AGO · SEE TRANSLATION



# SMALL SCALE DOMESTIC WWTP AT GREEN VILLAGE LOCATION

NO	LOCATION	DISTRICT	YEAR
1	Perumahan Bugel Mas Indah	Karawaci	2011
2	Perumahan P dan K	Cipondoh	2011
3	Perumahan Pondok Surya	Karang Tengah	2012
4	Perumahan Pinang Griya	Pinang	2012
5	Perumahan Ciledug Indah 1	Karang Tengah	2012
6	Perumahan Benua Indah	Karawaci	2012
7	Perumahan Buana Permai	Cipondoh	2012
8	Perumahan Cipondoh Makmur	Cipondoh	2013
9	Perumahan Pondok Bahar RW.3	Karang Tengah	2013
10	Perumahan Puri Megah RW.11	Cipondoh	2013
11	Perumahan Kunciaran Mas Permai	Pinang	2013

## The Development of WWTP for Domestic





# BEDAH RUMAH KOTA TANGERANG

SEBELUM

SESUDAH

Total  
**5.872**  
Rumah

2015  
**1.107**  
Rumah

2017  
**2.314**  
Rumah

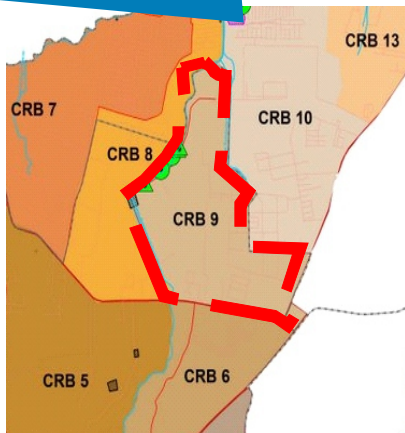
2016  
**1.451**  
Rumah

2018  
**1.000\***  
Rumah

REHABILITATION OF SLUM AREA  
BY IMPROVING HOUSE AND PREPARING TOILETS

SEBELUM

SESUDAH



Wilayah drainase	Kode Saluran	Q Saluran m <sup>3</sup> /s	L Saluran m	S <sub>0</sub> (slope) %	n	V m/s	R m	A m <sup>2</sup>	b m	h M	Dimensi Saluran B(m) H(m)
Jalan Keroncong	CRB09 - KR - 01	0,91	1248,31	0,02%	0,015	0,45	0,48	2,00	1,00	1,00	1,00 1,30
Jalan Pandawa	CRB09 - KR - 04	0,50	626,854	0,02%	0,015	0,39	0,41	1,30	0,80	0,80	0,80 1,10
Perumahan	CRB09 - KR - 02	0,18	251,44	0,02%	0,015	0,30	0,32	0,60	0,55	0,60	0,55 0,90
Perumahan	CRB09 - KR - 03	0,35	437,966	0,02%	0,015	0,36	0,38	1,00	0,70	0,70	0,70 1,00
Pabrik	CRB09 - KR - 05	0,14	149,94	0,02%	0,015	0,29	0,30	0,50	0,50	0,50	0,50 0,80

Ket. Penamaan Kode Saluran :

CRB09 - KR - 01

Wilayah Drainase

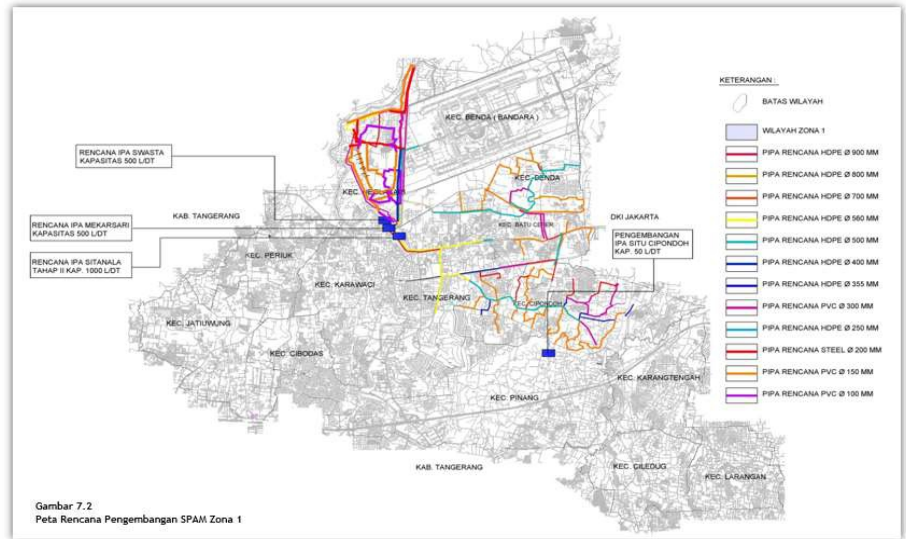
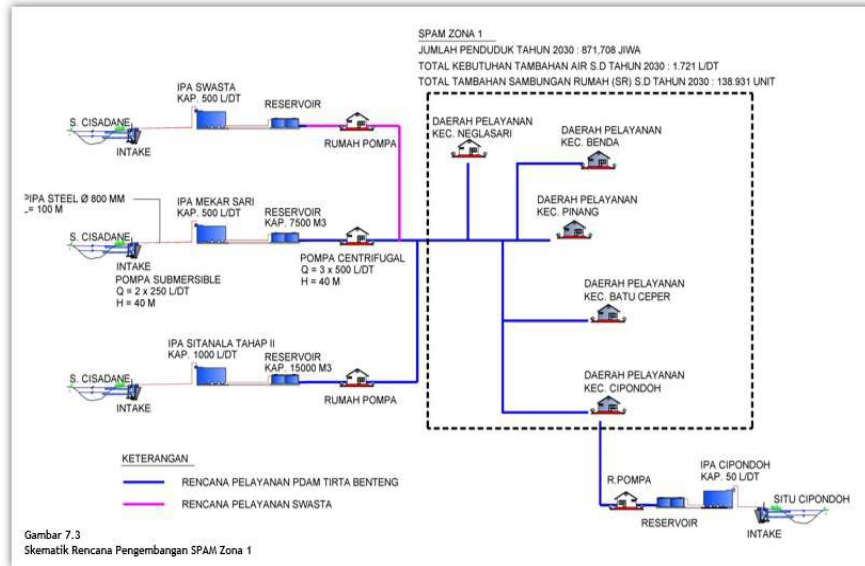
Nama Saluran

## Flood Control Measures

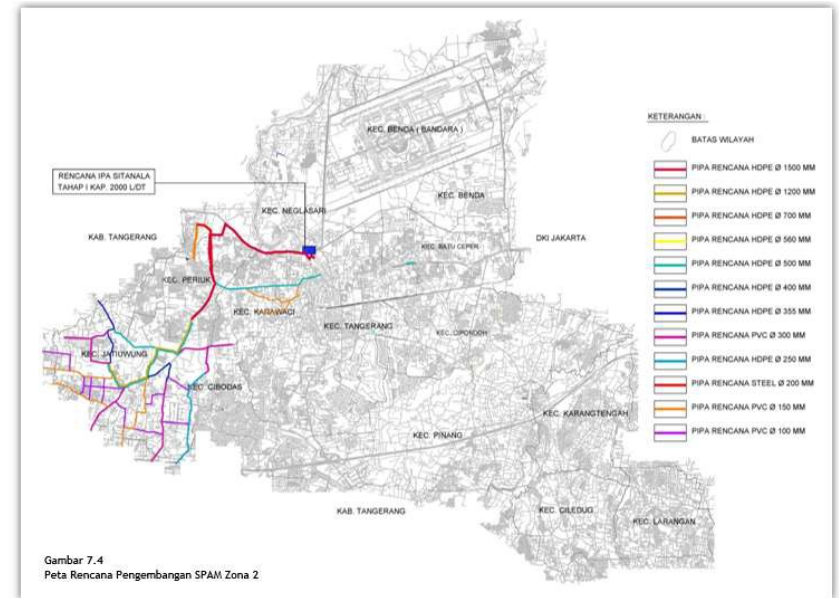
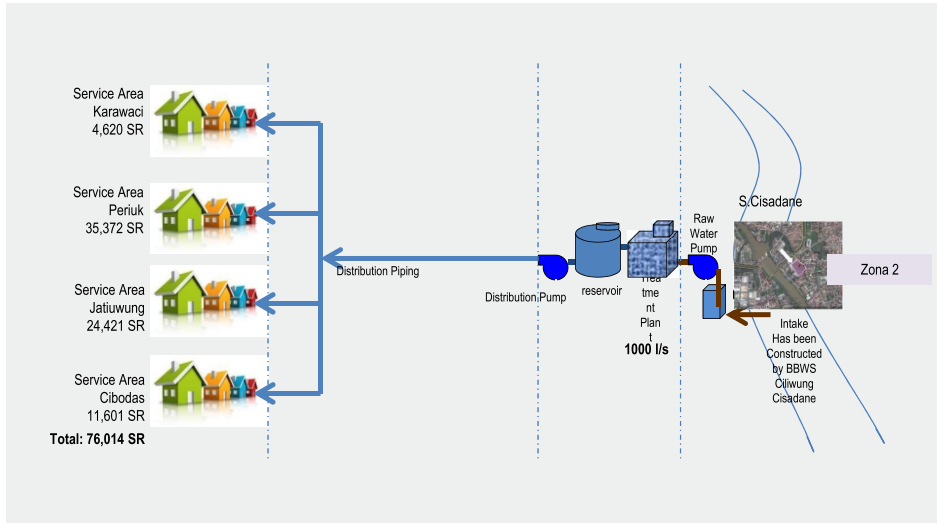




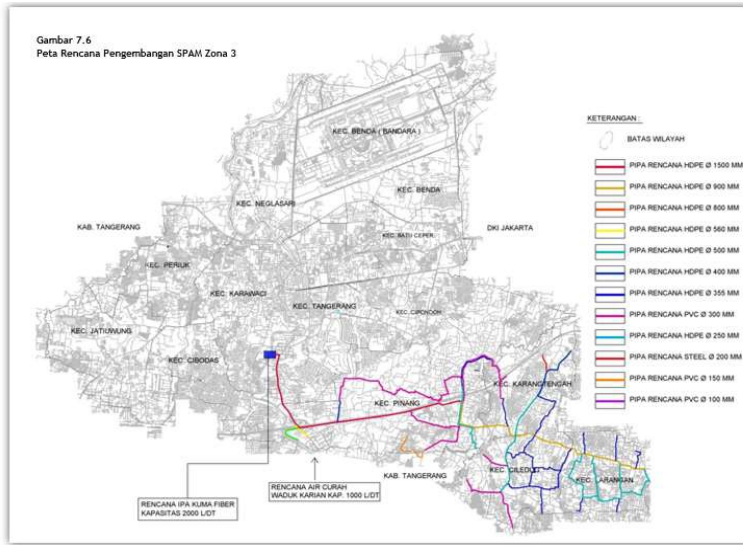
# DEVELOPMENT PLAN OF DRINKING WATER SUPPLY SYSTEM zone 1



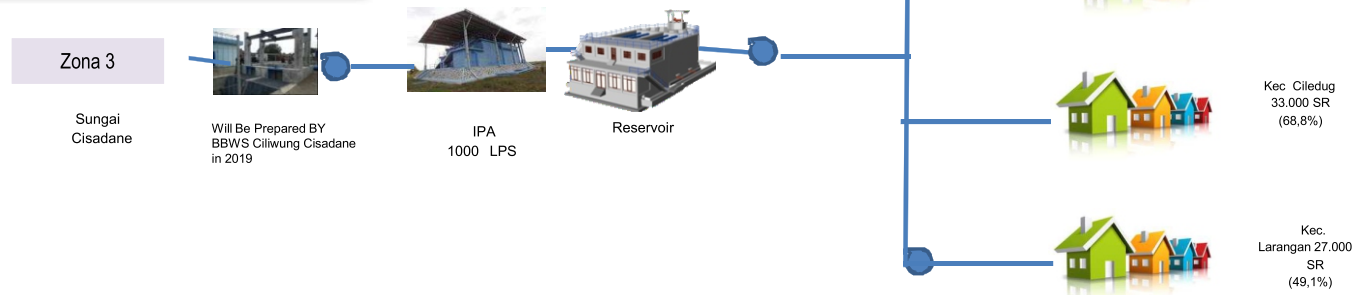
# DEVELOPMENT PLAN OF DRINKING WATER SUPPLY SYSTEM zone 2



Gambar 7.6  
Peta Rencana Pengembangan SPAM Zona 3



# DEVELOPMENT PLAN OF DRINKING WATER SUPPLY SYSTEM zone 3



**TANGERANG**  
**AYO!**

**THANK YOU**

