



**PROGRAMA
LAGOAS
DO NORTE**

**TERESINA – IMPROVING
QUALITY OF LIFE AND
MUNICIPAL GOVERNANCE
PROGRAM – PHASES I & II**



Resettlement Guidelines – PLN (Programa Lagoas do Norte)

**The resettlement guidelines are based on
the Social Safeguards.**

Operational Policy OP 4.12

Resettlement Guidelines – PLN

- Ensuring that the largest number of families remains in the area of intervention, minimizing the number of properties to be expropriated;
- Ensuring that different service options be offered;
- Ensuring the improvement of housing conditions through residential improvements
- Ensuring the possibility to maintain income;
- Ensuring the payment of indemnities to compensate the value of the property including all previous improvements;
- Ensuring the provision of social services: education, health, social assistance, public transport, etc .;
- Constant objective to minimize social and / or environmental impacts on the population.



Photo: Canal of São Joaquim (Before/After)



**PROGRAMA
LAGOAS
DO NORTE**

Involuntary Resettlement Plan



Involuntary Resettlement – OP 4.12

OBJECTIVES

- ❖ **Avoid or minimize the situation by exploring all alternatives.**



Study all Scenarios / Project Planning Instrument



- ❖ **Resettlement – Development Program.**



Provide opportunities for participation and decision to affected people.



Improve living conditions or, at least, maintain the pre-resettlement situation.

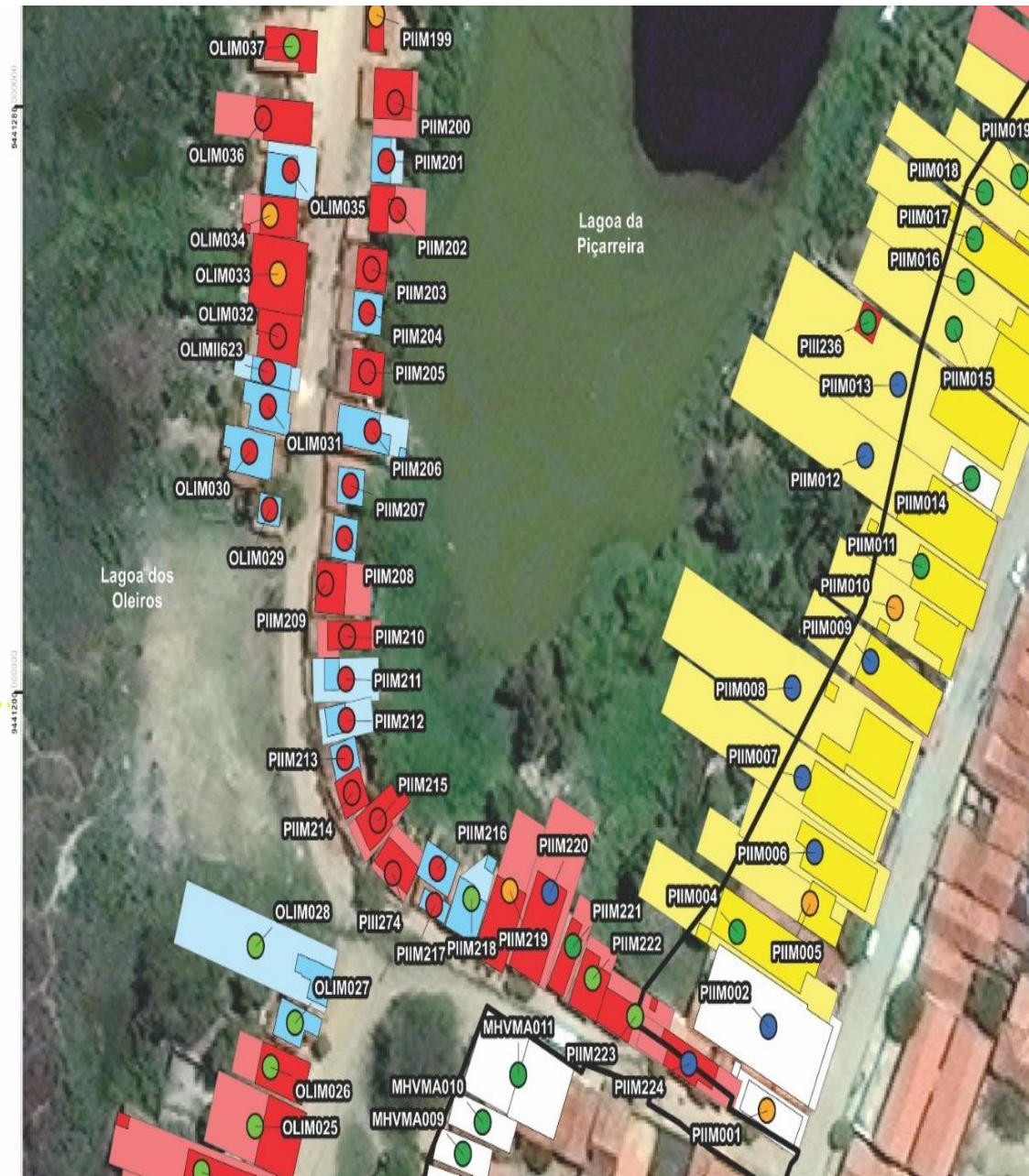
Involuntary Resettlement – OP 4.12

Aim to transform:

- Affected people into beneficiaries;
- Losses into benefits; and
- Resettlement into development.

Involuntary Resettlement Plans (IRP)

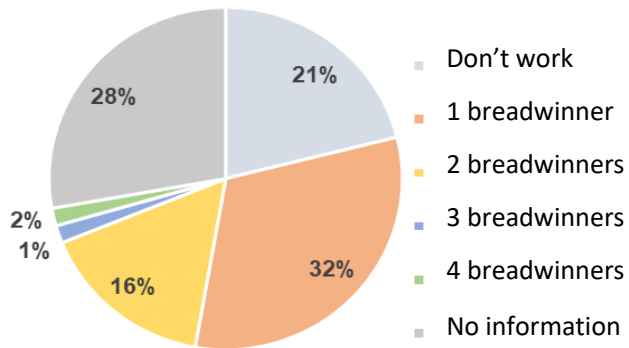
- Census registration;
- Notification and identification of property;
- Affected area;
- Family count.



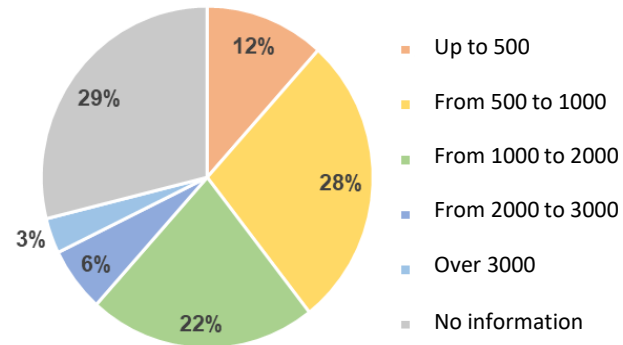
Resettlement Plan – IRP

- Socio-economic diagnosis of the intervention areas; and
- Evaluation reports.

Breadwinners



Family income



Current Situation



Urbanization Project

Resettlement Plan – IRP



Figure 1. Example of a standard property estimated at 'Below Minimum' level. Left: façade of the building. Right: external improvised 'bathroom'.

Resettlement Plan – IRP



Figure 2. Example of standard property estimated at 'Normal' level. Left: façade. Right: room with floor tile in kitchen and other areas with water.



Figure 3. Example of a standard property estimated at 'Minimum' level.



Figure 4. Example of a standard property estimated at 'Low' level. Left: façade. Right: bathroom without tile.

Resettlement Plan – IRP

Planned solutions: Resettlement and Compensation.

For the **Resettlement**, the following options are offered:

- Resettlement in PLN housing;
- Resettlement in PMCMV housing; and
- Monitored resettlement.

The option of **Compensation** offers the following options:

- Compensation for property owners who are affected completely;
- Compensation for property owners who are affected partially;
- Compensation for service;
- Housing assistance; and
- Temporary relocation.

Operationalization of the Resettlement Process

- Carried out by the Socio-Environmental Project Unit (Multidisciplinary team composed of municipal agencies and social monitoring entities)

1. Sectoral meetings with the community to present the PLN;



Operationalization of the Resettlement Process

2. House visit to invite the families to negotiate



Operationalization of the Resettlement Process

3. Individual social accompaniment for negotiation with the families



Operationalization of the Resettlement Process

4. Mediation meeting – OAB and PMT



Ensure transparency of the negotiation process and legal assurance for compliance with the agreement between the family and PMT / PLN.

Operationalization of the Resettlement Process

5. Social accompaniment of the families:

- Individualized for families benefiting from the program;
- Collective, through:
 - Committees to accompany resettled families;
 - Works monitoring committee;
 - Lagoas do Norte Committee;
 - Forum of the Lagoas do Norte Program;
- Articulated with public administration entities, private institutions and social organisms;

Residential Area Zilda Arns



Programa Lagoas do Norte | Phase 2

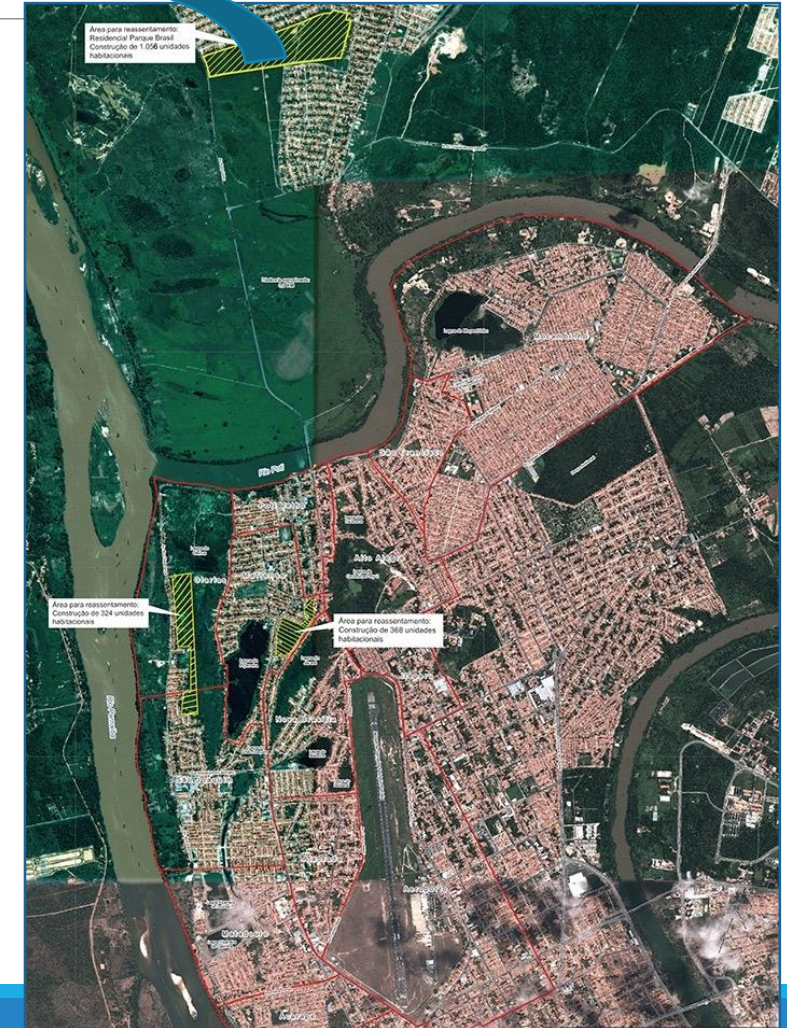
Projects for resettlement lots – Parque Brasil



Construction of a Residential area for 1022 families

Number of houses: 350

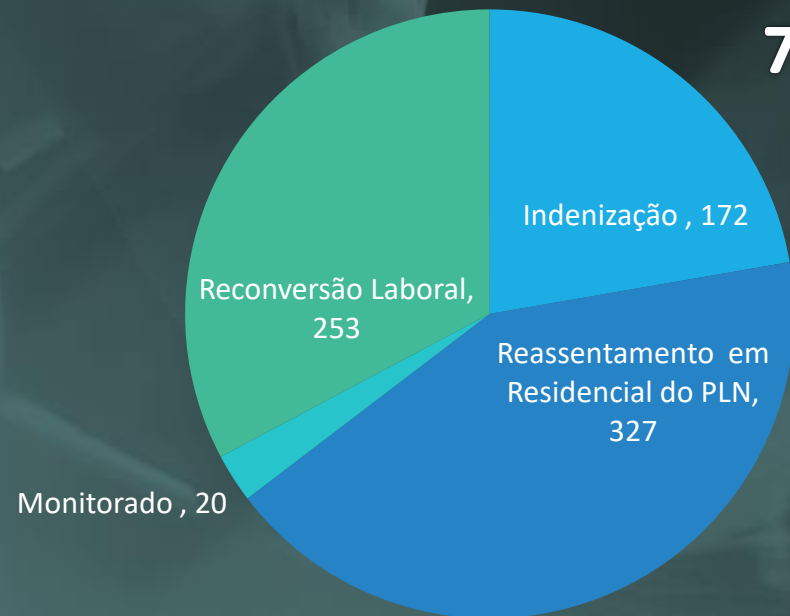
Number of apartments: 672



RESULTS of the Resettlement

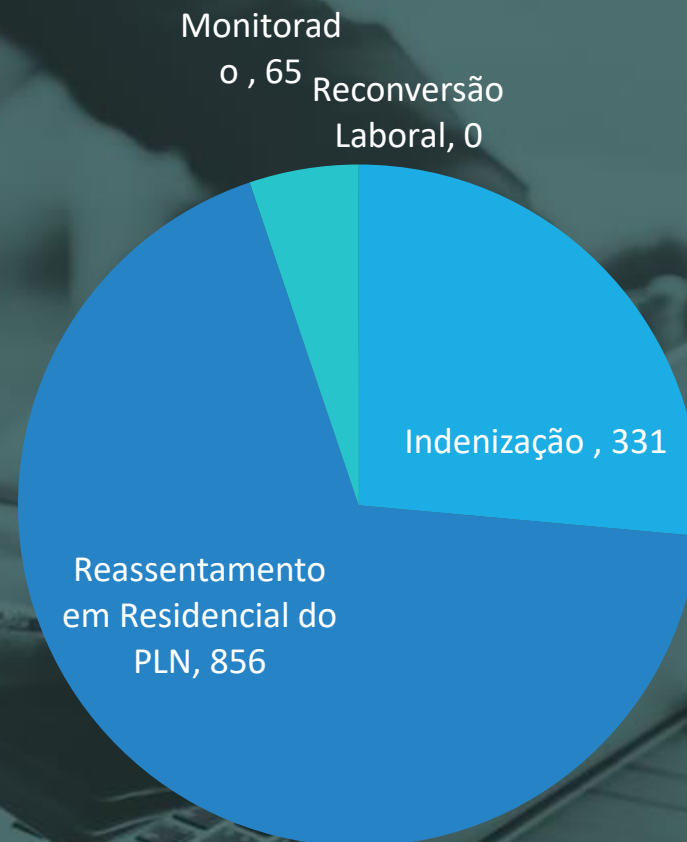
IMPLEMENTED

**Total:
772**



TO IMPLEMENT

**Total:
1252**





FÓRUM BRASILEIRO DE
SEGURANÇA PÚBLICA

Diagnosis of Violence in Teresina – Crime and violence



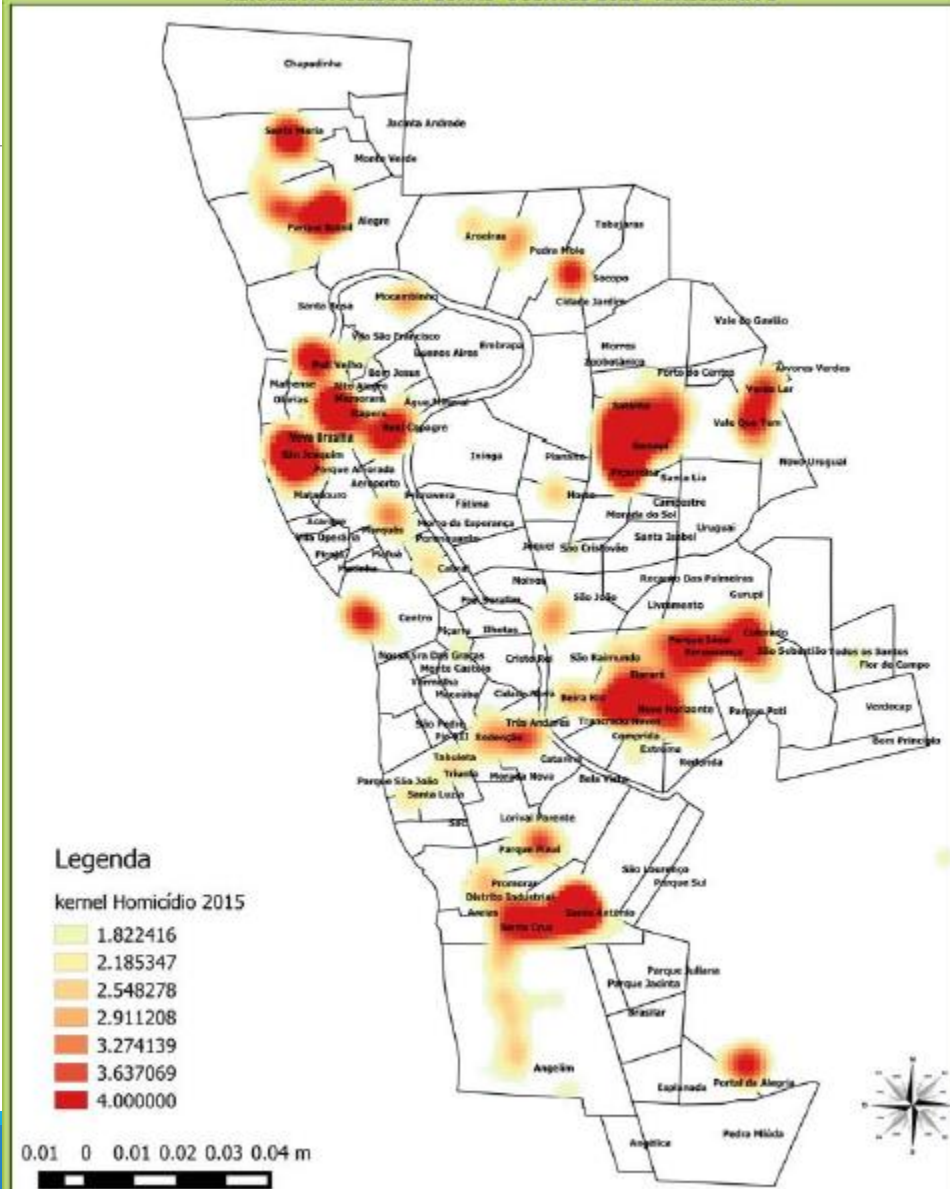
Banco Mundial



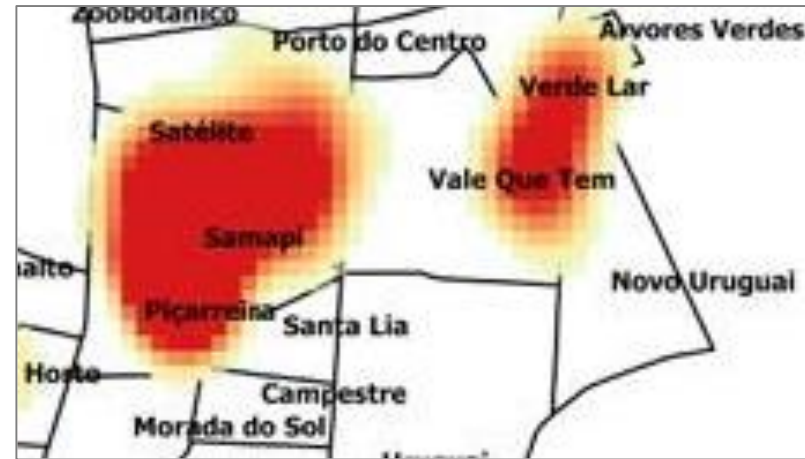
Prefeitura de
Teresina



KERNEL HOMICÍDIOS ZONAS OQUENTES 2015 TERESINA/PI



Data on Violence in Teresina

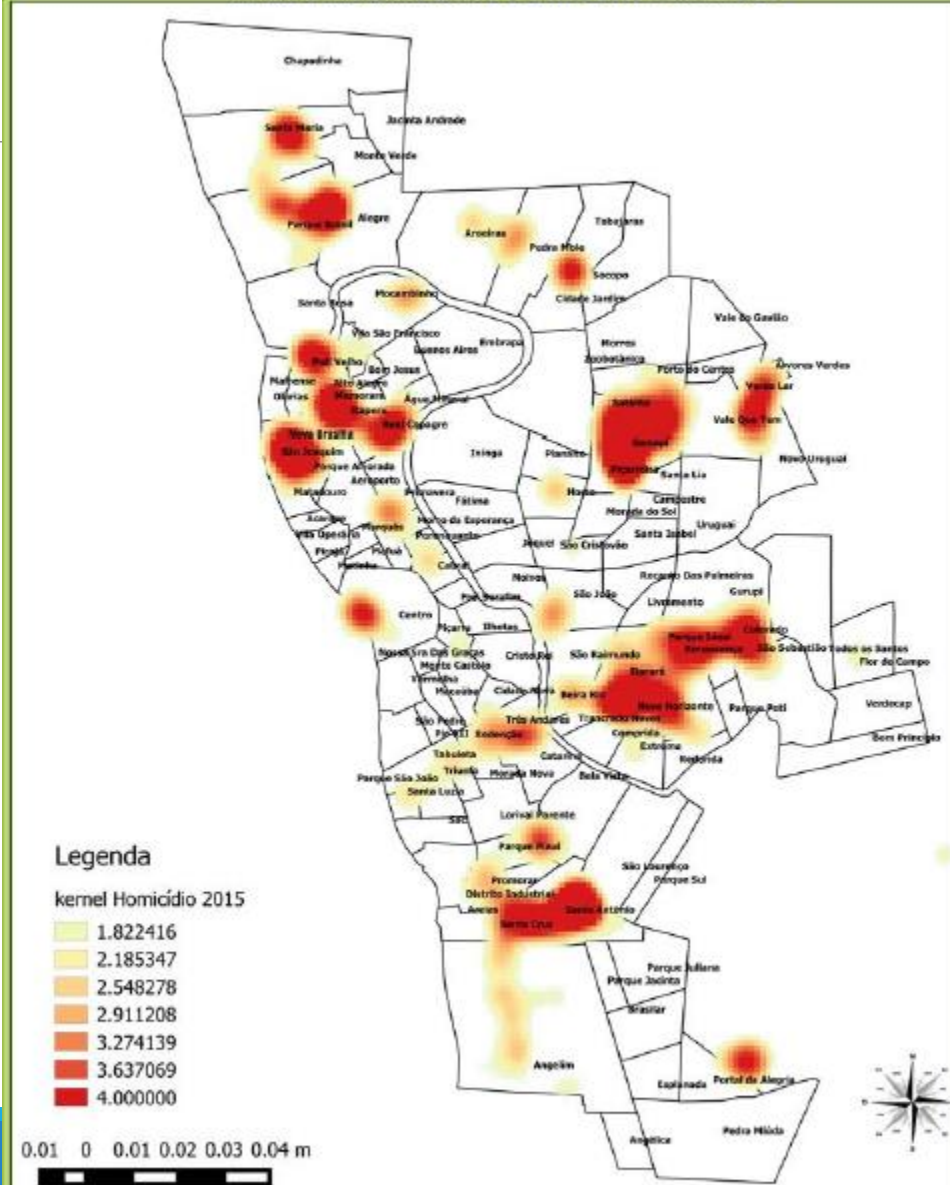


Neighborhoods: Satélite; Piçarreira; Vale que Tem.

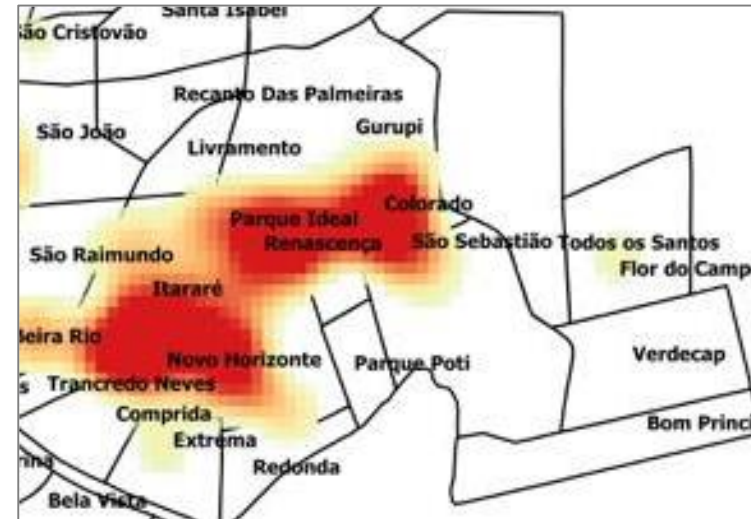
Homicides per neighborhood



KERNEL HOMICÍDIOS ZONAS QUENTES 2015 TERESINA/PI

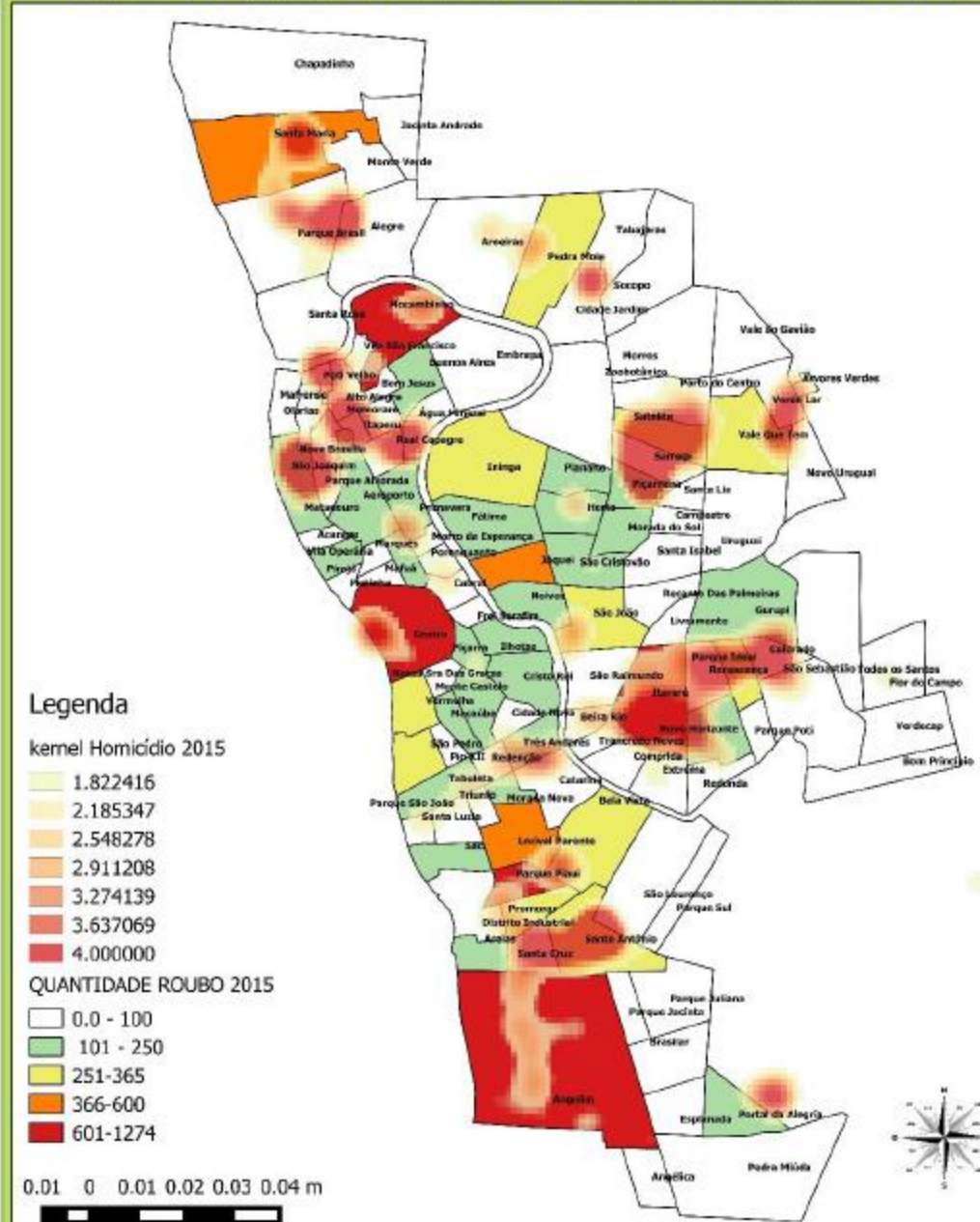


Data on Violence in Teresina



Neighborhoods: **Grande Itararé Dirceu I e II;** **Renascença;** Redonda; Gurupi/Alto da Ressurreição; Extrema; Todos os Santos; Novo Milênio

Homicides per neighborhood



Data on Violence in Teresina

Red areas have more homicide occurrences. Colors under these areas are the occurrences of theft.

Homicides and thefts by region

Steps forward to improve the situation in Teresina

- Elaboration of a participatory diagnosis of violence;
- Creation and preparation of the Municipal Guard;
- Elaboration of a Municipal Safety Plan (Vila Bairro Segurança);
- Structuring of an Observatory on Violence;
- Realization of the Gender Diagnosis;



**PROGRAMA
LAGOAS
DO NORTE**

Community Involvement



Community Involvement

1. Ownership from the population in resettled areas:

i. Cultural aspects:

i. Teatro do Boi;

ii. Praça dos Orixás;

iii. Encontro dos Rios;

iv. Community Events

(Parque Lagoas do Norte) ;

v. Grafitti Art;



Praça dos Orixás



Graffiti

ii. Social Aspects:

- i. Improvement of public facilities (schools, Health units and Social Assistance units);
- ii. Gender diagnosis;
- iii. Vila Bairro Segurança;



Walk for Peace

iii. Environmental Aspects:

i. Environmental Education Activities;



Lecture on water quality



Planting seedlings



Obrigado! Thank you!

www.teresina.pi.gov.br

www.semplan.teresina.pi.gov.br/lagoas-do-norte

www.facebook.com/LagoasDoNorte

www.twitter.com/prefeitura_the

Secretaria Municipal de Planejamento e Coordenação
Unidade de Gerenciamento do Programa Lagoas do Norte
Rua Pernambuco, 1446, Vila Operária.
Teresina-PI. CEP: 64003-267
Fones: (86)3215-7525/3215-7524
E-mail: lagoasdonorte@gmail.com



**PROGRAMA
LAGOAS
DO NORTE**