

# <ROMANIA - PS5> Action Plan

Planning for Safe, Inclusive and Resilient Cities TDD  
Tokyo, Osaka - Japan  
April 23-27, 2018



JAPAN GOV  
THE GOVERNMENT OF JAPAN



WORLD BANK GROUP  
Social, Urban, Rural & Resilience



# <ROMANIA – PS5> Key Takeaways from TDD

1. Every country faces similar challenges
2. The power of quality public infrastructure to improve social outcomes
3. The importance of spatial planning in the development of large cities
4. The importance of addressing social issues before they spiral out of control
5. An aged population will be one of the major social crises for Romania





# <Romania – PS5> Accomplishments Needed

1. Urban Regeneration of Ferentari Neighborhood -> 8

- Tackle social exclusion
- Urban spaces renewal

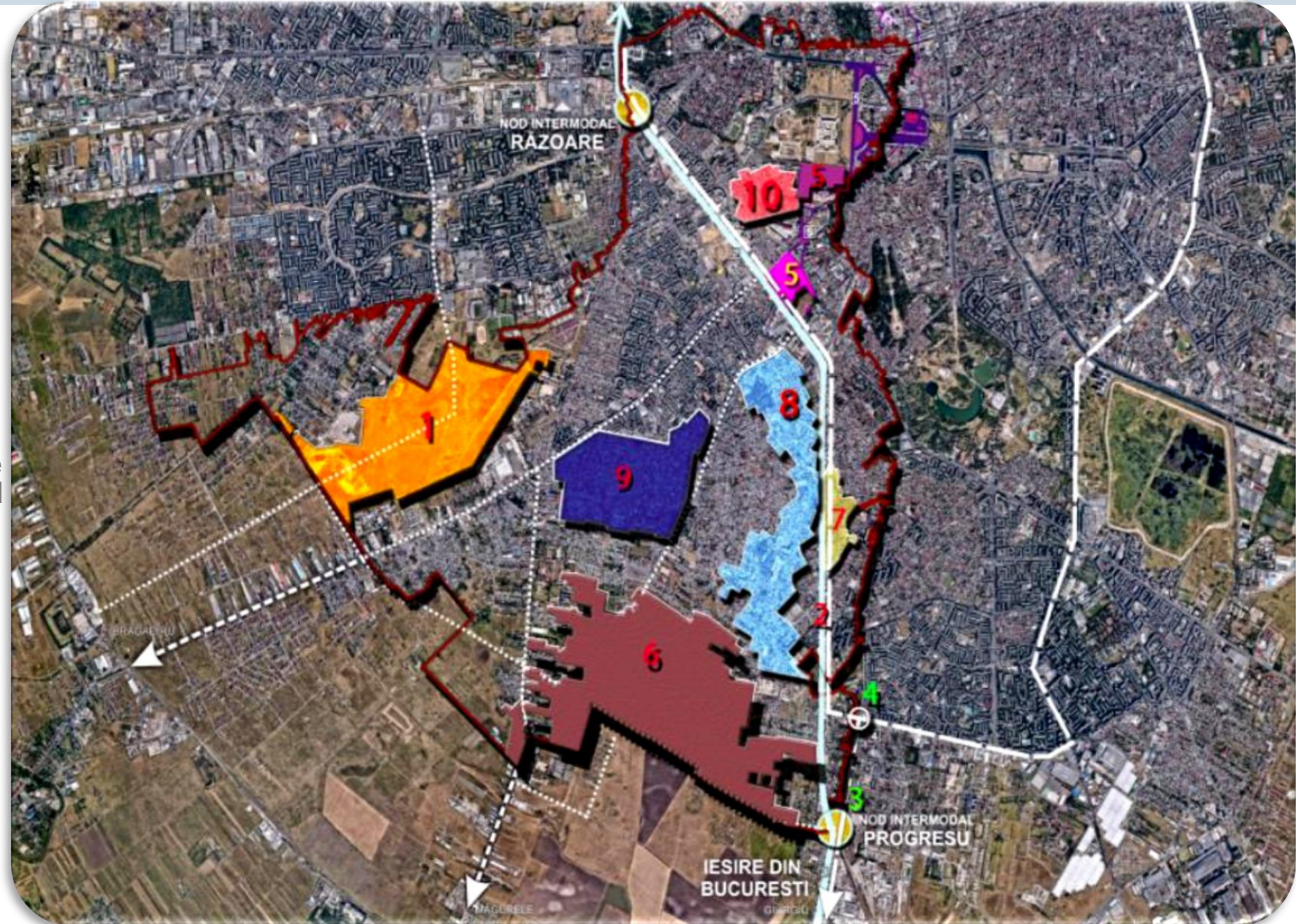
2. Antiaeriana Urban Development -> 1

- Public investments for infrastructure works
- Attract private investors for the biggest real estate development in Romania and one of the biggest in south-eastern Europe

3. Bucharest South (Magurele) Development -> 6

- Attract private investors for real estate development in the proximity of ELI-NP (the most advanced research facility in the world focusing on the study of photonuclear physics and its applications - <http://www.eli-np.ro>)

4. Increasing urban mobility and raising Quality of Life in District 5
5. Developing Spatial Plan for District 5



# <ROMANIA – PS5> Actions to be Taken

## Short-term:

- Prepare list of priority interventions in the Ferentari Neighborhood, by District 5 Team together with World Bank team, and vested stakeholders, using citizen survey of needs and priorities
- Identify major territorial interventions for the Antiaeriana Area and the Bucharest South Area (Magurele), by District 5 Team together with World Bank team, TDLC team, and vested stakeholders

## Medium-term:

- Prepare dossier for participation at the largest investors convention in Europe – Expo Real, by District 5 Team and World Bank team
- Finalize spatial plan for the district, by District 5 Team with assistance from the World Bank team and the TDLC team
- Pro-actively engage investors to create new jobs and opportunities in the district, by District 5 Team, World Bank team, and TDLC team
- Identify urban design solutions for key public spaces in the district, to improve quality of life and social outcomes, District 5 Team, World Bank team, and TDLC team

## Long-term:

- Pro-actively respond to, and address issues of marginalization and social inclusion in the district, by District 5 team
- Pro-actively focus on creating jobs and opportunities and making the district more attractive for inhabitants, by District 5 team





# Barrier/Challenge of Implementation of Plan

1. **Inertia of poor and marginalized people in the district** -> *Japanese experience indicates that patience and long-term planning is key.*
2. **Poor image of few distinct areas in District 5** -> *Important to work on an image of a municipality that is open for business.*
3. **The bureaucracy sometimes creates problems in coordinating with the surrounding administrations and Bucharest City Hall** -> *Osaka experience shows that persistence in engaging multiple stakeholders pays off eventually.*
4. **Lack of experience with quality urban design in major projects in the last 30 years in Romania** -> *Use TDLC resources to raise quality of urban design*
5. **Need to mobilize investments** -> *maintain an open dialogue with all relevant stakeholders*





## <ROMANIA – PS5> Lending and TA Active or Needed

- Technical Assistance Work Planned (currently active – partnership with WBG):
  - Capital Investment Planning and management -> \$300,000
  - Municipal Asset Management and Urban Regeneration -> \$900,000
- Investment Work Planned:
  - Urban Regeneration of Ferentari Neighborhood -> \$300 mil.
  - Development of Antiaeriana Area -> \$6 bil.
  - Development of Bucharest South Area -> \$22 bil.





# <ROMANIA – PS5> Support Needed

- World Bank:
  - On-going 3-year technical assistance program
- TDLC Program (Japan)
  - Assistance with attracting Japanese investors, to create jobs and opportunities
  - Input on urban design guideline and spatial planning
  - Resource people on key issues (e.g. Prof. Terakawa on social inclusion issues)
- Knowledge Products (Case Studies, Policy Notes, etc.)
  - Urban design guidelines
  - Shinjuku urban regeneration case study

