



INDONESIA Action Plan

Technical Deep Dive on Seismic Risk and Resilience
March 12 – 16, 2018
Tokyo, Sendai and Kobe



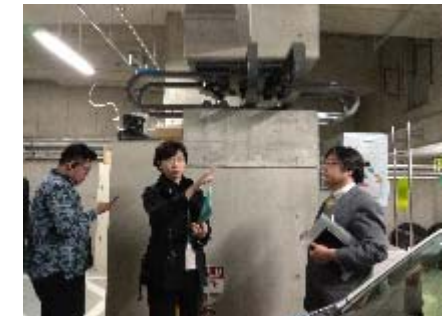
Indonesia Key Takeaways from TDD



GFD RR
Global Facility for Disaster Reduction and Recovery

Tokyo
Development
Learning
Center

1. **Never Forget the History** and impacts of major disasters in our country.
2. **Data and information system**, and **strong capacity** to conduct analysis, is necessary for accurate qualitative and quantitative risk assessments.
3. The importance of **law enforcement** related to building regulations.
4. Need to develop or strengthen **capacity and awareness** of municipal/city governments and local communities.
5. Need to strengthen **communication and coordination** among line ministries, between central and local government, and between government, university, and international organization



GFD RR
Global Facility for Disaster Reduction and Recovery



WORLD BANK GROUP
Social, Urban, Rural & Resilience

Tokyo
Development
Learning
Center

Indonesia Accomplishments Needed

1. Improved central government **capacity** to conduct risk assessments that include micro-zonation maps, and dealing with urbanization and remote islands
2. More innovative and alternative methods of **disaster financing and investment** on DRR.
3. Better **knowledge sharing and knowledge management** for disaster management and risk reduction, e.g., sharing stories, books, lessons learned
4. **Harmonization of Disaster Management Master Plan** regulation (forthcoming) and building regulations (existing), as well as other related actions and regulations (e.g., Sendai Framework, Climate Change Agreement, SDGs, etc.).
5. Improve the **capacity of local government agencies**, particularly in conducting risk assessments to prepare disaster risk management action plan and M&E plan.
6. **Increase awareness** through education, public communication, socialization to the public (e.g., building code regulations, operational procedures, drill simulations, community preparedness, community resilience).
7. **Improve collaboration and cooperation** with private sector, university/academia, and NGO stakeholders.

InaRISK Personal



INDONESIA RISK ASSESSMENT BOOK





Safe School Implementation In Indonesia





Safe School Implementation In Indonesia



Indonesia Actions to be Taken

SEISMIC HAZARD AND SCHOOL LOCATIONS

• Short-term:

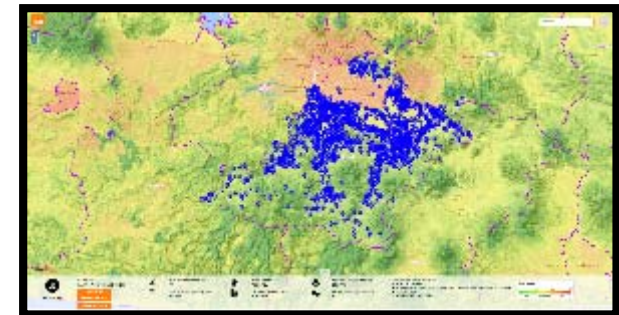
- Harmonize Disaster Management Master Plan regulation (forthcoming) and building regulations (existing), as well as other related actions and regulations (e.g., climate change, SDGs, etc.) by Bappenas/BNPB
- Identify champions and agents of change (e.g., government agencies, researchers) by Bappenas/BNPB
- Build capacity at local and central levels to identify analysis, prepare risk modeling, and conduct regulation/enforcement by MoHA/Bappenas/BNPB

• Medium-term:

- Review and improve methodology of disaster risk assessments (e.g., risk maps, risk-informed spatial planning, climate change, environmental safeguards); national standards of building and infrastructure regulations by Bappenas/PUPR/BNPB/BMKG/ATR/BG/universities/private sector
- Strengthen knowledge management of DRM practices – championing especially DRR (e.g., InaRISK, BNPB/BPBD knowledge hub)
- Strengthen capacity of local governments to implement and enforce building codes including building audits, monitoring and inspections by PUPR, private sector, NGOs and universities.

• Long-term:

- Identify options for effective disaster risk financing, insurance, and investment by Bappenas/MoF/PUPR
- Develop an effective EWS to communicate seismic risk information across Indonesia (need to increase number of monitoring stations and improve risk information and data dissemination) by BMKG/BNPB



Multi-Hazard Early Warning System (MHEWS)



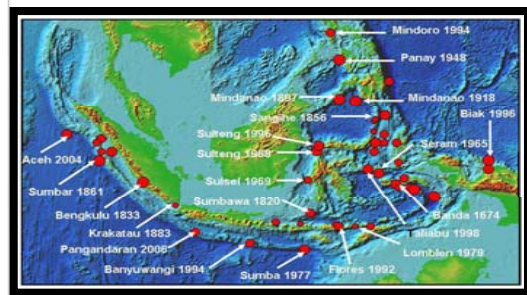
Barrier/Challenge of Implementation of Plan



GFDRR
Global Facility for Disaster Reduction and Recovery

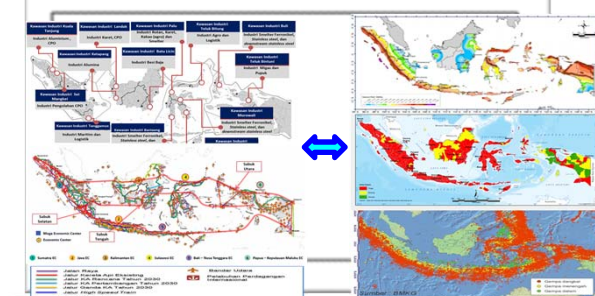
Tokyo
Development
Learning
Center

1. **Gaining supports** from the Parliament and Political Parties. Need more public discussion and consultation to mainstreaming law and regulation.
2. **Disseminating data and information equally and effectively** to the local governments particularly in the remote areas. Sharing information through InaRisk.
3. **Improving quality and priority on budgeting.** Eventhough Disaster Risk Management become one of the national priority program in the Annual Budget, but mostly focusing more on curative actions.
4. **Improving awaraness of the local communities** with diffeent sosical and culture. Need more communication, socialization and sharing information using.
5. **Convincing and involving actively private sectors** on the implementation of Disaster Risk Management. Need more sharing



ic

SEISMIC RISK IDENTIFICATION



GFDRR
Global Facility for Disaster Reduction and Recovery



WORLD BANK GROUP
Social, Urban, Rural & Resilience

Tokyo
Development
Learning
Center

Indonesia Support Needed



GFDRR
Global Facility for Disaster Reduction and Recovery

Tokyo
Development
Learning
Center

- **World Bank:**

- Technical assistance on the knowledge center on Disaster Management and Risk Reduction.
- Training/Course/Sharing Knowledge and Experience

- **TDLC Program**

- Technical Training for the National and Local Government staffs
- Improve the Methodology of Risk Assessment

- **Knowledge Products (Case Studies, Policy Notes, etc.)**

- Regulation on Building Code
- Success story of Disaster Risk Management



GFDRR
Global Facility for Disaster Reduction and Recovery



WORLD BANK GROUP
Social, Urban, Rural & Resilience

Tokyo
Development
Learning
Center

International Standards



GFDRR
Global Facility for Disaster Reduction and Recovery

Tokyo
Development
Learning
Center

1. **ISO 22327 (Landslide Early Warning System)** was Enacted in Sydney, 15 March 2018.
2. Proposed a series of Standards for Specific Hazards e.g. **Flooding, Volcanic Eruption and Tsunami** (ISO/TC 292 Next Meeting Plenary in Norway)



GFDRR
Global Facility for Disaster Reduction and Recovery



WORLD BANK GROUP
Social, Urban, Rural & Resilience

Tokyo
Development
Learning
Center



Terima Kasih
Domo Arigato Gozaimasu
Thank You



HAKONE IKIMASHOO



GFDRR
Global Facility for Disaster Reduction and Recovery

**Tokyo
Development
Learning
Center**



GFDRR
Global Facility for Disaster Reduction and Recovery



WORLD BANK GROUP
Social, Urban, Rural & Resilience

**Tokyo
Development
Learning
Center**

