



WORLD BANK WEBINAR

Smart Cities Indicators: How to make them practical & relevant for developing cities?

Main Findings from the 3rd edition of
*2022 Smart Cities Index Report:
Analysis of 31 Cities*

15th Dec., 2022

Jung Hoon LEE, Ph.D.

Project Manager, Global Smart Cities Index Report Project
Director of the Center for DT Technology Management & ISi Lab
Professor of Technology & Innovation Management, GSI
Visiting Academic Fellow, the Center for Technology Management (20/21)
E-mail: jhoonlee@yonsei.ac.kr



YONSEI
UNIVERSITY



UNIVERSITY OF
CAMBRIDGE
Department of Engineering



IfM Engage



Information Systems
Intelligence



About Speaker



JUNGHOON / LEE

Professional & Advisory Positions

- Professor of Technology & Innovation Management, Graduate School of Information, Yonsei University
- Program Chair for IoT Services Convergence Track, Graduate School of Information, Yonsei University
- Director of the Center for DT (Digital Transformation) Technology Management Center, ICONS, Yonsei University
- Director of Information Systems Intelligence Lab, Graduate School of Information, Yonsei University
- Member of the National Smart Cities Committee, Ministry of Land Infra. and Transport, Republic of Korea
- Chairman(2019-2021)/Member of the Smart Cities Committee of Seoul Metropolitan Government, Republic of Korea
- Member of the Public Data Strategy Working Committee, Ministry of Interior & Safety, Republic of Korea
- Chairman of the Special Committee on the Openness and Utilization of Public Data, Ministry of Interior & Safety, Republic of Korea
- Member of the National Data Policy Strategy & Working Committee, the Prime Minister's Office, Republic of Korea

Academic Qualifications

- Institute for Manufacturing, University of Cambridge, U.K.
Ph.D. in Manufacturing Engineering and Management (IS)
- London School of Economics, University of London, U.K.
M.Sc. in Analysis, Design and Management of Information Systems
- University of Manchester, U.K. / M.Sc. in Information Systems Engineering
- University of Manchester, U.K. / B.Eng. in Electronic Engineering

Industry Experiences

- Visiting Academic Fellow, Center for Technology Management, IfM, University of Cambridge, U.K.
- Visiting Professor, Graduate School of Business, Stanford University, U.S.A.
- Entrue Consulting Partners, LG CNS CO., Ltd, LG Group, Korea (Senior Business Consultant/Senior Research Fellow)
- LG-EDS Systems Inc, Korea Manufacturing and Logistics Consultant

Academic Accomplishment [Major Papers - Published in a total of 95 Journals/Conferences]

Lee, Y-J & Lee J-H (2016) "Knowledge workers' ambidexterity: conceptual separation of competencies and behavioral dispositions", Asian Journal of Technology Innovation, Vol.24, No1. pp.1-22

Hu, MC,Wu, CY, Lee, JH Lu, YC (2014) "The influence of knowledge source and ambidexterity in the thin film transistor and liquid crystal display industry: evidence from Japan, Korea, and Taiwan", Scientometrics, Vol. 99, pp.233-260 [SSCI]

Lee, J-H, Hancock, M-G, Hu, M-C (2014) "Towards an effective framework for building smart cities: Lessons from Seoul and San Francisco", Technological Forecasting and Social Change, Vol. 89, pp.80-99. [SSCI, Most cited articles in TFS ranked 7th]

Lee, J-H, Phaal, R., Lee, S-H (2013) "An integrated service-device-technology roadmap for smart city development", Technological Forecasting and Social Change, Vol.80, pp.286-306. [SSCI, Most cited articles in TFS, ranked 6th]

Major Bibliography

『Strategic Management of Technology and Technology Innovation』

『R&D Management』

『Entrepreneurship and Innovation』

『ITS in Asia』



Urban & Social Problems + ICT Convergence

→ Smart City

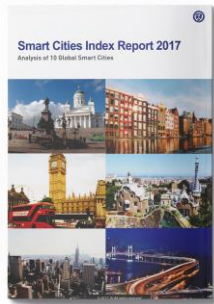
“Smart City is an regional innovation platform or system in which collectively discovers & develops new growth power in order to deal with urban issues with citizens, city officials, private companies etc. through intelligent & efficient management of environment, energy, urban infrastructure, & buildings using advanced ICT.” (J-H LEE, 2015 Smart City World Congress)



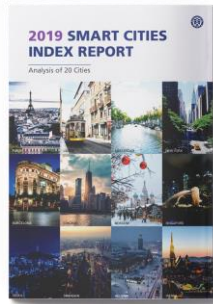
2022 Smart Cities Index Report

Smart Cities Index Report on 8 measurement dimensions based on 31 cities around the globe.

Smart Cities Index Report: **3rd Edition**



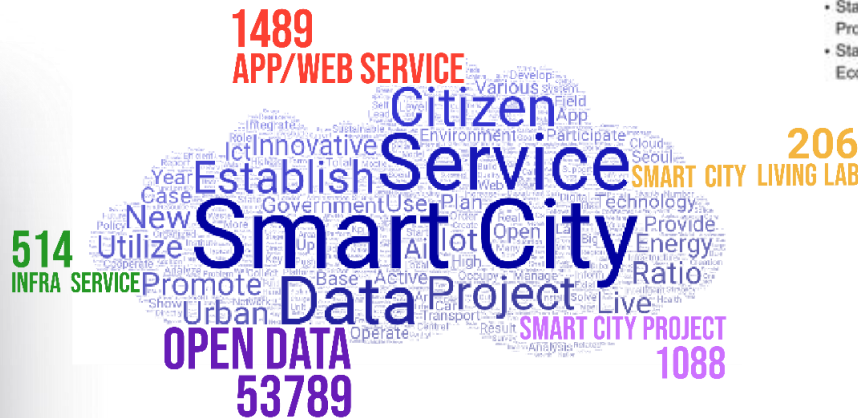
2017



2019



2021/2022

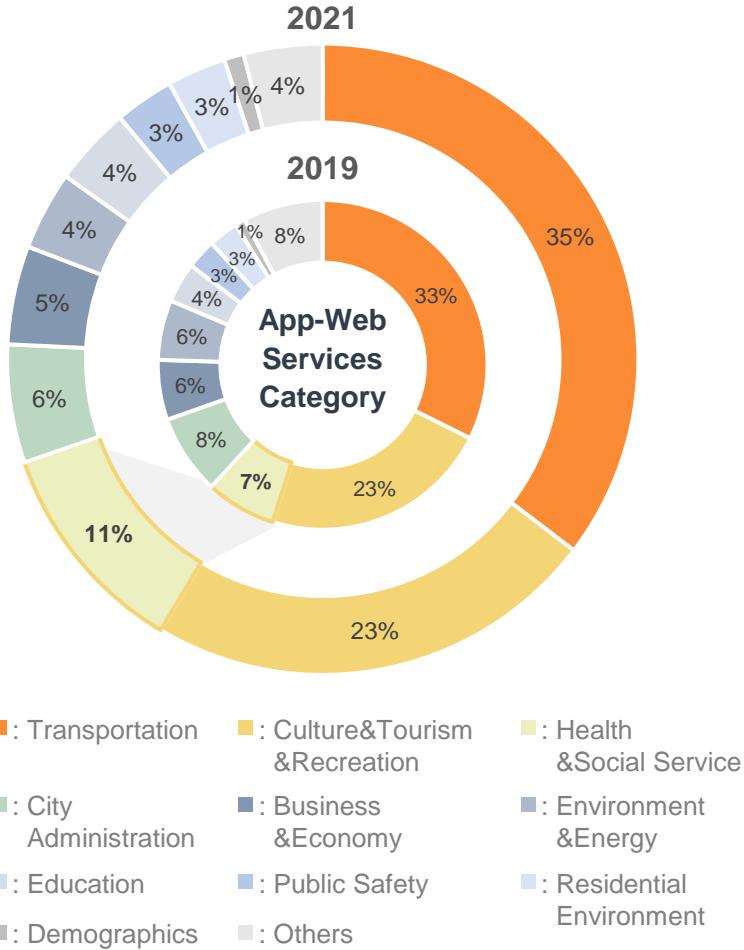


Performance Measurement Dimensions



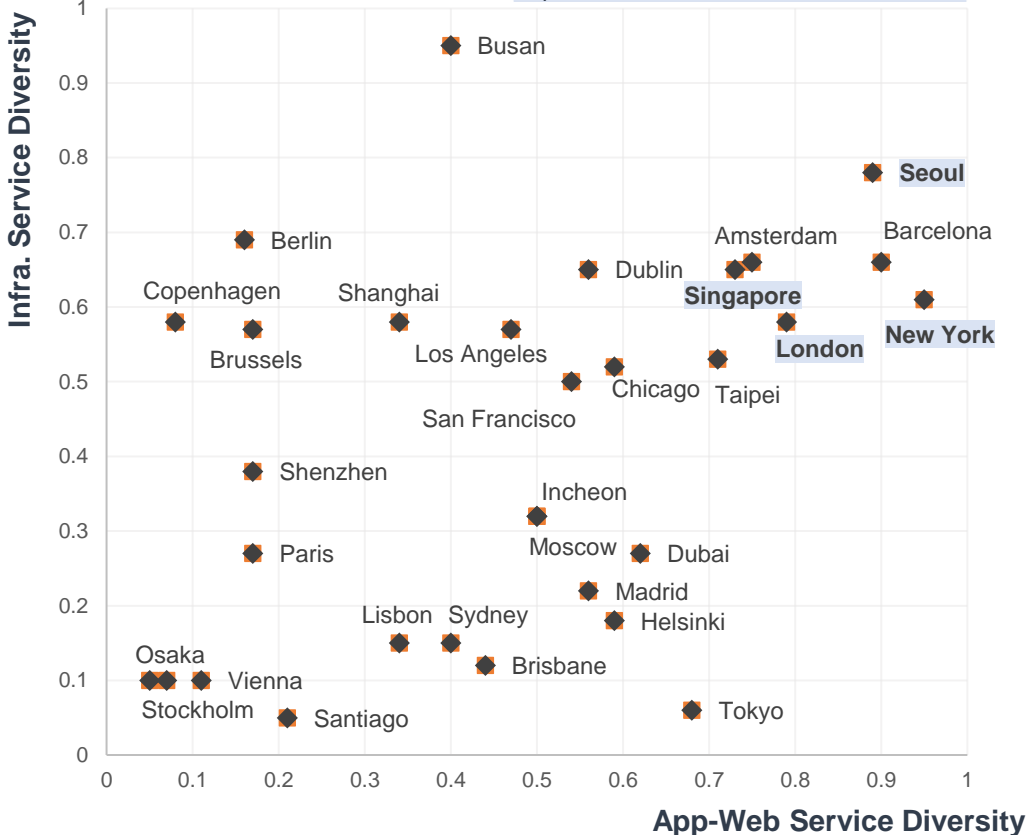
Key Findings: Service Innovation

Innovative Services & Projects Fuel Economic Recovery



Sample : 993 App-Web Services(2019), 1,489 App-Web Services(2021)

Degree of Diversity on App-Web and Infra. Service Categories
Top 4 Cities on Service Innovation in 2019



Sample : 1,489 App-web Service, 514 Infra-based Service

Digital Innovation

Seoul

<CLOVA Carecall>

Emerging Industry Services

New York

Active Passes(2)

COVID-19 Vaccination Excelsior Pass Plus

Jane McDowell

D.O.B.

<NYS Excelsior Pass Scanner>

Healthcare & Social Services

Barcelona

FARMA GUIA

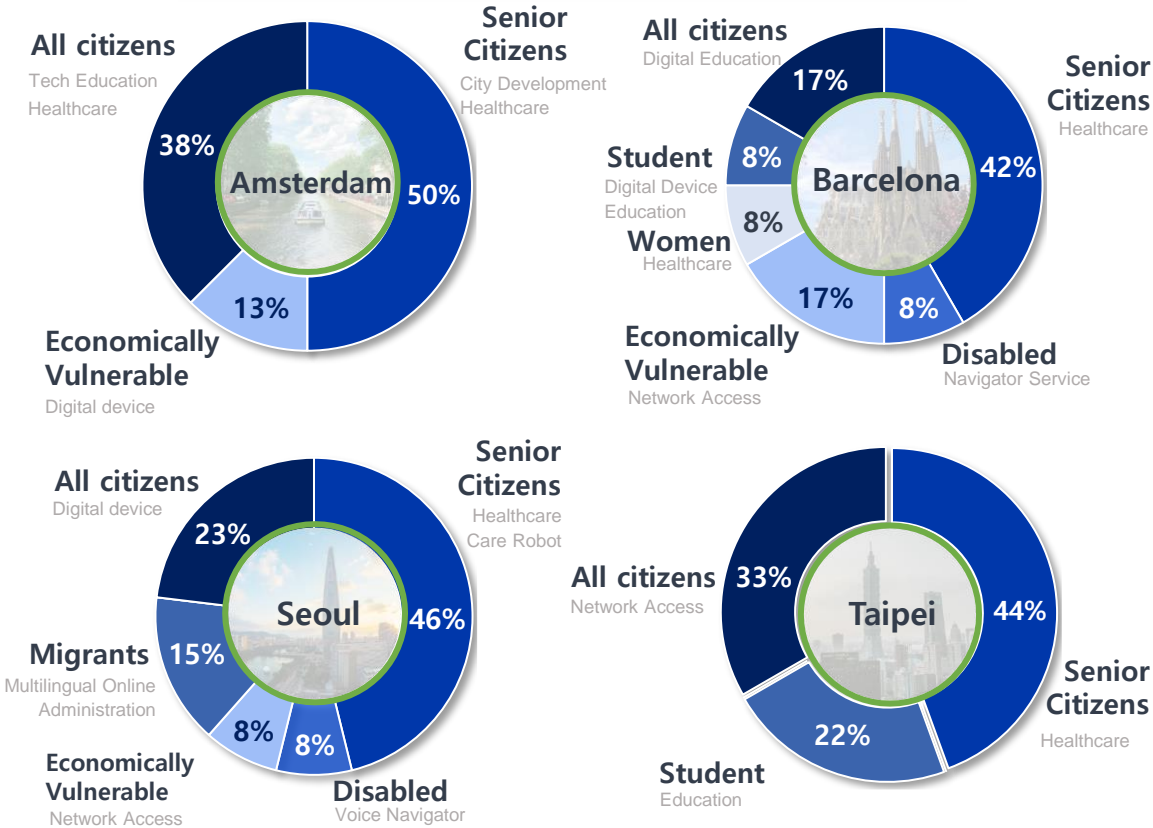
<Farmaguia>

Key Findings: Service Innovation

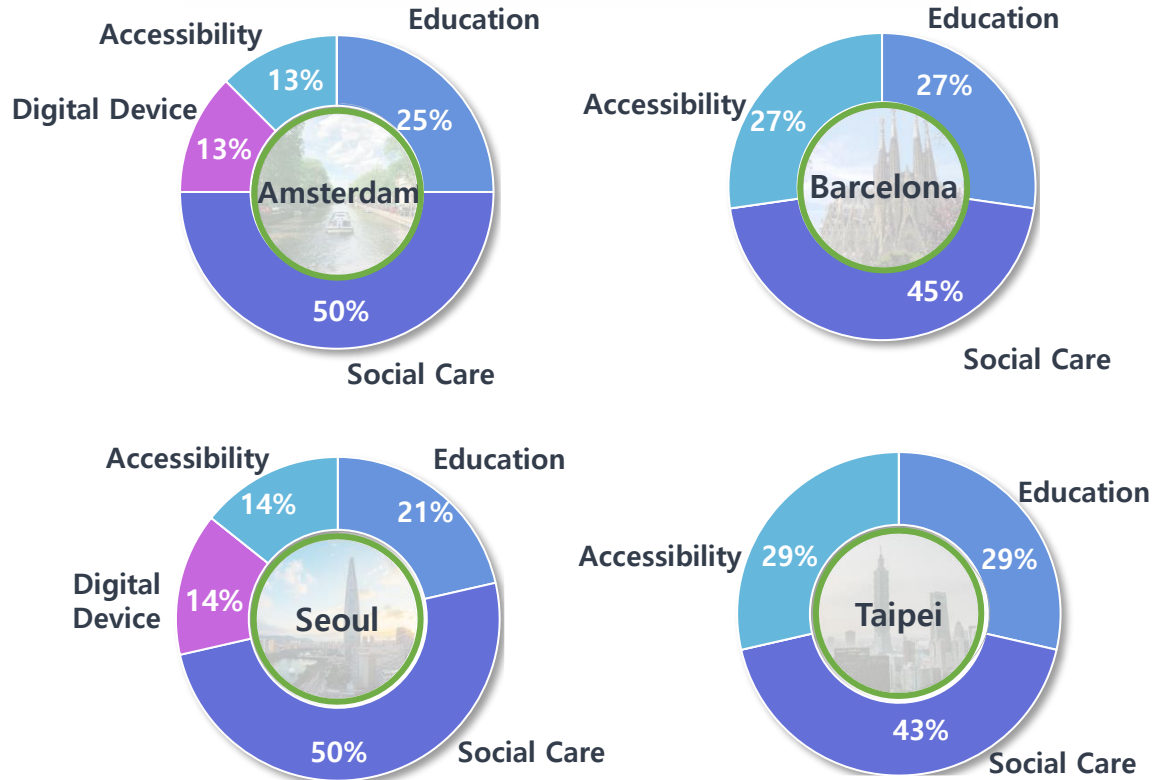
Citizen centric Digital Inclusion

“ Inclusive Digital Transformation through Citizen-centric Smart City ”

Subjects of the Digital Inclusion Services



Types of Digital Inclusion Services

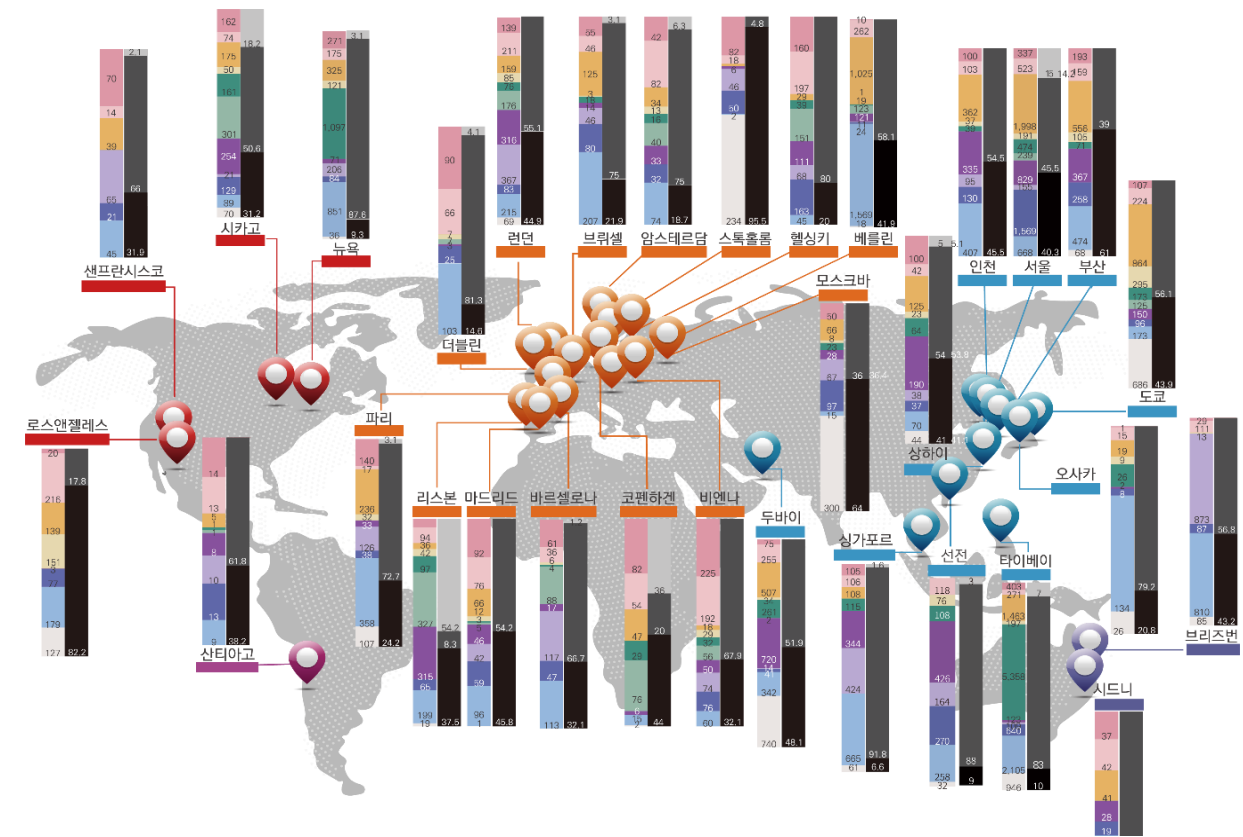
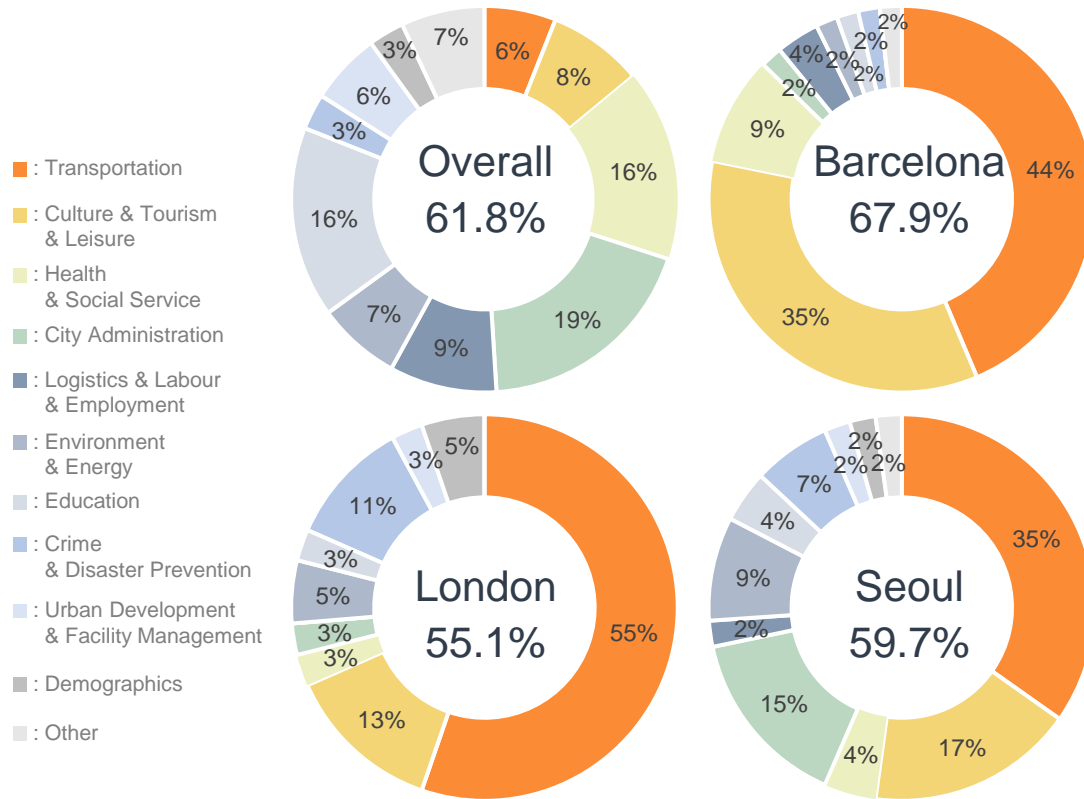


Key Findings: Urban Openness

Urban openness, the driving force of innovation and an important factor to determine the competitiveness of a city, provides an activity-friendly environment for talents in the development of smart city services

- ▶ Taipei, Seoul, New York etc. lead on Urban Open Data
- ▶ Average Public Data Utilization Rate: 61.8%

Singapore, Sydney, New York, Taipei are leading cities on Public Data Utilization [Over 90%] ▼



Source: 31 Cities, 52,337 Data Sets

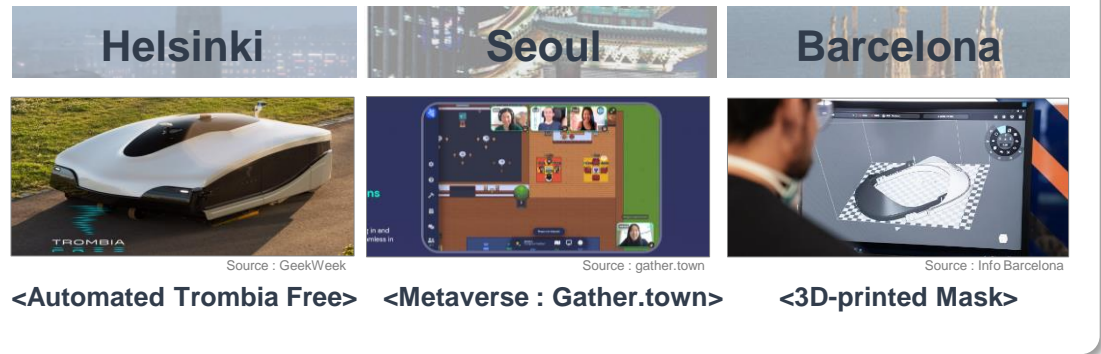
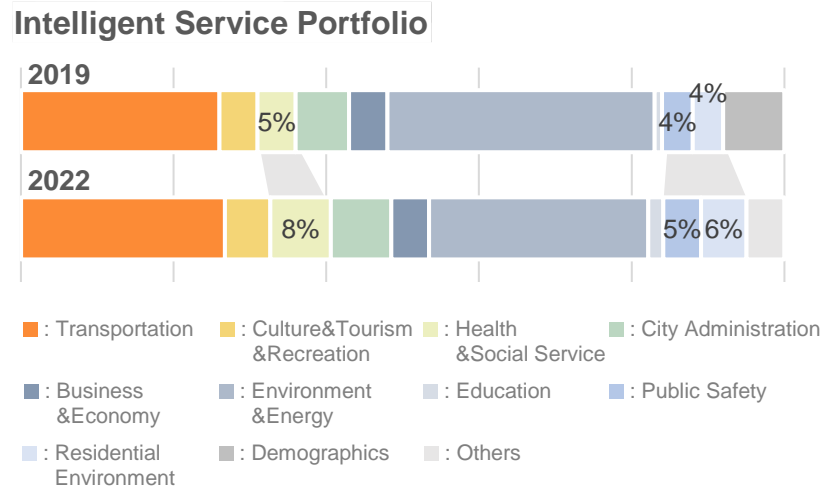
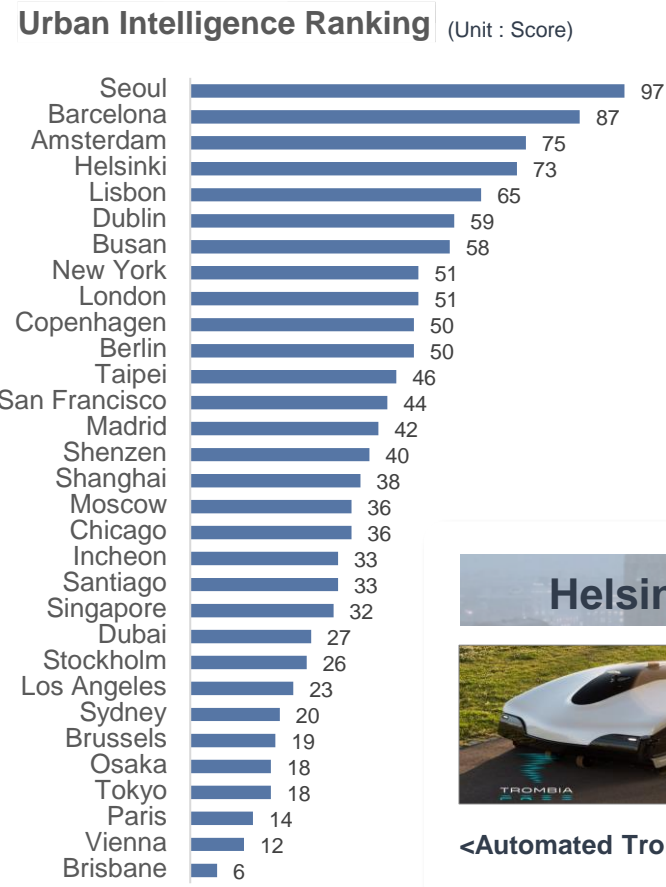
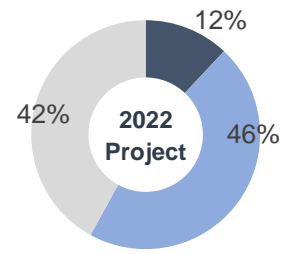
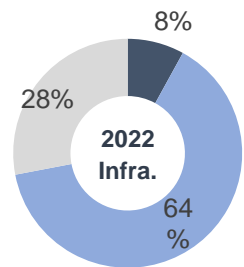
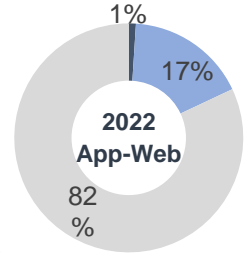
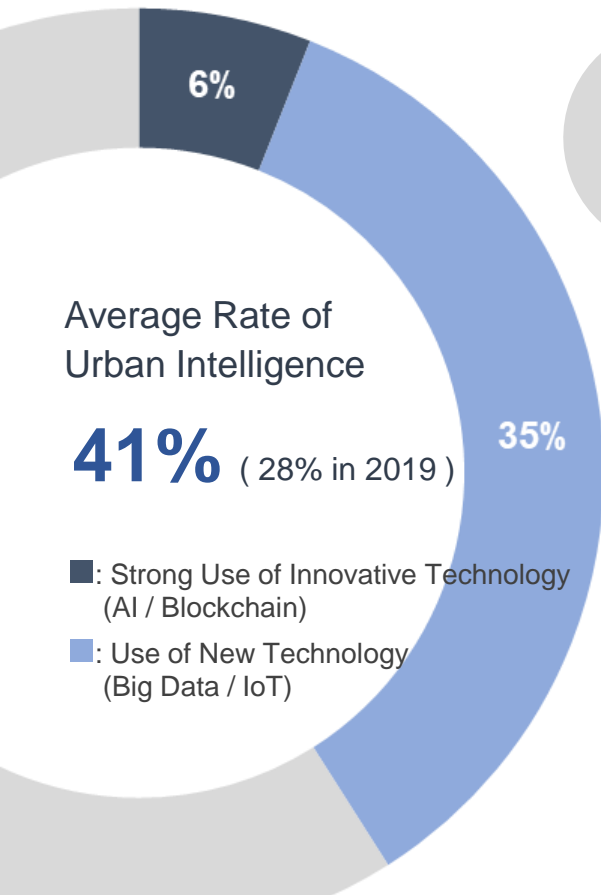
Source: 2022 Smart Cities Index Report

Key Findings: Urban Intelligence

Urban Intelligence rate has grown 13%p with more broad service portfolio

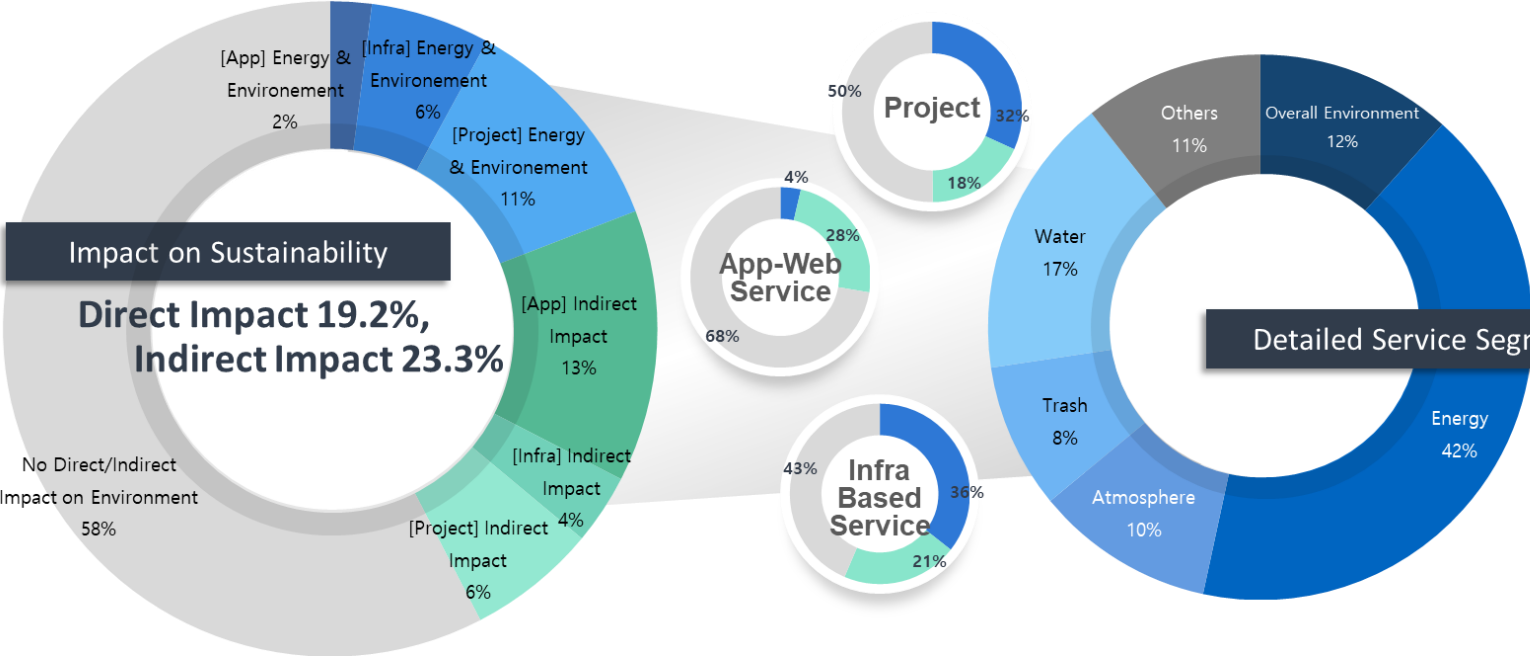
Cities are getting *MORE INTELLIGENT*

Sample : 1,628 Service/Infrastructure/Project (2019)
3,090 Service/Infrastructure/Project (2022)

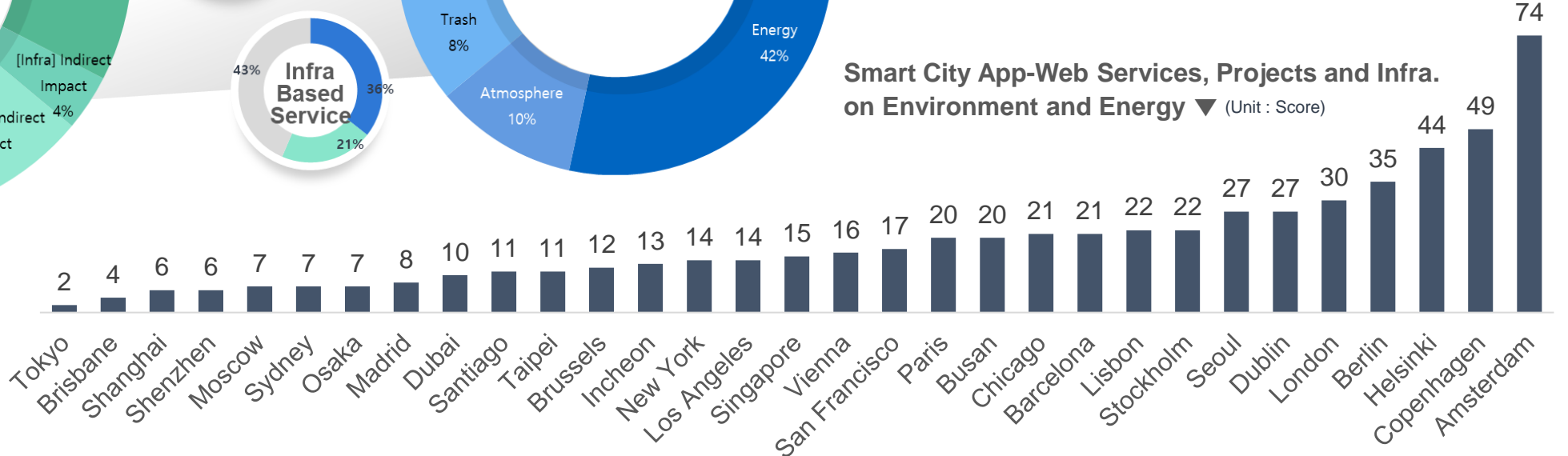


Key Findings: Urban Sustainability

Sustainable Growth is the Main Concern of Smart Cities



Smart City App-Web Services, Projects and Infra. on Environment and Energy (Unit: Score)



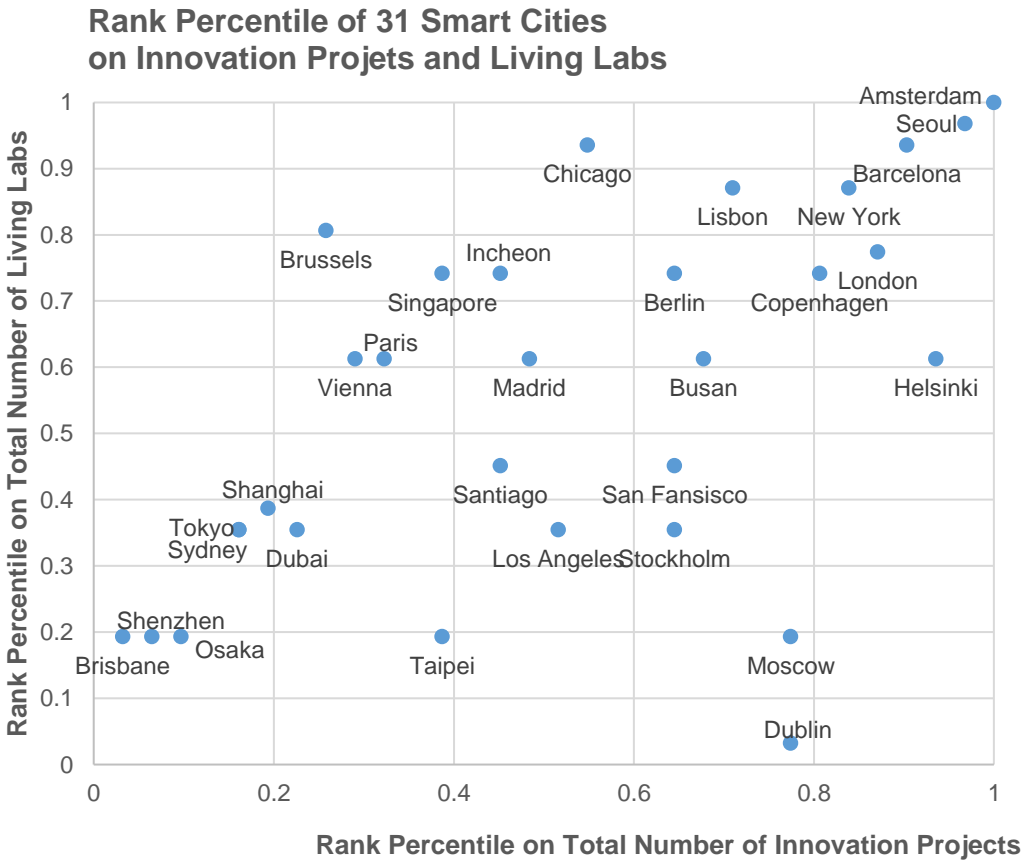
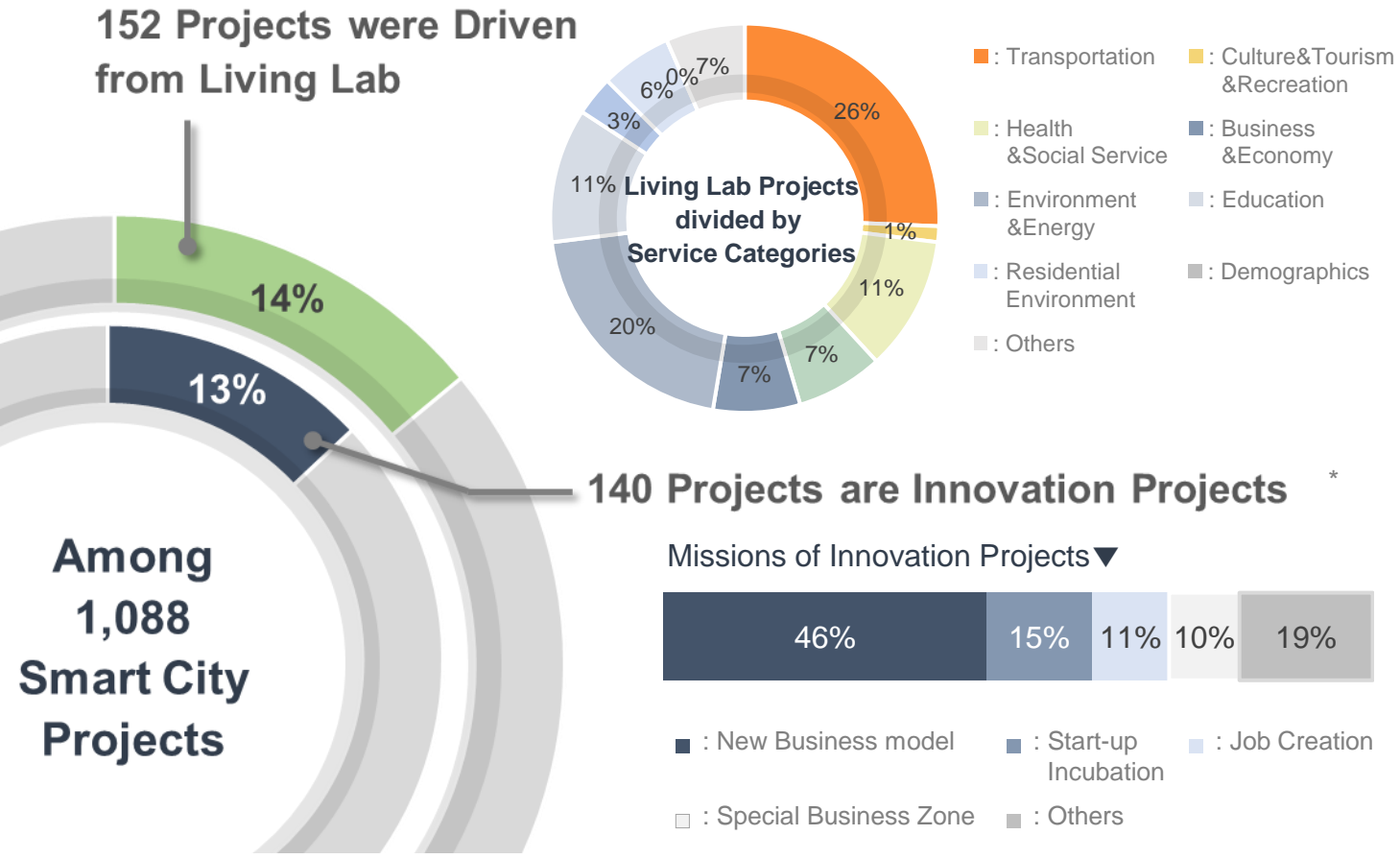
Sample : 1,489 App-web Service, 514 Infra-based Service, 1,088 Project

- : Direct Impact
- : Indirect Impact
- : No Impact

Key Findings: Urban Innovation

Innovative projects are breakthrough for protracted economic depression while Cities are deriving creative solutions on city issues through citizen-engaged Living Labs.

Living Lab Driven or Innovative Smart City Projects



Key Findings: Infrastructure Integration

Smart city infra, which is an aggregation of 4th industrial innovation technologies, is the basic infrastructure for ICT to be serviced on a platform of a city

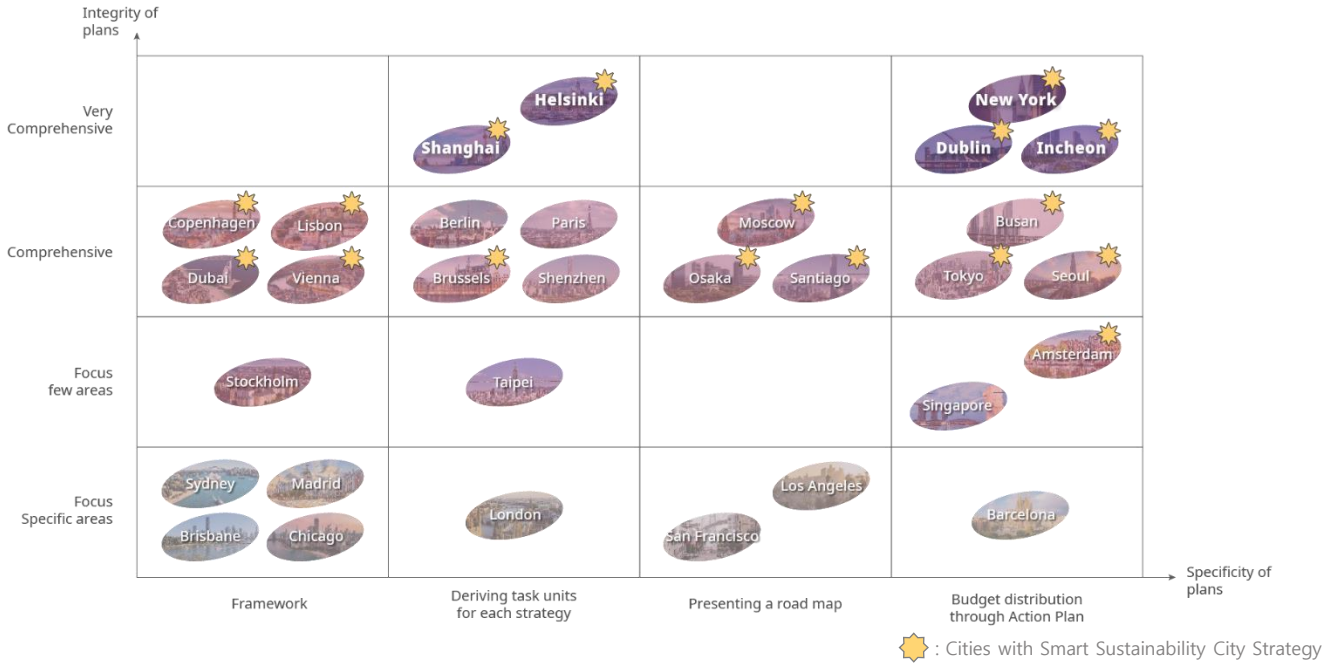
Rader Chart for the 6 Elements that Make up the Digital Infrastructure of Smart Cities



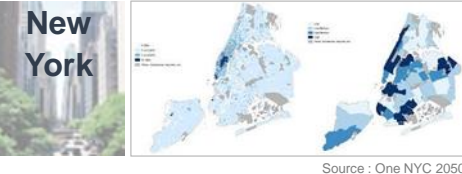
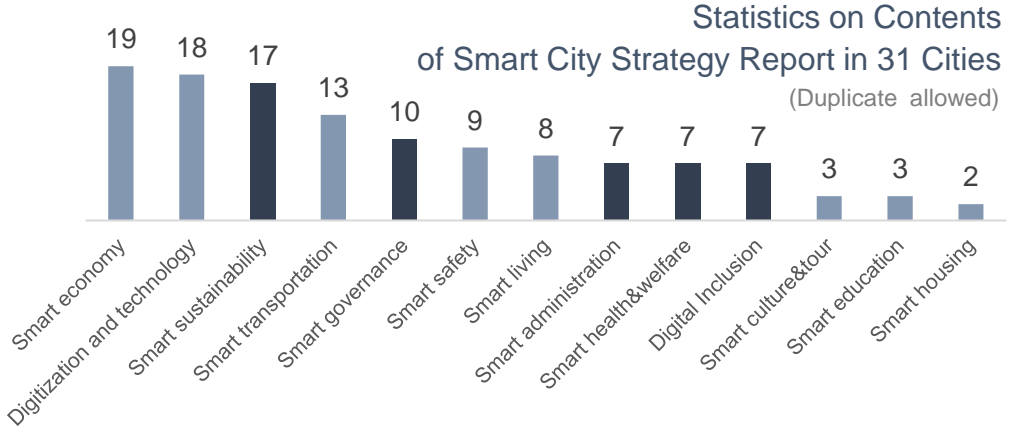
Key Findings: Smart City Governance

17 cities included strategic initiatives of 'Smart Sustainability' while 'Vienna', 'Dubai' and 'Singapore' are leading SDGs based Smart City Strategy.

Integrity and Concreteness of Global Smart City Strategies



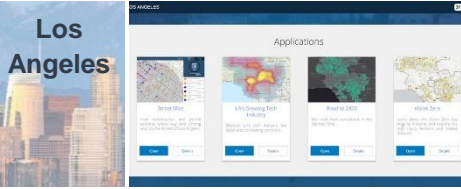
Governance for Citizen Participation & Social Equity



Internet Master Plan for Universal Broadband

- A \$157 million initiative which will expand low-cost or no-cost Internet access to every New Yorkers

Source : One NYC 2050



GeoHub

- Citizen-participating city administration tool with location-based data support efficient urban operation

Source : Esri



Digital Equity Strategy

- Strategies on improving access to internet, promoting digital literacy, and achieving sustainable, meaningful impact for underserved citizens

Source : Digital Equity Strategic Plan 2019-2024

CONCLUSION



Test Bed for Energy & Env. Innovation

26% of Smart Cities have Innovation Specific District

61% of Smart Cities are maintaining or advancing their Living Labs

Core Unit of Intelligence

Average rate of urban intelligence has increased 13%p

48% of Smart Cities have advanced Open Data Portal

Cradle for Social Inclusion

42% of Smart Cities have initiatives on digital inclusion or smart health & welfare

39% of Smart Cities have advanced Public Free WiFi area

IfM Engage Course Introduction

Smart Cities: Strategic planning and strategy implementation

➤ Why IfM Engage Course?

- An overview of how a smart city vision and strategy can be defined.
- Introduction of key concepts and practice examples of a smart city.
- Insight about tools and techniques for strategic planning and measuring the success of the strategy implementation
- Learn methods that favour a fast start and agile implementation in order to achieve quick results, and benefit from exchanging experiences and lessons with delegates from other cities and countries.

➤ Who should attend?

- Mayors, city authorities and councillors
- Ministers and policy makers
- Public and private sector professionals involved in urban planning and development

➤ Register at:

<https://engage.ifm.eng.cam.ac.uk/project/smart-cities-course/>

- Smart city trends and drivers
- Case studies and global good practices in smart cities
- Identifying stakeholder needs
- Defining a smart city vision and strategy
- How can new technologies improve strategic planning and deliver on it
- Identifying, prioritising and selecting new initiatives
- Measuring the success of the strategy
- Conducting a multi-stakeholder approach
- Design-thinking approaches to co-creation with citizens

All sessions will be live online meeting with application of interactive tools.





THANK YOU
2022 Smart City Index Report
Available at

www.smartcitiesindex.org

