



**Câmara  
Metropolitana  
de Integração  
Governamental**

# **SIMRIO**

**GRUPO EXECUTIVO DE  
GESTÃO METROPOLITANA**



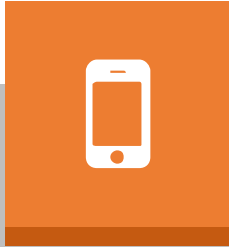
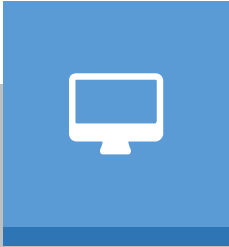
# ABOUT US

Chamber created to promote integration among the 21 cities in the metropolitan region and the state, generating discussions about the developed urban policies, and propose solutions to important issues and common to all cities.



# SIMRio

*CONCEPTION*



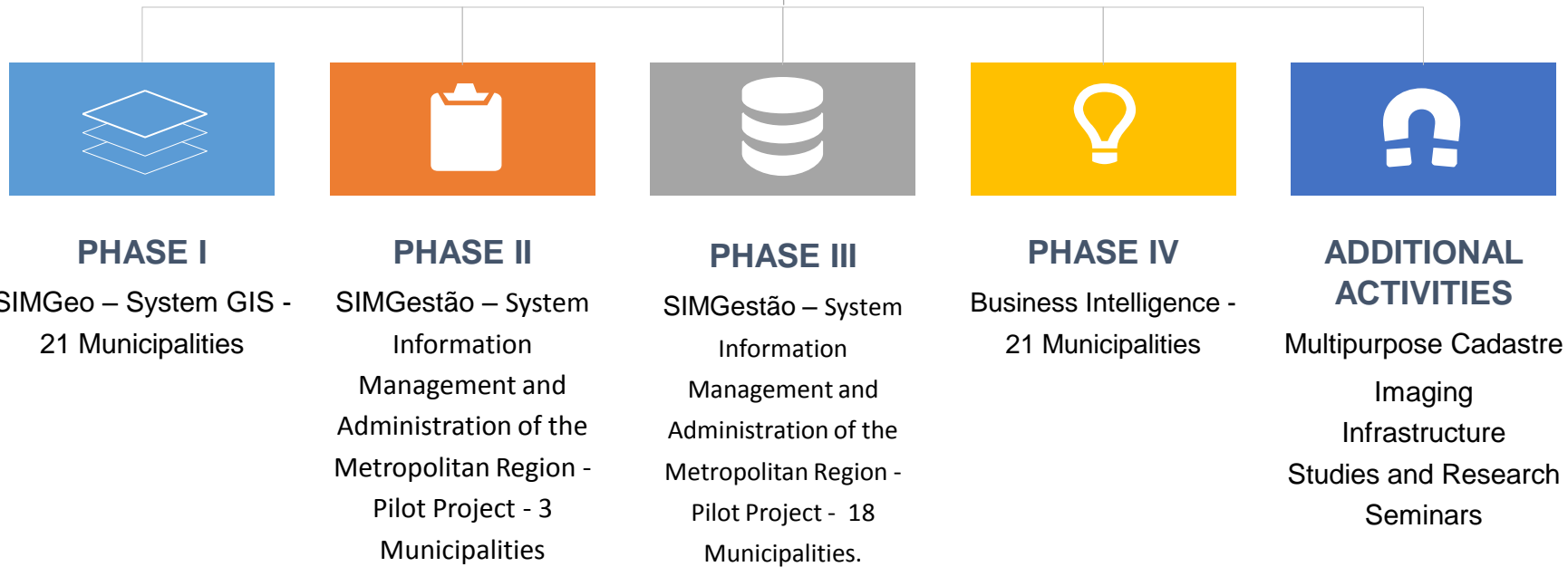
# PROPOSAL



Development of Municipal Information Systems, to be made available by the State to the municipalities in the metropolitan region of Rio de Janeiro and Metropolitan Information System, which will aggregate into a single module information of 21 municipal systems in an integrated manner.

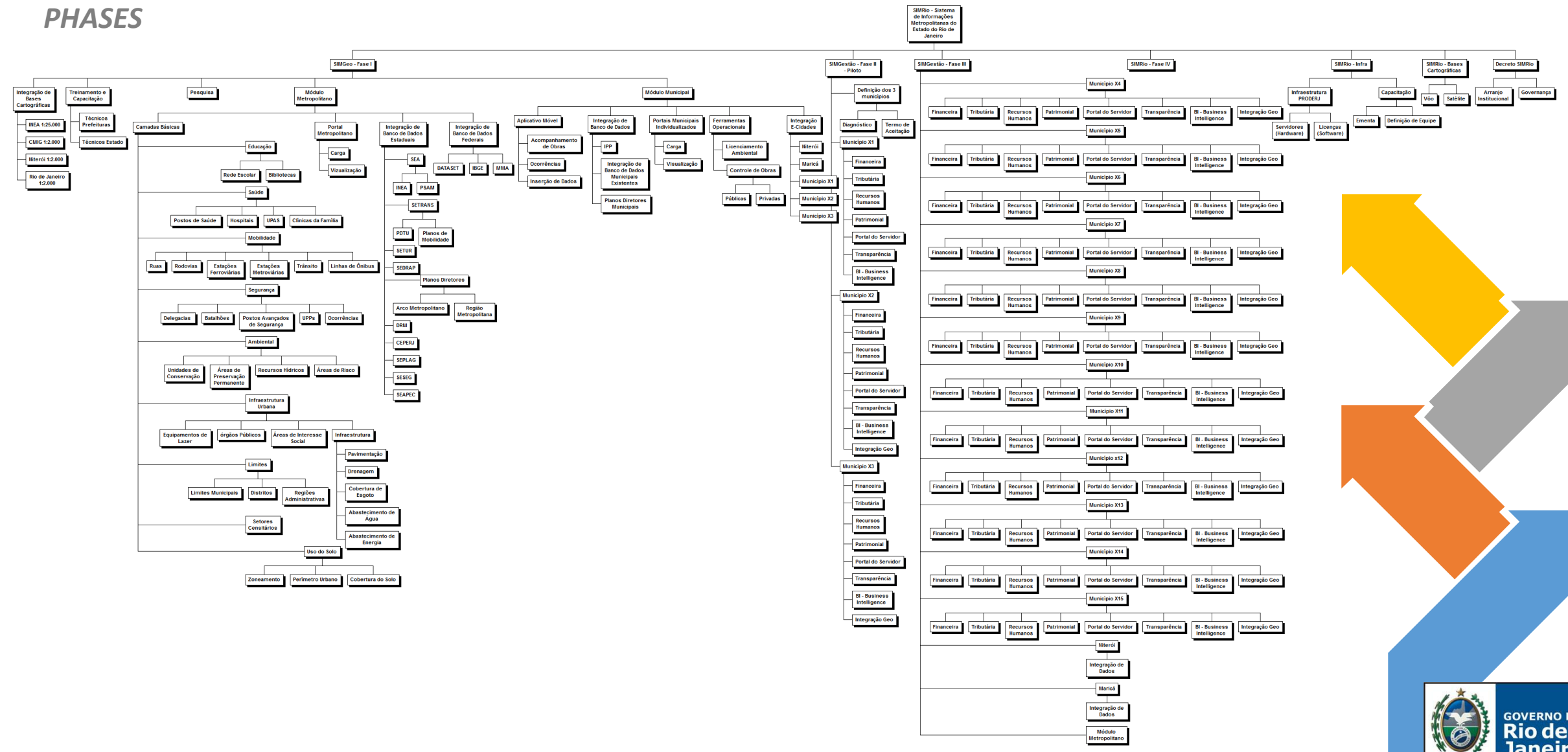
# SIMRio

PHASES



# SIMRio

## PHASES



# SIMRio

SUSTAINABILITY



# SIMRio

INTELLIGENCE SYSTEM

BUSINESS INTELLIGENCE

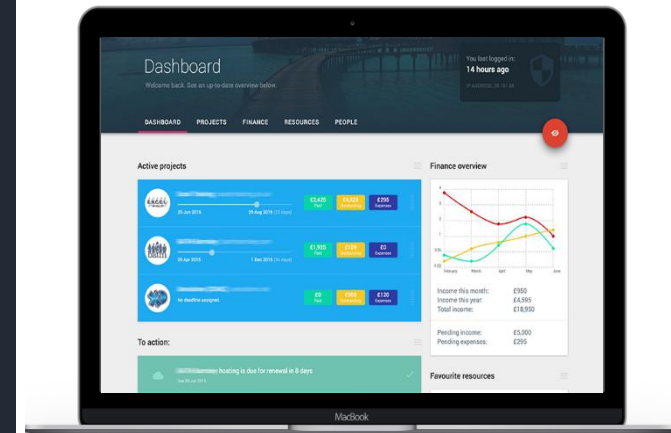
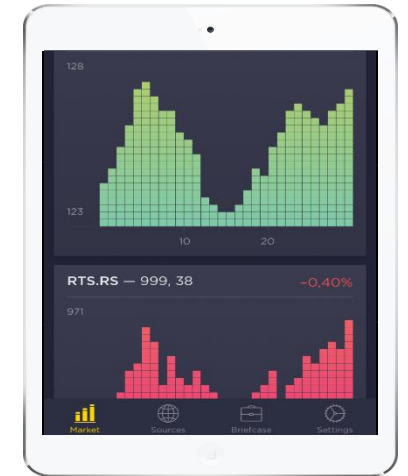
DASHBOARDS

PREDICTIVE ANALYSIS

BIG DATA



**Câmara  
Metropolitana  
de Integração  
Governamental**



# SIMRio

ADDITIONAL ACTIVITIES

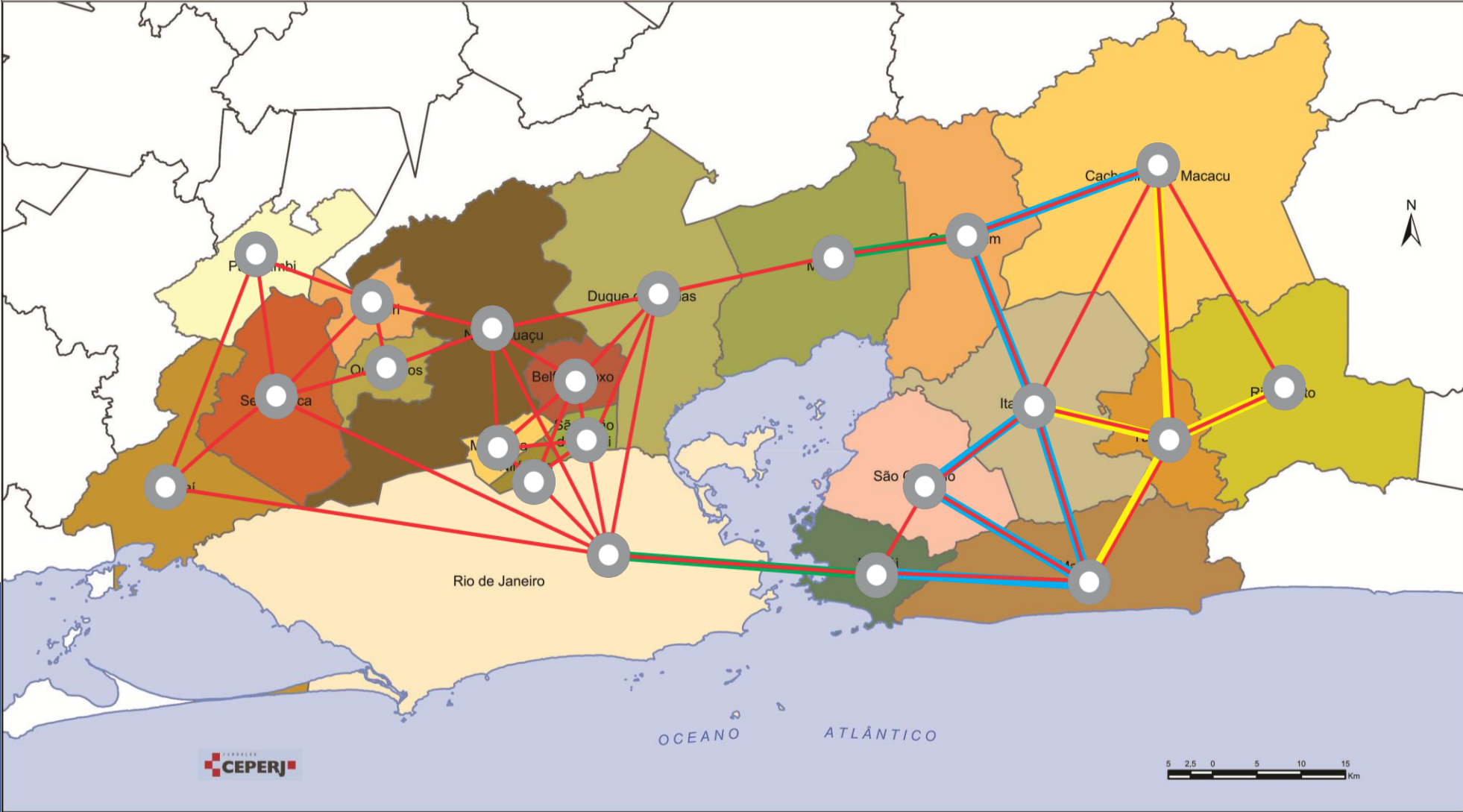
The screenshot shows a web browser window with the URL [www.simrio.rj.gov.br](http://www.simrio.rj.gov.br). The main content area features five interlocking gears, each representing a different activity:

- Updating the Multipurpose Register**: Represented by a blue gear with a map and a plus sign icon.
- Infrastructure**: Represented by an orange gear with a computer monitor icon.
- Cartography and Satellite Images**: Represented by a grey gear with a landscape photo icon.
- Research and Sector Projects**: Represented by a yellow gear with a document and checkmark icon.
- Seminars**: Represented by a blue gear with a group of people icon.



# SIMRio

*COLLABORATIVE ASSISTANCE NETWORK*



# SIMRio

*Deadlines and Costs*



**PHASE I**  
**US\$ 1,800,000.00**  
**16 months**



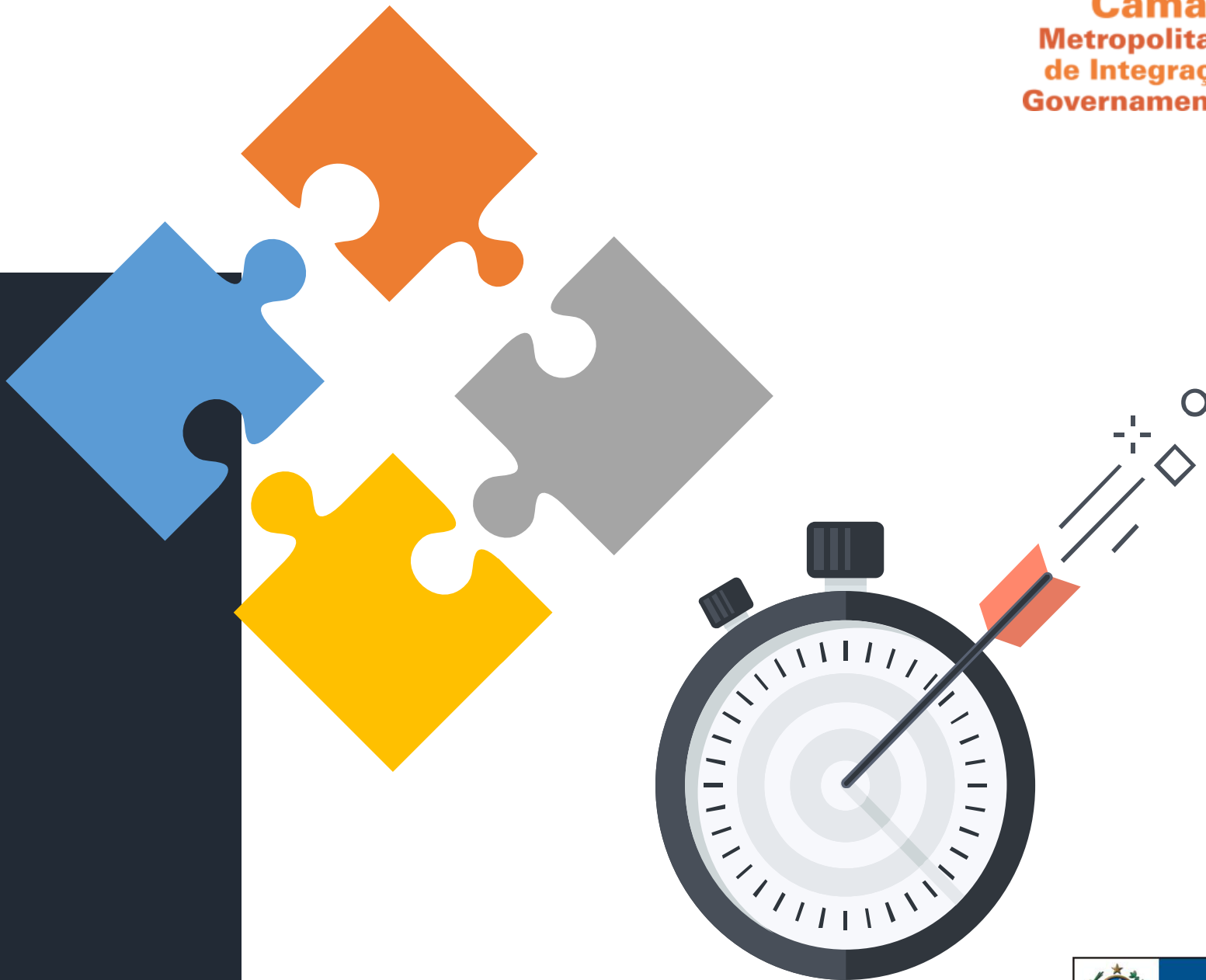
**PHASE II**  
**US\$ 1,000,000.00**  
**9 months**



**PHASE III**  
**US\$ 6,000,000.00**  
**12 months**



**PHASE IV**  
**US\$ 2,000,000.00**  
**3 months**



# SIMRio

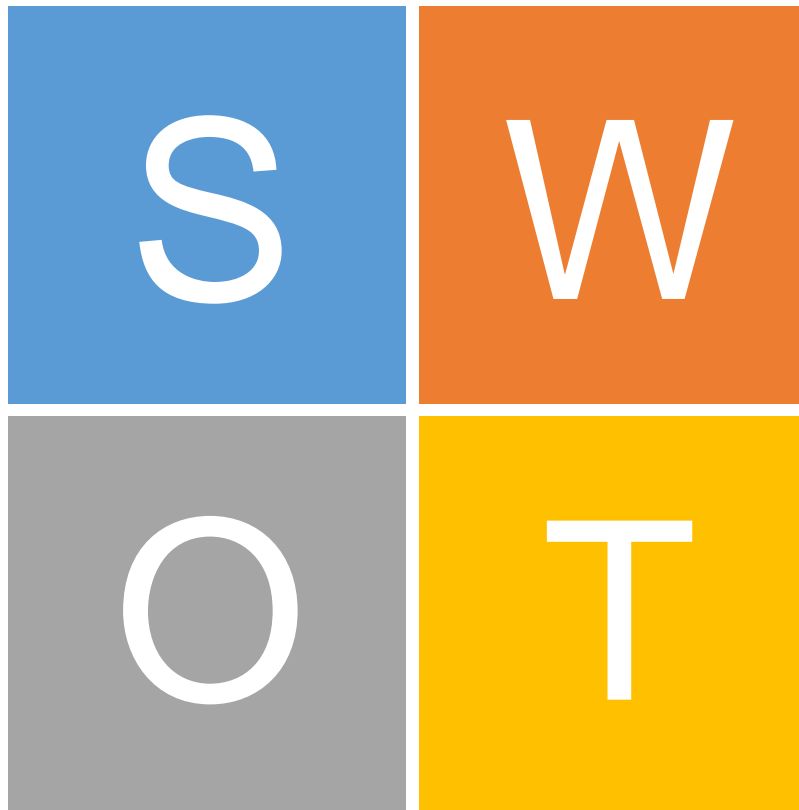
## SWOT ANALYSIS

### Strengths

1. New cartographic base
2. Top management support the project
3. Data processing center with installed capacity
4. University Centers specialize in GIS and spatial information

### Opportunities

1. Easy access to information
2. Capacity utilization
3. Innovation in the planning and management process.
4. Increased transparency



### Weaknesses

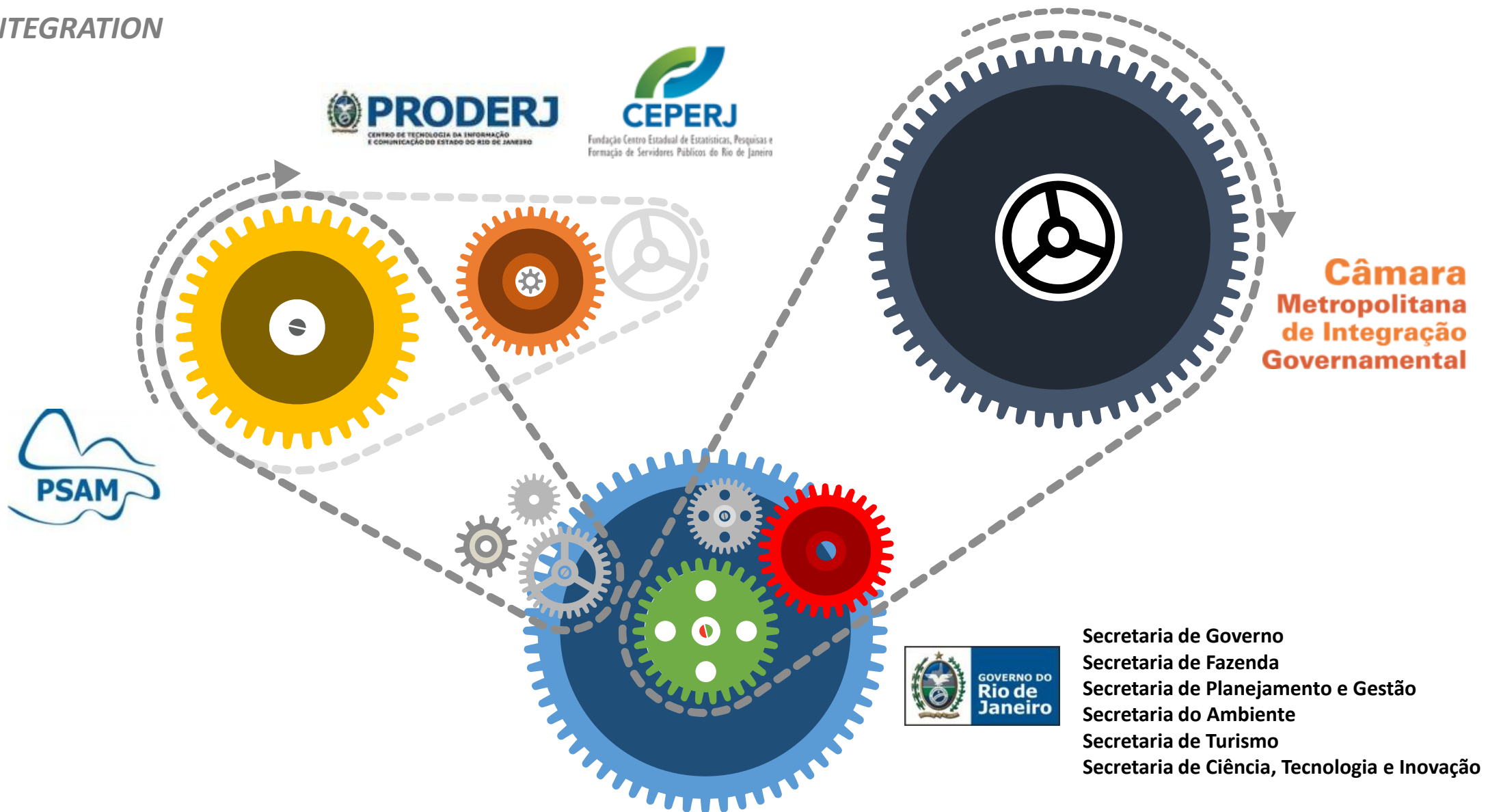
1. Software compatibility between the various systems already in place.
2. Lack of integration between departments and agencies.

### Threats

1. Hardware infrastructure
2. Political instability
3. Reluctance system utilization
4. Quality and accuracy of data and information
5. Operational expertise and staff turnover

# SIMRio

INTEGRATION



# THANK YOU FOR WATCHING

 **Contact Info**

Email: [clucia.metropolitano@segov.rj.gov.br](mailto:clucia.metropolitano@segov.rj.gov.br)  
Website: <http://www.camarametropolitana.rj.gov.br/>

 **Telephone**

Office Phone: +55 (21) 2333-0982

 **Address**

Rua Pinheiro Machado s/nº,  
Anexo Palácio Guanabara, 6º andar,  
Rio de Janeiro, RJ

